

TRANS LEVEL: BY ATC
TRANS ALT: 5000'

NÜRNBERG ATIS
123.07

NÜRNBERG Ground
118.10

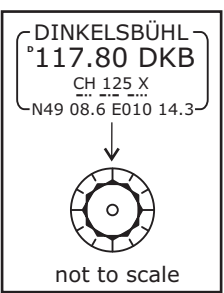
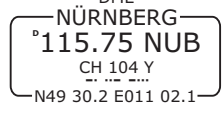
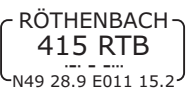
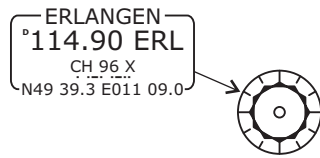
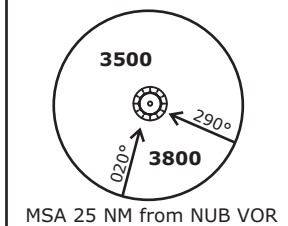
NÜRNBERG Tower
118.30

MÜNCHEN Radar
129.52

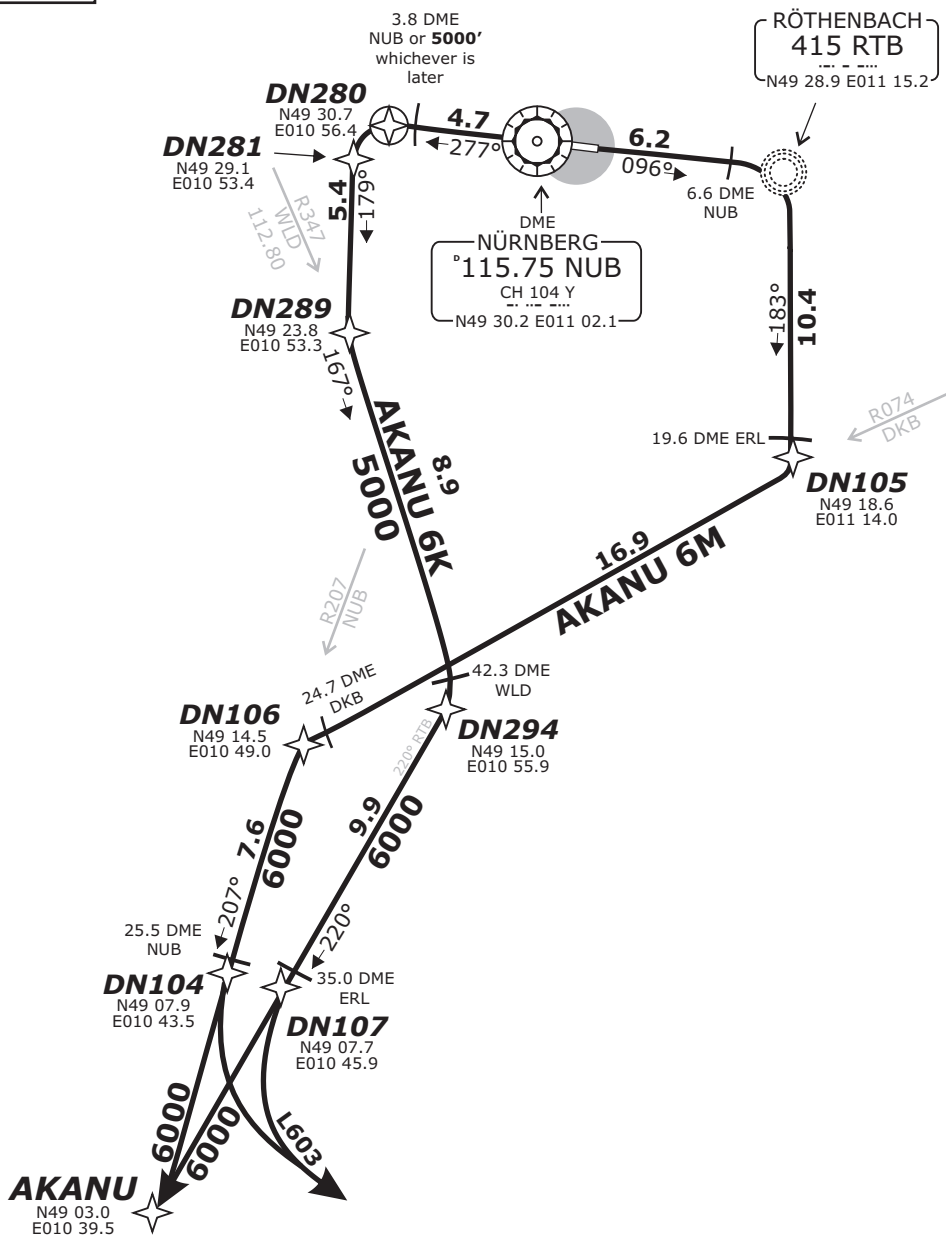
AKANU 6K - AKANU SIX KILO [AKAN6K] (34.9 NM)
AKANU 6M - AKANU SIX MIKE [AKAN6M] (40.9 NM)

SPEED RESTRICTION
MAX 250 KTS below FL100
or as by ATC.
Not applicable within airspace C.

BEARINGS AND TRACKS ARE MAGNETIC.
ALTITUDES IN FEET MSL



Do not use for real life navigation!



Contact München Radar immediately after take-off!

Initial climb clearance FL70.

SID	RWY	ROUTING	GPS/FMS RNAV	REMARKS
AKANU 6K	28	On R277 NUB to 3.8 DME NUB or 5000, whichever is later; LT on track 179° to intercept R347 WLD, on R347 WLD to 42.3 DME WLD, RT, on track 220° RTB to AKANU.	[A1500+] - DN280[A5000+;L] - DN281 - DN289[L] - DN294[R] - DN107 - AKANU.	1. Altitude restriction applies during glider activity. 2. Flights continuing on L603 commence LT when crossing 35.0 DME ERL.
AKANU 6M	10	On track 096° inbound RTB; at 6.6 DME NUB RT, on track 183° RTB to 19.6 DME ERL, RT, on R074 DKB to 24.7 DME DKB, LT, on R 207° NUB to AKANU.	[A1500+] - RTB[R] - DN105[R] - DN106[L] - DN104 - AKANU.	1. Flights continuing on L603 commence LT when crossing 25.5 DME NUB. 2. Transition to (U)L605 not possible. These flights shall file SID RODIS - (U)L604

TRANS LEVEL: BY ATC
TRANS ALT: 5000'

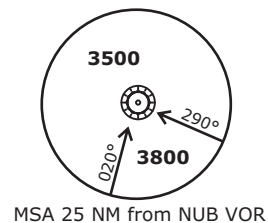
NÜRNBERG ATIS
123.07

NÜRNBERG Ground
118.10

NÜRNBERG Tower
118.30

MÜNCHEN Radar
129.52

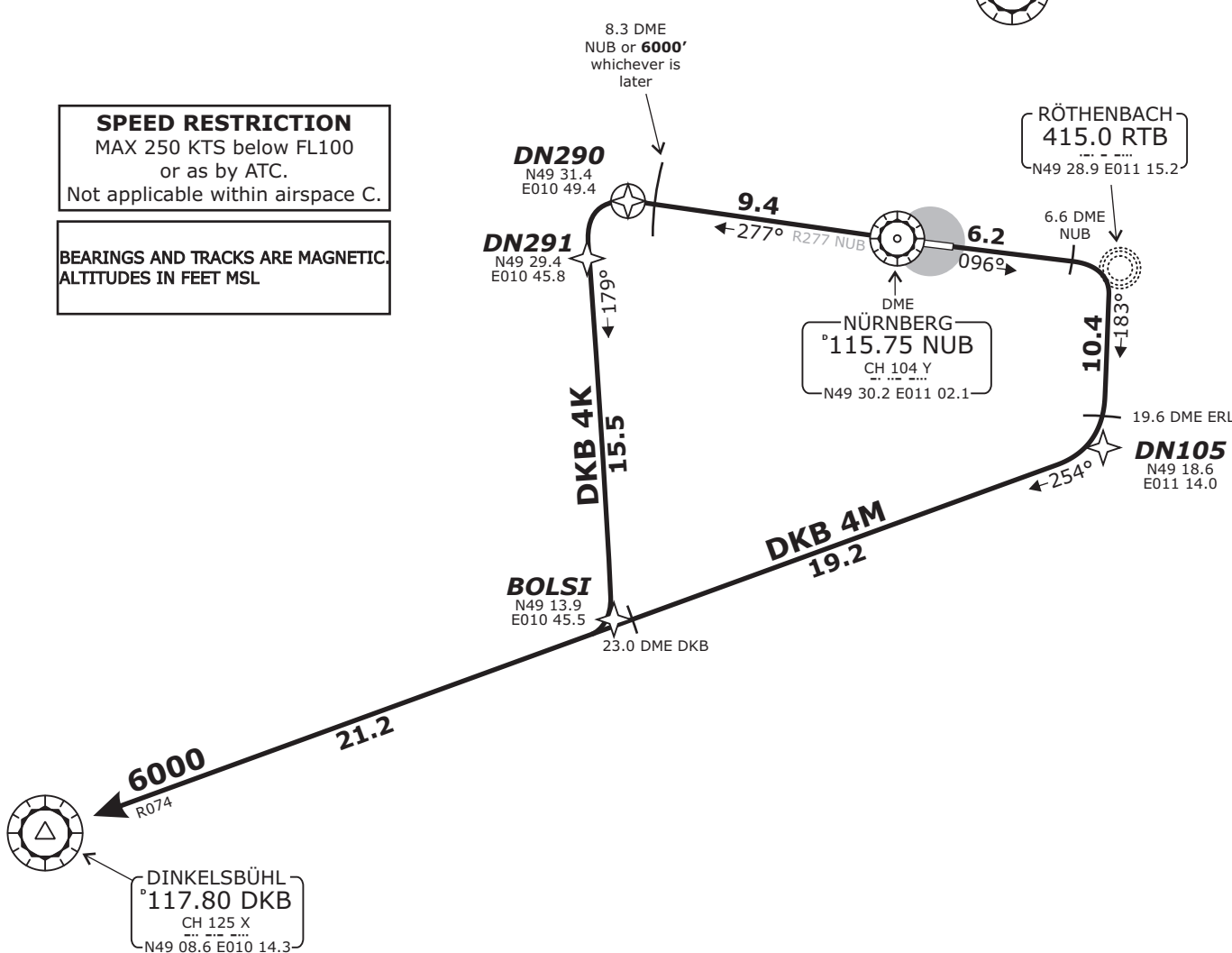
DKB 4K - DINKELSBÜHL FOUR KILO (40.4 NM)
DKB 4M - DINKELSBÜHL FOUR MIKE (57.0 NM)



ERLANGEN
°114.90 ERL
CH 96 X
N49 39.3 E011 09.0

SPEED RESTRICTION
MAX 250 KTS below FL100
or as by ATC.
Not applicable within airspace C.

BEARINGS AND TRACKS ARE MAGNETIC.
ALTITUDES IN FEET MSL



Do not use for real life navigation!

Contact München Radar immediately after take-off! **Initial climb clearance FL70.**

SID	RWY	ROUTING	GPS/FMS RNAV	REMARKS
DKB 4K	28	On R277 NUB to 8.3 DME NUB or 6000, whichever is later; LT, on on track 179° to BOLSI, RT, on track 254° to DKB.	[A1500+] - DN290 - [A6000+;L] - DN291 - BOLSI[R] - DKB.	1. Not available for flights to continue via T104 or Y161 2. After 8.3 DME NUB BRNAV equipment necessary
DKB 4M	10	On track 096° inbound RTB; at 6.6 DME NUB RT, on track 183° RTB to 19.6 DME ERL; RT, on R074 DKB to DKB.	[A1500+] - RTB[R] - DN105[R] - DKB.	Not available for flights to continue via T104 or Y161.

TRANS LEVEL: BY ATC
TRANS ALT: 5000'

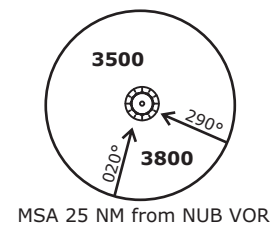
NÜRNBERG ATIS
123.07

NÜRNBERG Ground
118.10

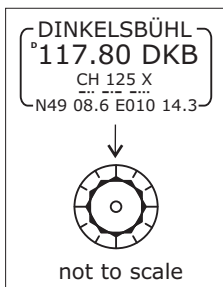
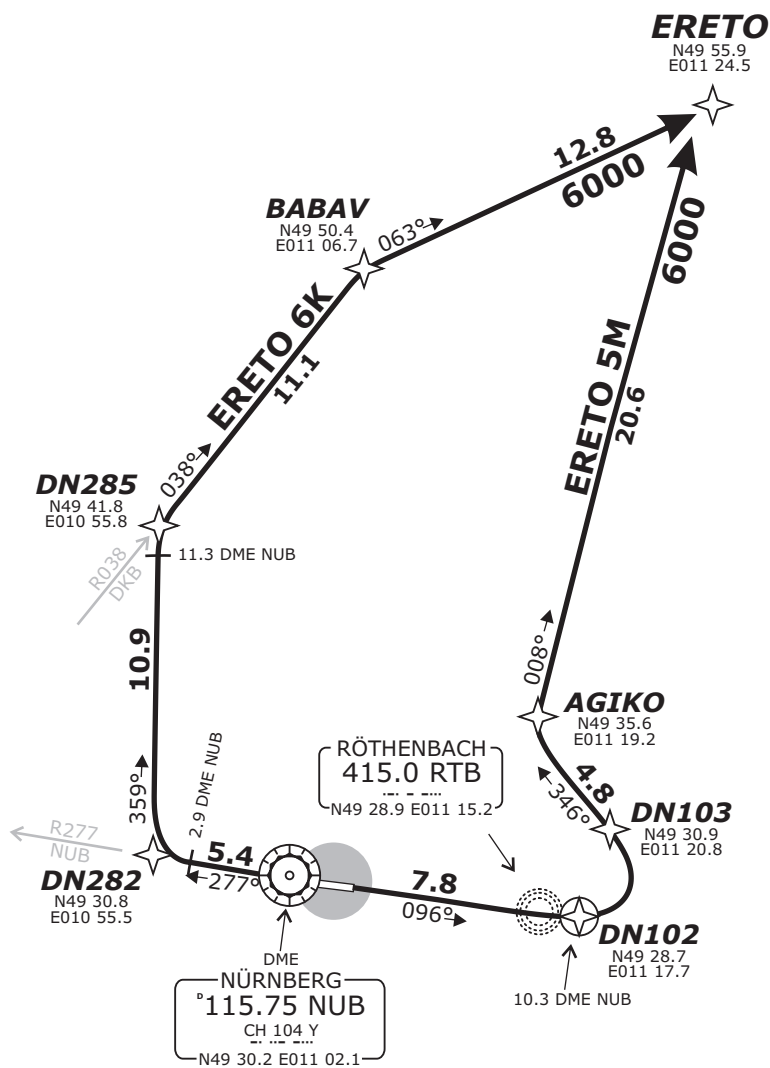
NÜRNBERG Tower
118.30

MÜNCHEN Radar
129.52

ERETO 6K - ERETO SIX KILO [ERET6K] (40.2 NM)
ERETO 5M - ERETO FIVE MIKE [ERET5M] (33.2 NM)



Do not use for real life navigation!



BEARINGS AND TRACKS ARE MAGNETIC.
ALTITUDES IN FEET MSL

SPEED RESTRICTION
MAX 250 KTS below FL100
or as by ATC.
Not applicable within airspace C.

Contact München Radar immediately after take-off!

Initial climb clearance FL70.

SID	RWY	ROUTING	GPS/FMS RNAV	REMARKS
ERETO 6K	28	On R277 NUB to 2.9 DME NUB, RT, on track 359° to 11.3 DME NUB, RT, on R038 DKB to BABAV, on track 063° to ERETO.	[A1500+] - DN282[R] - DN285[R] - BABAV[R] - ERETO.	After BABAV BRNAV equipment necessary.
ERETO 5M	10	On track 096° via RTB to 10.3 DME NUB, LT, via DN103 on track 346° to AGIKO, RT, on track 008° to ERETO. Cross 10.3 DME NUB at 3200 or above and AGIKO at 6000 or above.	[A1500+] - RTB - DN102[L] - DN103 - AGIKO[R] - ERETO.	1. PDG 5.0% (304 ft/NM) or more until passing 6000 due to airspace structure and glider activity. If unable to comply, inform ATC. 2. After 10.3 DME NUB BRNAV equipment necessary.

Revision: 2010-01-14-Change: Design

TRANS LEVEL: BY ATC
TRANS ALT: 5000'

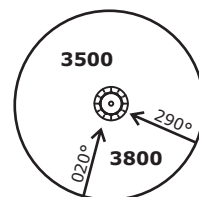
NÜRNBERG ATIS
123.07

NÜRNBERG Ground
118.10

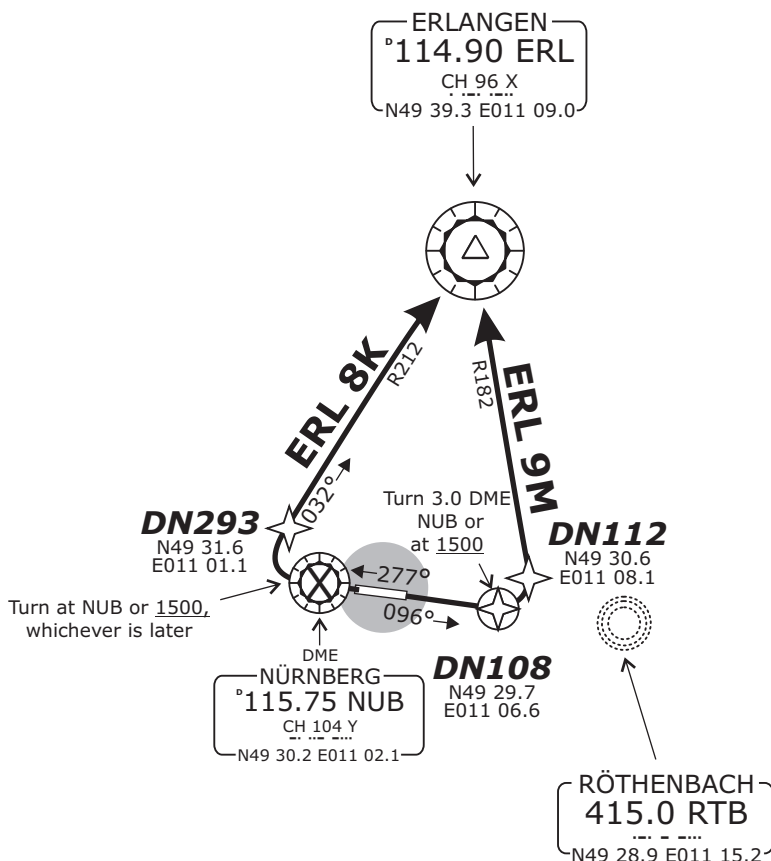
NÜRNBERG Tower
118.30

MÜNCHEN Radar
129.52

ERL 9M - ERLANGEN NINER MIKE [ERL9M] (9.3 NM)
ERL 8K - ERLANGEN EIGHT KILO [ERL8K] (10.3 NM)



MSA 25 NM from NUB VOR



BEARINGS AND TRACKS ARE MAGNETIC.
ALTITUDES IN FEET MSL

SPEED RESTRICTION
MAX 250 KTS below FL100
or as by ATC.
Not applicable within airspace C.

Remain with Nürnberg Tower 118.300!

Initial climb clearance FL70.

SID	RWY	ROUTING	GPS/FMS RNAV	REMARKS
ERL 8K	28	Direct to NUB or 1500, whichever is later; RT, on R212 ERL to ERL.	NUB - [A1500+;R] - DN293 - ERL.	1. For local IFR training flights at EDDN, prop-type aircraft up to 5.7 t MTOW only. 2. Contact München Radar when advised by Tower.
ERL 9M	10	On track 096° RTB to 3.0 DME NUB or 1500, whichever is later, LT, on R182 ERL to ERL.	DN108[A1500+;L] - DN112 - ERL.	1. For local IFR training flights at EDDN, prop-type aircraft up to 5.7 t MTOW only. 2. Contact München Radar when advised by Tower.

Do not use for real life navigation!

TRANS LEVEL: BY ATC
TRANS ALT: 5000'

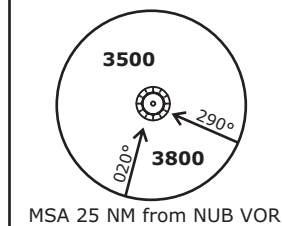
NÜRNBERG ATIS
123.07

NÜRNBERG Ground
118.10

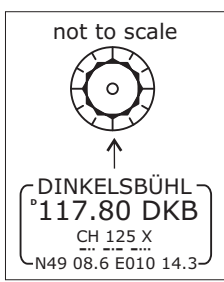
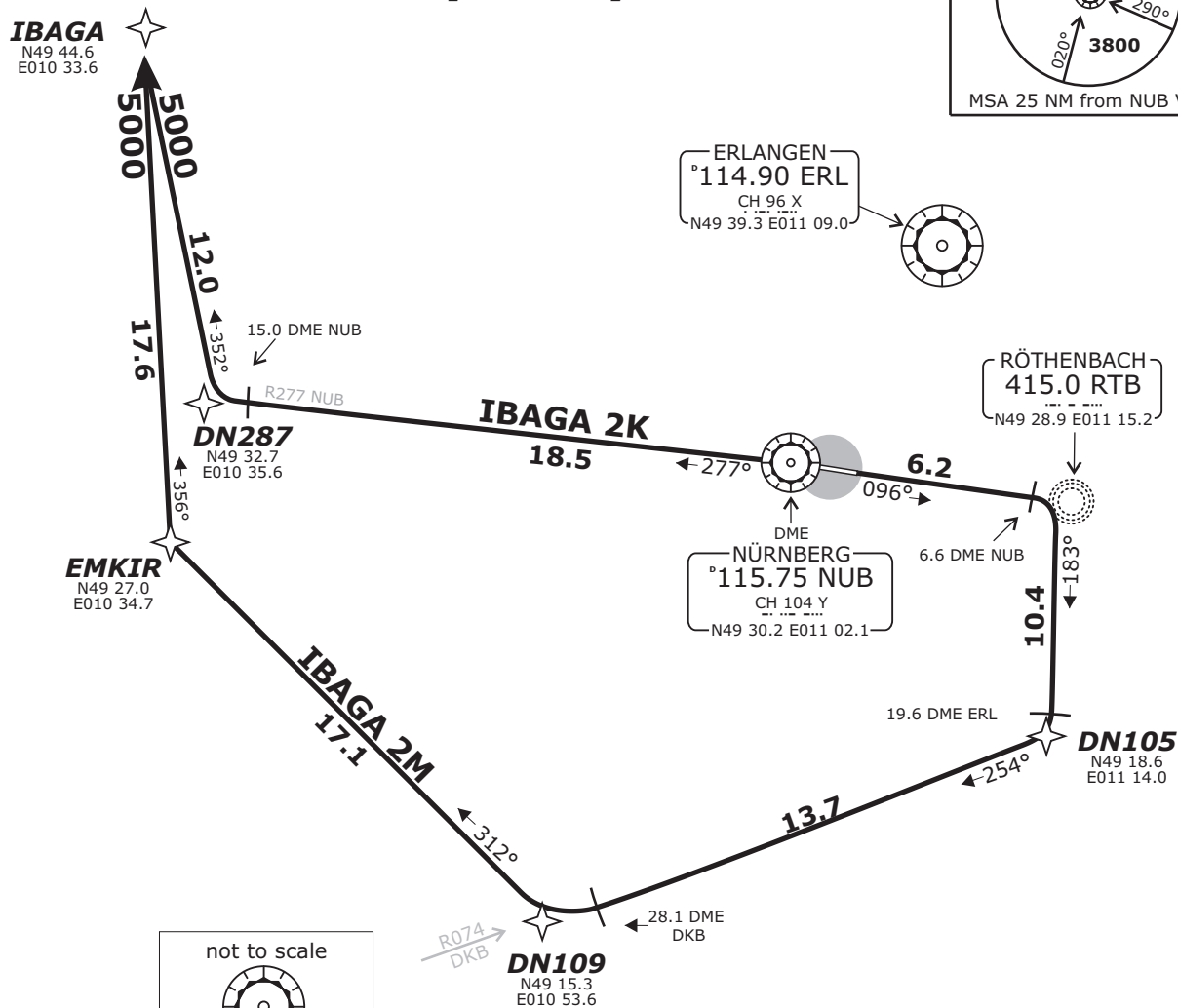
NÜRNBERG Tower
118.30

MÜNCHEN Radar
129.52

IBAGA 2K - IBAGA TWO KILO [IBAG2K] (30.5 NM)
IBAGA 2M - IBAGA TWO MIKE [IBAG2M] (65.0 NM)



Do not use for real life navigation!



BEARINGS AND TRACKS ARE MAGNETIC.
ALTITUDES IN FEET MSL

SPEED RESTRICTION
MAX 250 KTS below FL100
or as by ATC.
Not applicable within airspace C.

Contact München Radar immediately after take-off!

Initial climb clearance FL70.

SID	RWY	ROUTING	GPS/FMS RNAV	REMARKS
IBAGA 2K	28	On R277 NUB to 15.0 DME NUB; RT, on track 352° to IBAGA.	[A1500+] - DN287[R] - IBAGA.	1. Not available for flights intending to proceed via OSBIT G5 2. After 15.5 DME NUB BRNAV equipment necessary.
IBAGA 2M	10	On track 096° inbound RTB; at 6.6 DME NUB RT, on track 183° RTB to 19.6 DME ERL, RT, on R074 DKB to 28.1 DME DKB, RT, on track 312° to EMKIR, RT, on track 356° to IBAGA.	[A1500+] - RTB[R] - DN105[R] - DN109[R] - EMKIR[R] - IBAGA.	1. Not available for flights intending to proceed via OSBIT G5 2. After 28.1 DME DKB BRNAV equipment necessary.

TRANS LEVEL: BY ATC
TRANS ALT: 5000'

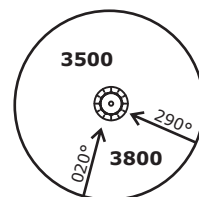
NÜRNBERG ATIS
123.07

NÜRNBERG Ground
118.10

NÜRNBERG Tower
118.30

MÜNCHEN Radar
129.52

RODIS 3K - RODIS THREE KILO [RODI3K] (53.7 NM)
RODIS 3M - RODIS THREE MIKE [RODI3M] (33.5 NM)

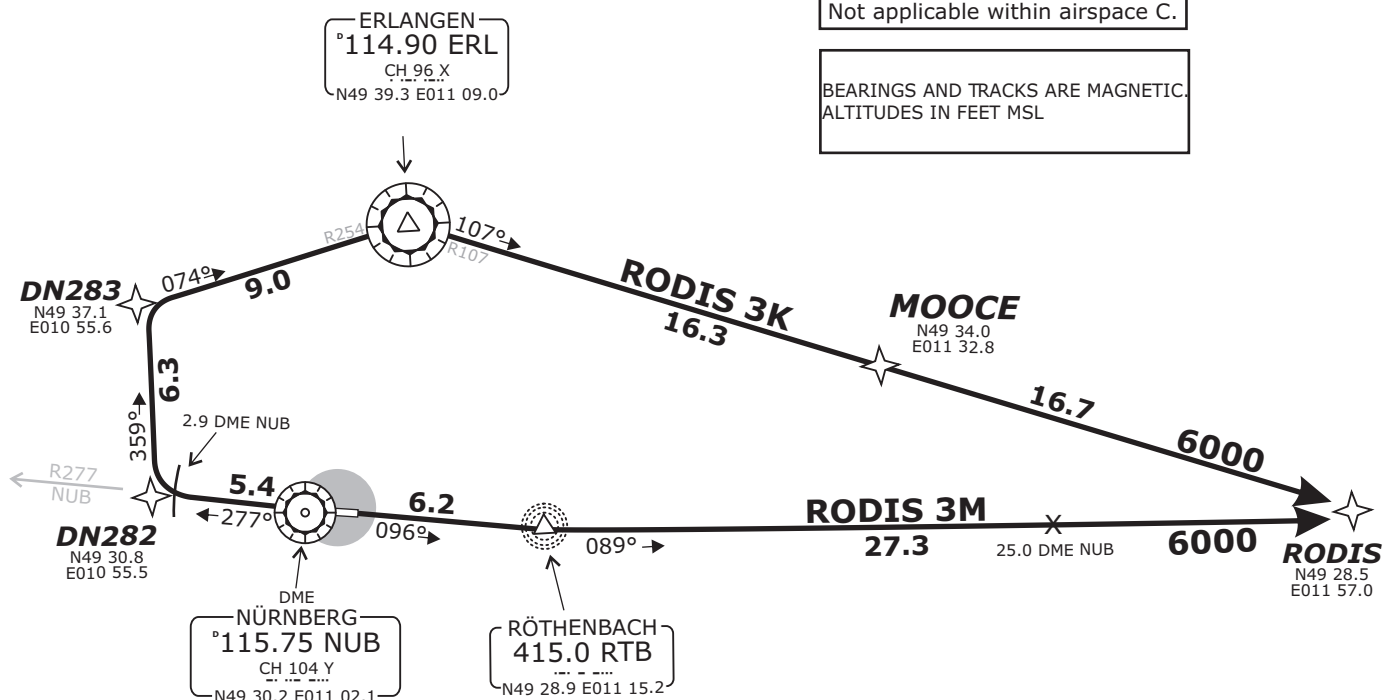


MSA 25 NM from NUB VOR

SPEED RESTRICTION
MAX 250 KTS below FL100
or as by ATC.
Not applicable within airspace C.

BEARINGS AND TRACKS ARE MAGNETIC.
ALTITUDES IN FEET MSL

Do not use for real life navigation!



Contact München Radar immediately after take-off!

Initial climb clearance FL70.

SID	RWY	ROUTING	GPS/FMS RNAV	REMARKS
RODIS 3K	28	On R277° NUB to 2.9 DME NUB; RT, on track 359° to intercept R254 ERL, on R254 ERL to ERL; on R107 ERL via MOOCE to RODIS	[A1500+] - DN282[R] - DN283[R] - ERL[R] - MOOCE - RODIS	Only available for flights with DEST EDMM and for flights continue via (U)L604.
RODIS 3M	10	Direct to RTB; LT, on track 089° RTB to RODIS.	[A1500+] - RTB[L] - RODIS.	Only available for flights with DEST EDMM and for flights continue via (U)L604.

Revision: 2010-01-14 - Change: Design

TRANS LEVEL: BY ATC
TRANS ALT: 5000'

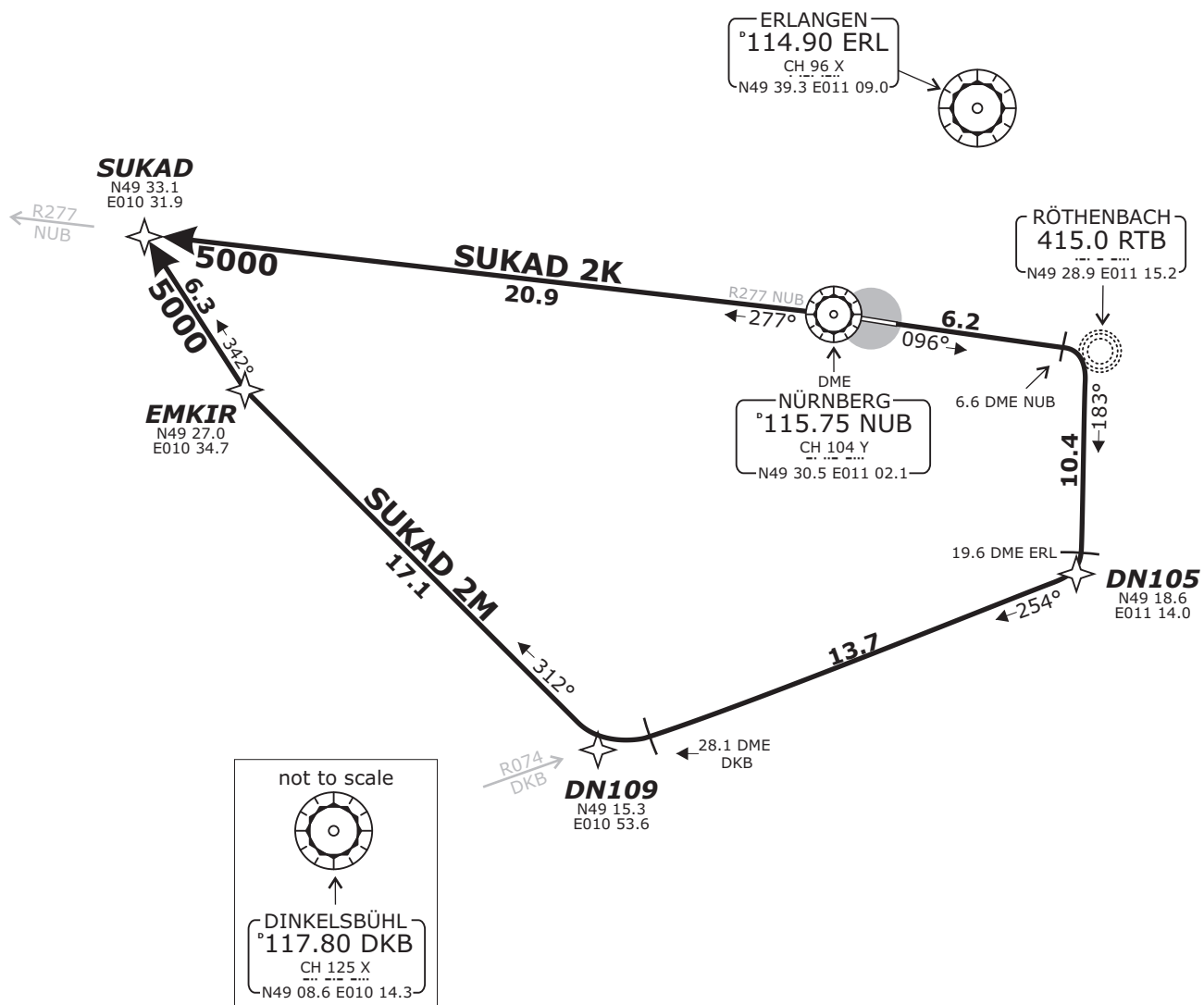
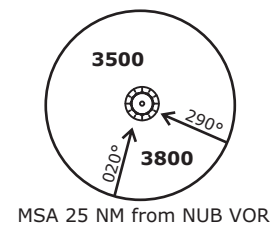
NÜRNBERG ATIS
123.07

NÜRNBERG Ground
118.10

NÜRNBERG Tower
118.30

MÜNCHEN Radar
129.52

SUKAD 2K - SUKAD TWO KILO [SUKA2K] (20.9 NM)
SUKAD 2M - SUKAD TWO MIKE [SUKA2M] (53.7 NM)



BEARINGS AND TRACKS ARE MAGNETIC.
ALTITUDES IN FEET MSL

SPEED RESTRICTION
MAX 250 KTS below FL100
or as by ATC.
Not applicable within airspace C.

Do not use for real life navigation!

Contact München Radar immediately after take-off!

Initial climb clearance FL70.

SID	RWY	ROUTING	GPS/FMS RNAV	REMARKS
SUKAD 2K	28	On R277 NUB to SUKAD.	[A1500+] - SUKAD.	Only for DEST EDDF or ETOU and flights with Y FPL
SUKAD 2M	10	On track 096° inbound RTB; at 5.3 DME NUB RT, on track 183° RTB to 19.6 DME ERL, RT, on R074 DKB to 28.1 DME DKB, RT, on track 312° to EMKIR, RT, on track 342° to SUKAD.	[A1500+] - RTB[R] - DN105[R] - DN109[R] - EMKIR[R] - SUKAD.	1. Only for DEST EDDF or ETOU and flights with Y FPL 2. After 28.1 DME DKB BRNAV equipment necessary.

TRANS LEVEL: BY ATC
TRANS ALT: 5000'

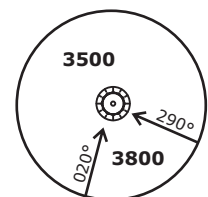
NÜRNBERG ATIS
123.07

NÜRNBERG Ground
118.10

NÜRNBERG Tower
118.30

MÜNCHEN Radar
129.52

SULUS 3K - SULUS THREE KILO [SULU3K] (40.3 NM)
SULUS 3M - SULUS THREE MIKE [SULU3M] (42.8 NM)



MSA 25 NM from NUB VOR

SULUS
N50 04.5
E010 43.7

5000

5000

SULUS 3K

23.7

339°

11.2

359°

11.2

277°

5.4

096°

2.8

096°

8.3

342°

11.2

350°

11.2

312°

3.5

17.0

SULUS 3M

5000

5000

BAMAS
N49 52.8
E011 02.7

BABAV
N49 50.4
E011 06.7

DN286
N49 42.1
E010 55.8

DN282
N49 30.8
E010 55.5

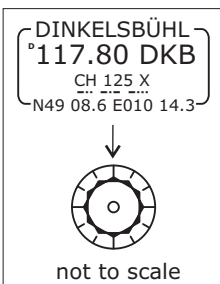
DN101
N49 31.4
E011 12.7

DN100
N49 29.4
E011 10.1

NÜRNBERG
°115.75 NUB
CH 104 Y
N49 30.2 E011 02.1

ERLANGEN
°114.90 ERL
CH 96 X
N49 39.3 E011 09.0

RÖTHENBACH
415.0 RTB
N49 28.9 E011 15.2



not to scale

BEARINGS AND TRACKS ARE MAGNETIC.
ALTITUDES IN FEET MSL

SPEED RESTRICTION
MAX 250 KTS below FL100
or as by ATC.
Not applicable within airspace C.

Do not use for real life navigation!

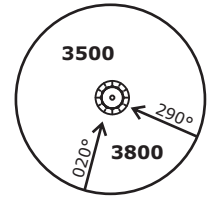
Contact München Radar immediately after take-off!

Initial climb clearance FL70.

SID	RWY	ROUTING	GPS/FMS RNAV	REMARKS
SULUS 3K	28	On R277 NUB to 2.9 DME NUB, RT, on track 359° to 11.7 DME NUB, LT, on R339 NUB to SULUS.	[A1500+] - DN282[R] - DN286[L] - SULUS.	Only available for flights intending to proceed SULUS L604
SULUS 3M	10	On track 096° inbound RTB; at 5.3 DME NUB LT, on R162 ERL to ERL; on R350 ERL to 9.9 DME ERL, LT on track 312° via BAMAS to SULUS.	[A1500+] - DN100[L] - DN101 - ERL[R] - BABAV[L] - BAMAS - SULUS	1. Only available for flights intending to proceed SULUS L604 2. After 9.9 DME ERL RNAV equipment necessary.

TRANS LEVEL: BY ATC TRANS ALT: 5000'	NÜRNBERG ATIS 123.07	NÜRNBERG Ground 118.10	NÜRNBERG Tower 118.30	MÜNCHEN Radar 129.52
---	-------------------------	---------------------------	--------------------------	-------------------------

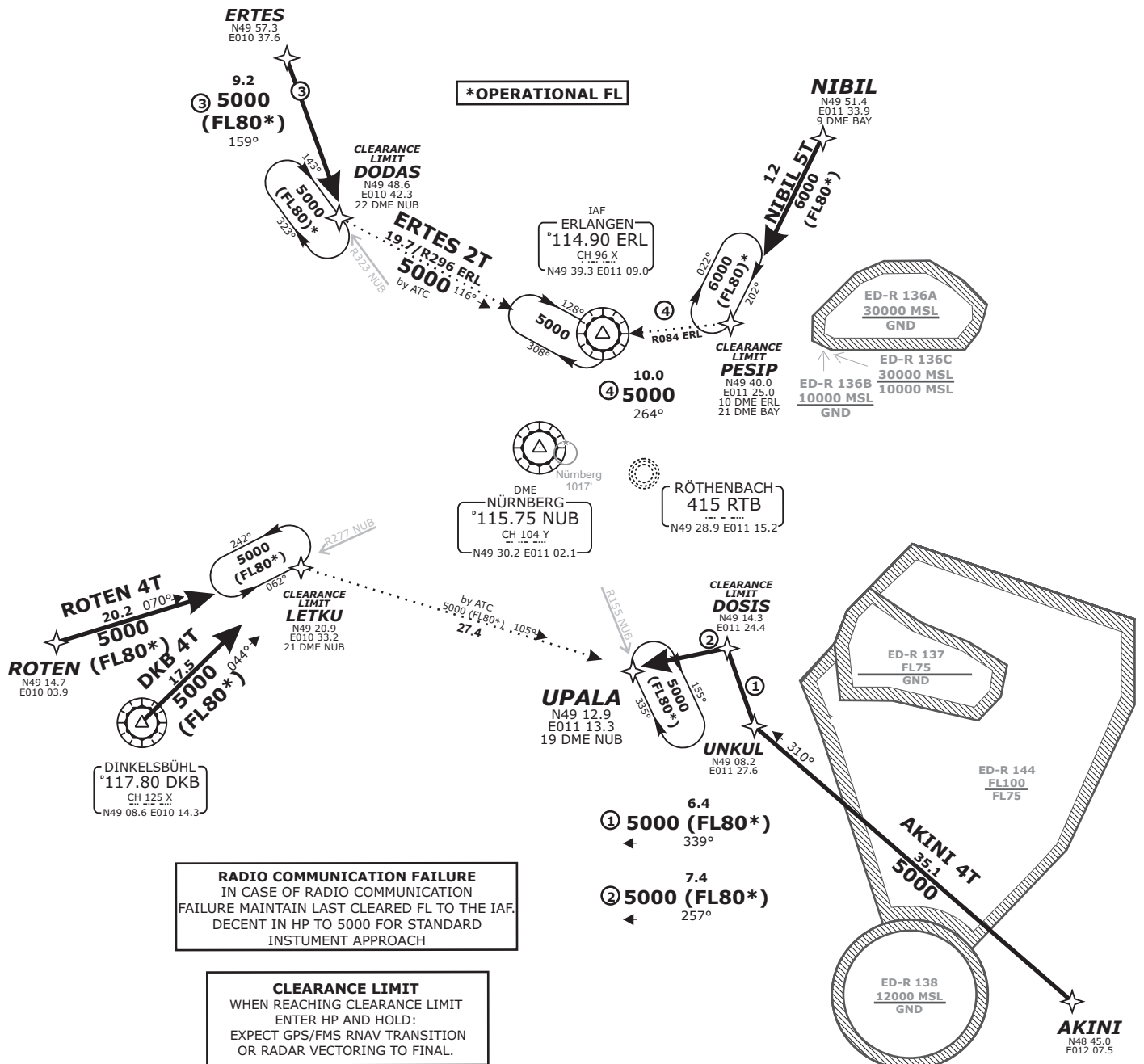
ERTES 2T - ERTES TWO TANGO [ERTE2T]
NIBIL 5T - NIBIL FIVE TANGO [NIBI5T]
AKINI 4T - AKINI FOUR TANGO [AKIN4T]
DKB 4T - DINKELSBÜHL FOUR TANGO [DKB4T]
ROTEN 4T - ROTEN FOUR TANGO [ROTE4T]



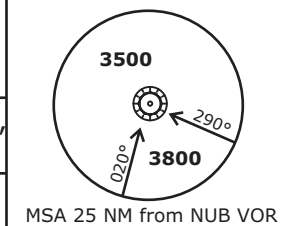
MSA 25 NM from NUB VOR

VERTICAL PLANNING INFORMATION			
RWY 28		RWY 10	
PLAN YOUR DESCENT SO AS TO CROSS			
ROTEN	FL110	ROTEN	FL110
DKB	FL110	DKB	FL110

Do not use for real life navigation!

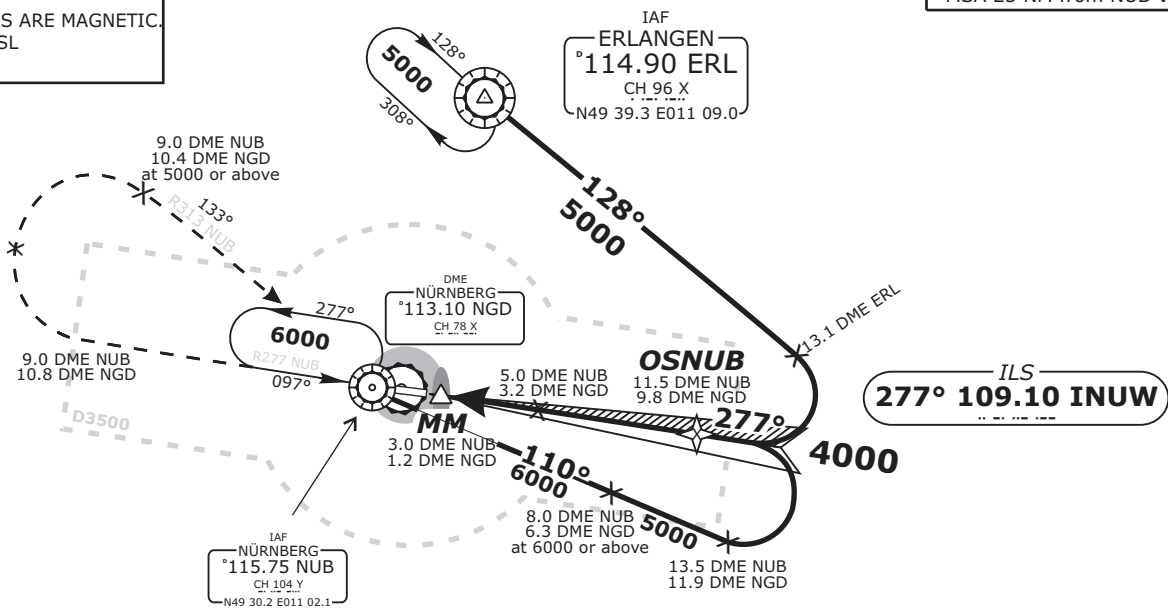


TRANS LEVEL: BY ATC TRANS ALT: 5000'		NÜRNBERG ATIS 123.07	NÜRNBERG Ground 118.10	NÜRNBERG Tower 118.30	MÜNCHEN Radar 129.52
ILS INUW 109.10	DME NUB 115.75	Final Apch Course 277°	FAF OSNUB 4000'	MDA(H) <i>Refer to Minimums</i>	Apt. Elev. 1046' Rwy Elev. 1046'



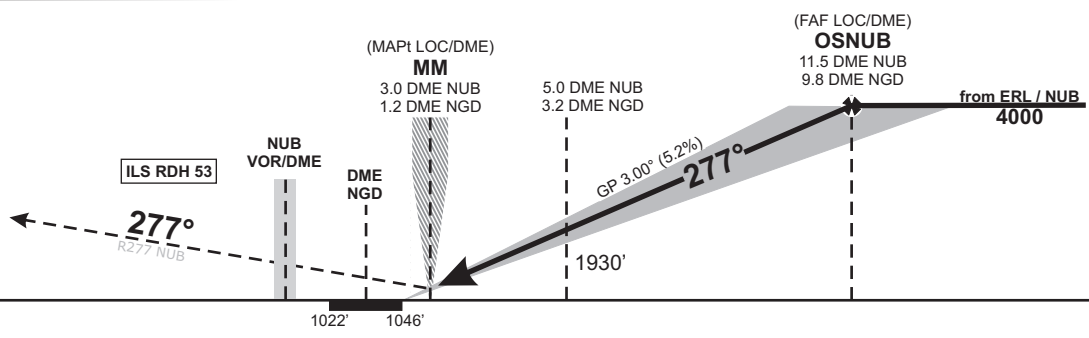
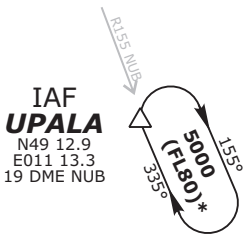
MISSED APCH: Climb on R277° NUB to 9.0 DME NUB, RT on R313 NUB to NUB VOR/DME, climbing to 6000'. Cross 9.0 DME NUB at 5000 or above.

BEARINGS AND TRACKS ARE MAGNETIC.
ALTITUDES IN FEET MSL



ILS
277° 109.10 INUW

IN CASE OF RADIO COMMUNICATION FAILURE
APPROACH FROM IAF UPALA:
PROCEED TO ERL VOR/DME AT FL80, OVER ERL LT
AND FOLLOW ILS APPROACH TO RWY 28



OCA (OCH)	A	B	C	D	DME NUB	4	5	6	7	8	9	10	11
ILS CAT I	1281 (235)	1291 (245)	1305 (259)	1315 (269)	DIST THR	1.6	2.6	3.6	4.6	5.6	6.6	7.6	8.6
ILS CAT II	1097 (51)	1113 (67)	1127 (81)	1140 (94)	ALTITUDE	1610	1930	2250	2570	2880	3200	3520	3840
LOC/DME	1430 (380)	1430 (380)	1430 (380)	1430 (380)	GS	kts		80	100	120	140	160	180
CIRCLING*	1720	1720	1920	1940	5.0 DME NUB - THR (2.6 NM)	MIN:SEC		1:57	1:34	1:18	1:07	0:59	0:52
*North of aerodrome only					Rate of descent (5.2%)	ft/MIN		420	530	640	740	850	960

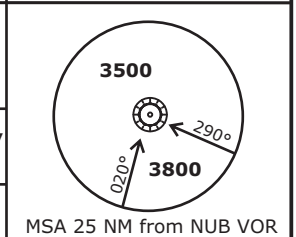
CAT IIIa and CAT IIIb (minimum RVR 75m) approved.

Do not use for real life navigation!

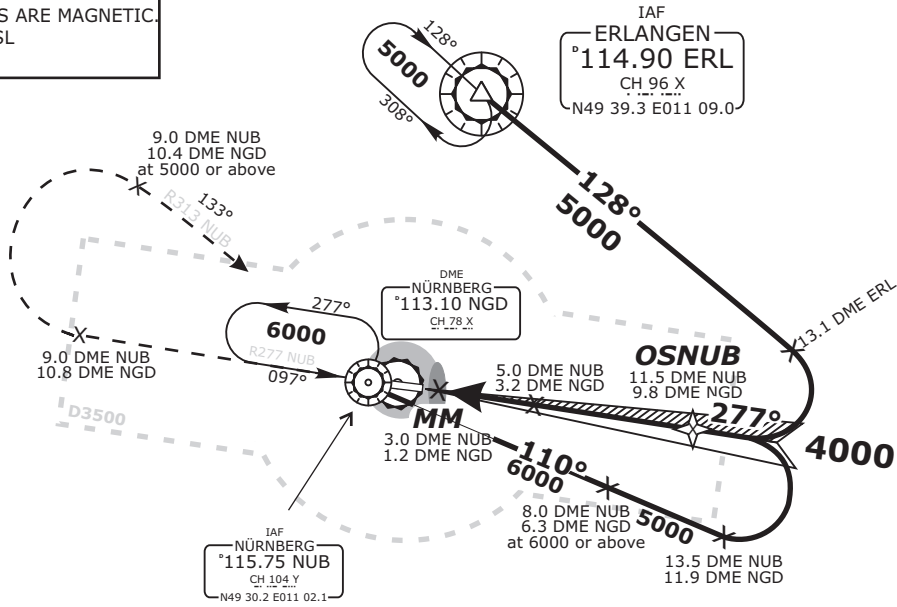
TRANS LEVEL: BY ATC TRANS ALT: 5000'		NÜRNBERG ATIS 123.07	NÜRNBERG Ground 118.10	NÜRNBERG Tower 118.30	MÜNCHEN Radar 129.52
---	--	-------------------------	---------------------------	--------------------------	-------------------------

DME NGD 113.10	DME NUB 115.75	Final Apch Course 277°	FAF OSNUB 4000'	MDA(H) <i>Refer to Minimums</i>	Apt.Elev. 1046' Rwy Elev. 1046'
-----------------------------	-----------------------------	----------------------------------	------------------------------	--	------------------------------------

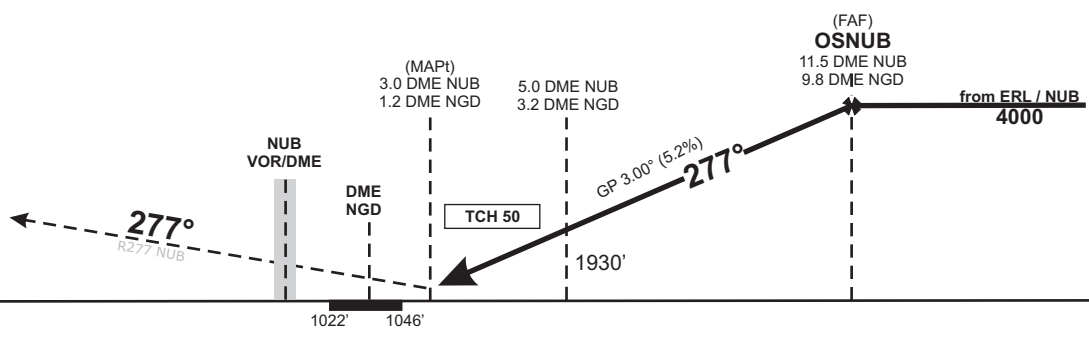
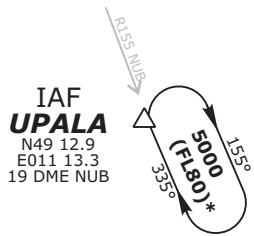
MISSED APCH: Climb on R277° NUB to 9.0 DME NUB, RT, on R313 NUB to NUB VOR/DME, climbing to 6000'. Cross 9.0 DME NUB at 5000 or above.



BEARINGS AND TRACKS ARE MAGNETIC.
ALTITUDES IN FEET MSL



IN CASE OF RADIO COMMUNICATION FAILURE
APPROACH FROM IAF UPALA:
PROCEED TO ERL VOR/DME AT FL80, OVER ERL LT
AND FOLLOW VOR APPROACH TO RWY 28



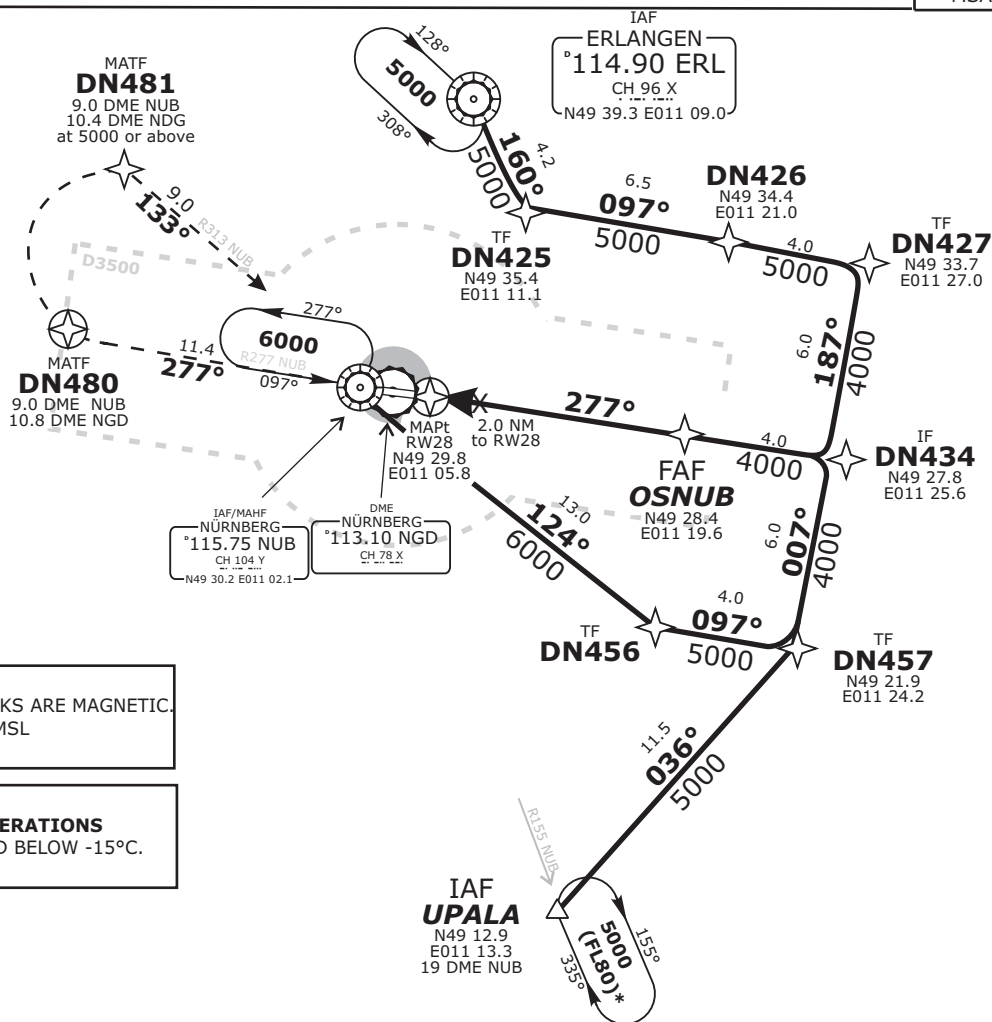
OCA (OCH)	A	B	C	D	DME NUB	4	5	6	7	8	9	10	11
VOR/DME	1670 (620)	1670 (620)	1670 (620)	1670 (620)	DIST THR	1.6	2.6	3.6	4.6	5.6	6.6	7.6	8.6
CIRCLING*	1720	1720	1920	1940	ALTITUDE	1610	1930	2250	2570	2880	3200	3520	3840
					GS	kts		80	100	120	140	160	180
					5.0 DME NUB - 3.0 DME NUB (2.0 NM)	MIN:SEC		1:30	1:12	1:00	0:51	0:45	0:40
*North of aerodrome only					Rate of descent (5.2%)	ft/MIN		420	530	640	740	850	960

Timing not authorized for defining the MAPt.

Do not use for real life navigation!

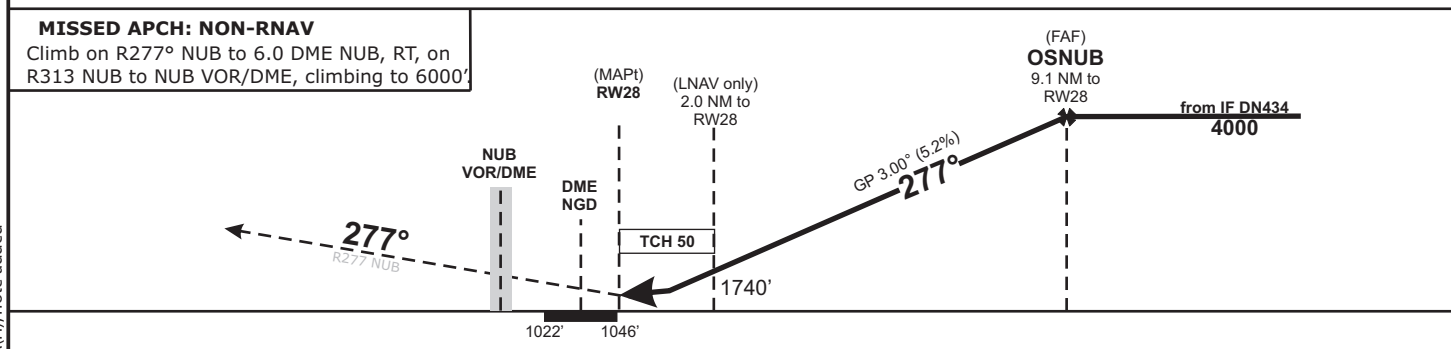
TRANS LEVEL: BY ATC TRANS ALT: 5000'		NÜRNBERG ATIS 123.07		NÜRNBERG Ground 118.10		NÜRNBERG Tower 118.30		MÜNCHEN Radar 129.52	
DME NGD 113.10	DME NUB 115.75	Final Apch Course 277°		FAF OSNUB 4000'		MDA(H) <i>Refer to Minimums</i>		Apt. Elev. 1046' Rwy Elev. 1046'	
MISSED APCH: RNAV (GPS)	On track 277° to DN480, RT, via DN481 on track 133° to NUB, climbing to 6000. Cross DN481 at 5000 or above.								
	DN480[R] - DN481[A5000+] - NUB[A6000]								

Do not use for real life navigation!



BEARINGS AND TRACKS ARE MAGNETIC.
ALTITUDES IN FEET MSL

BARO-VNAV OPERATIONS
NOT AUTHORIZED BELOW -15°C.



OCA (OCH)	A	B	C	D	DIST THR /Rw28	2	3	4	5	6	7	8	9
LNAV	1670 (620)	1670 (620)	1670 (620)	1670 (620)	ALTITUDE	1740	2060	2370	2690	3010	3330	3650	3970
LNAV/VNAV	1520 (470)	1520 (470)	1520 (470)	1520 (470)									
					GS	kts		80	100	120	140	160	180
					OSNUB-RW28 (9.1 NM)	MIN:SEC		6:50	5:28	4:33	3:54	3:25	3:02
					Rate of descent (5.2%)	ft/MIN		420	530	640	740	850	960

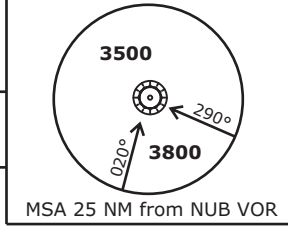
Timing not authorized for defining the MAPt.

Revision: 2010-01-14 - Change: Design, OCA(H), note added

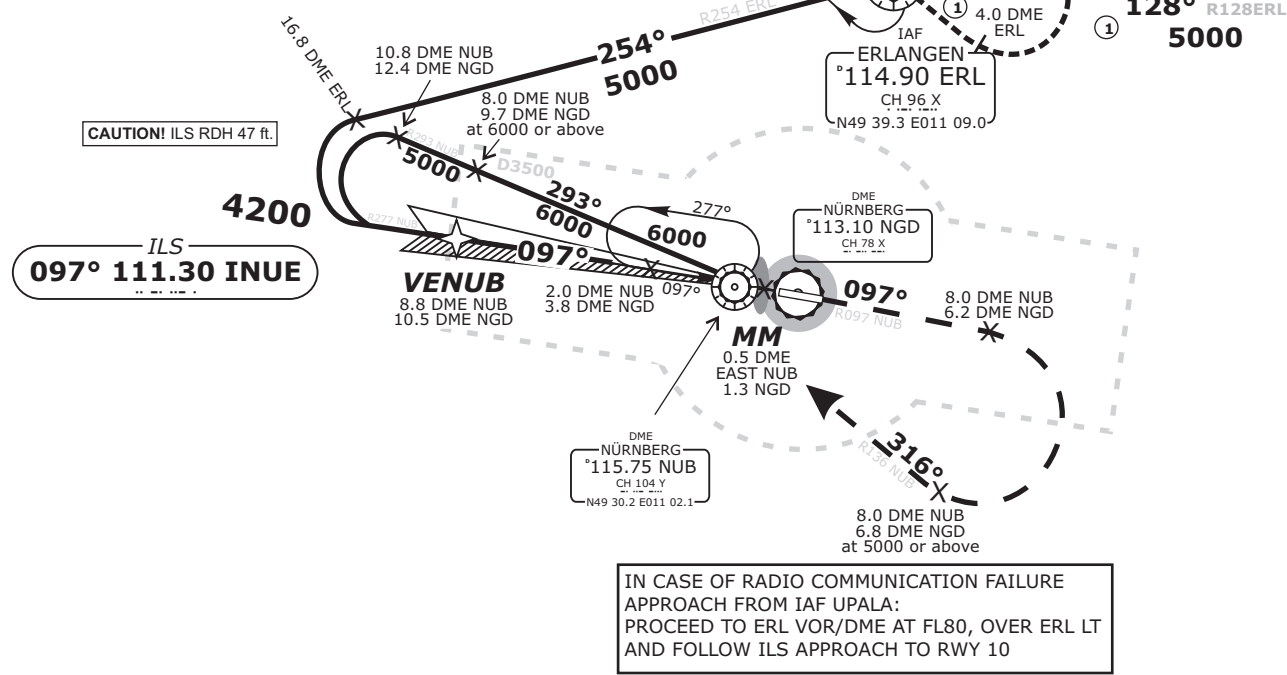
TRANS LEVEL: BY ATC TRANS ALT: 5000'		NÜRNBERG ATIS 123.07	NÜRNBERG Ground 118.10	NÜRNBERG Tower 118.30	MÜNCHEN Radar 129.52
---	--	-------------------------	---------------------------	--------------------------	-------------------------

ILS INUE 111.30	DME NUB 115.75	Final Apch Course 097°	FAF VENUB 4200'	MDA(H) <i>Refer to Minimums</i>	Apt. Elev. 1046' Rwy Elev. 1022'
---------------------------	--------------------------	----------------------------------	---------------------------	------------------------------------	-------------------------------------

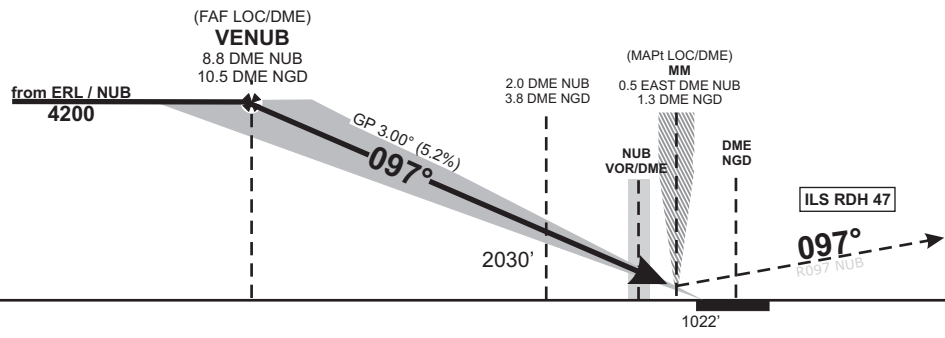
MISSED APCH: Climb on R097 NUB to 8.0 DME NUB, RT, on R136 NUB to NUB VOR/DME, climbing to 6000'.



BEARINGS AND TRACKS ARE MAGNETIC.
ALTITUDES IN FEET MSL



Do not use for real life navigation!



OCA (OCH)	A	B	C	D	DME NUB	8	7	6	5	4	3	2	1
ILS CAT I	1235 (213)	1245 (223)	1255 (233)	1265 (243)	DIST THR	9	8	7	6	5	4	3	2
LOC/DME	1440 (420)	1440 (420)	1440 (420)	1440 (420)	ALTITUDE	3940	3620	3300	2980	2670	2350	2030	1710
CIRCLING*	1720	1720	1920	1940	GS	kts		80	100	120	140	160	180
					2.0 DME NUB - THR (3.0 NM)	MIN:SEC		2:15	1:48	1:30	1:17	1:08	1:00
*North of aerodrome only					Rate of descent (5.2%)	ft/MIN		420	530	640	740	850	960

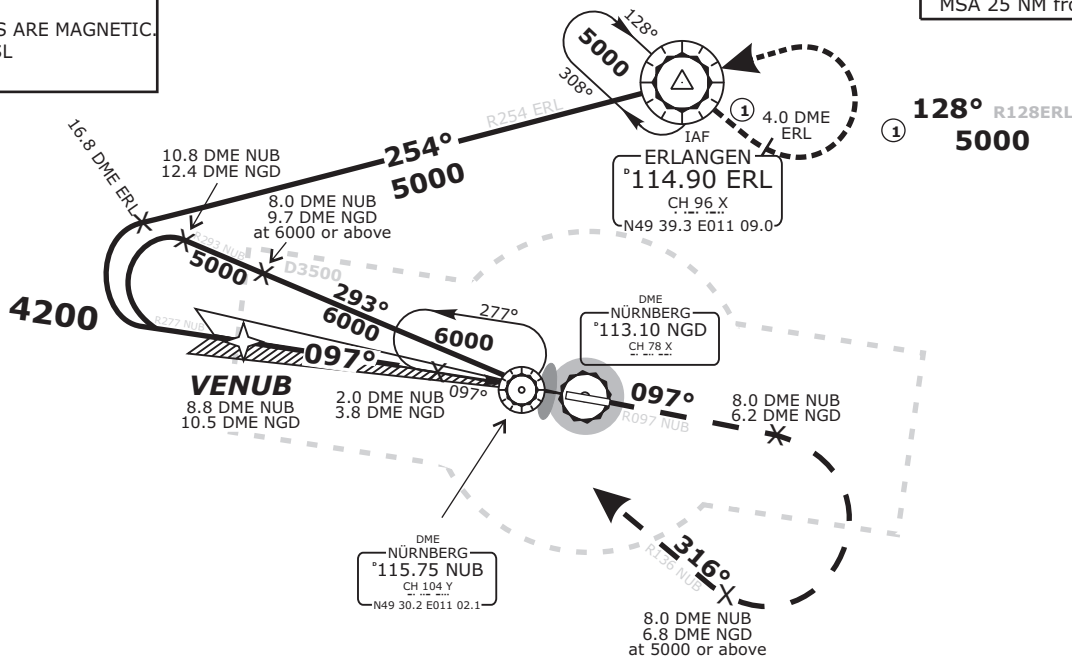
Revision: 2010-01-14 - Change: Design

TRANS LEVEL: BY ATC TRANS ALT: 5000'	NÜRNBERG ATIS 123.07	NÜRNBERG Ground 118.10	NÜRNBERG Tower 118.30	MÜNCHEN Radar 129.52
---	-------------------------	---------------------------	--------------------------	-------------------------

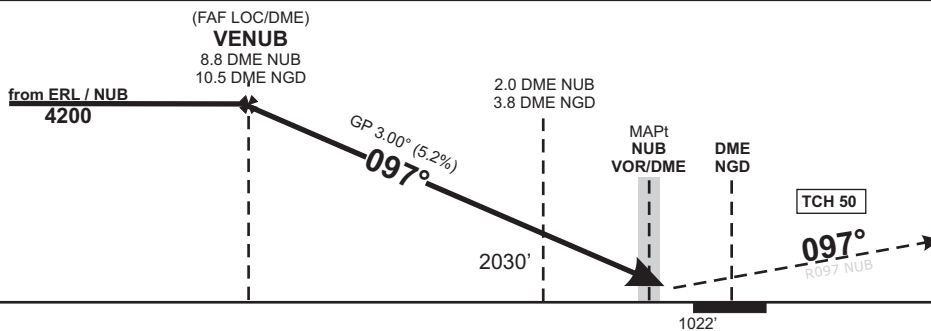
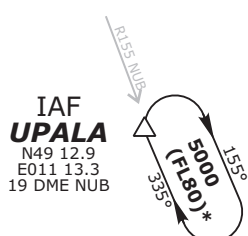
DME NGD 113.10	DME NUB 115.75	Final Apch Course 097°	FAF VENUB 4200'	MDA(H) <i>Refer to Minimums</i>	Apt.Elev. 1046' Rwy Elev. 1022'	<p>MSA 25 NM from NUB VOR</p>
---------------------------------	---------------------------------	----------------------------------	------------------------------	--	------------------------------------	-------------------------------

MISSED APCH: Climb on R097° NUB to 8.0 DME NUB, RT, on R136 NUB to NUB VOR/DME, climbing to 6000'.

BEARINGS AND TRACKS ARE MAGNETIC.
ALTITUDES IN FEET MSL



IN CASE OF RADIO COMMUNICATION FAILURE
APPROACH FROM IAF UPALA:
PROCEED TO ERL VOR/DME AT FL80, OVER ERL LT
AND FOLLOW VOR APPROACH TO RWY 10



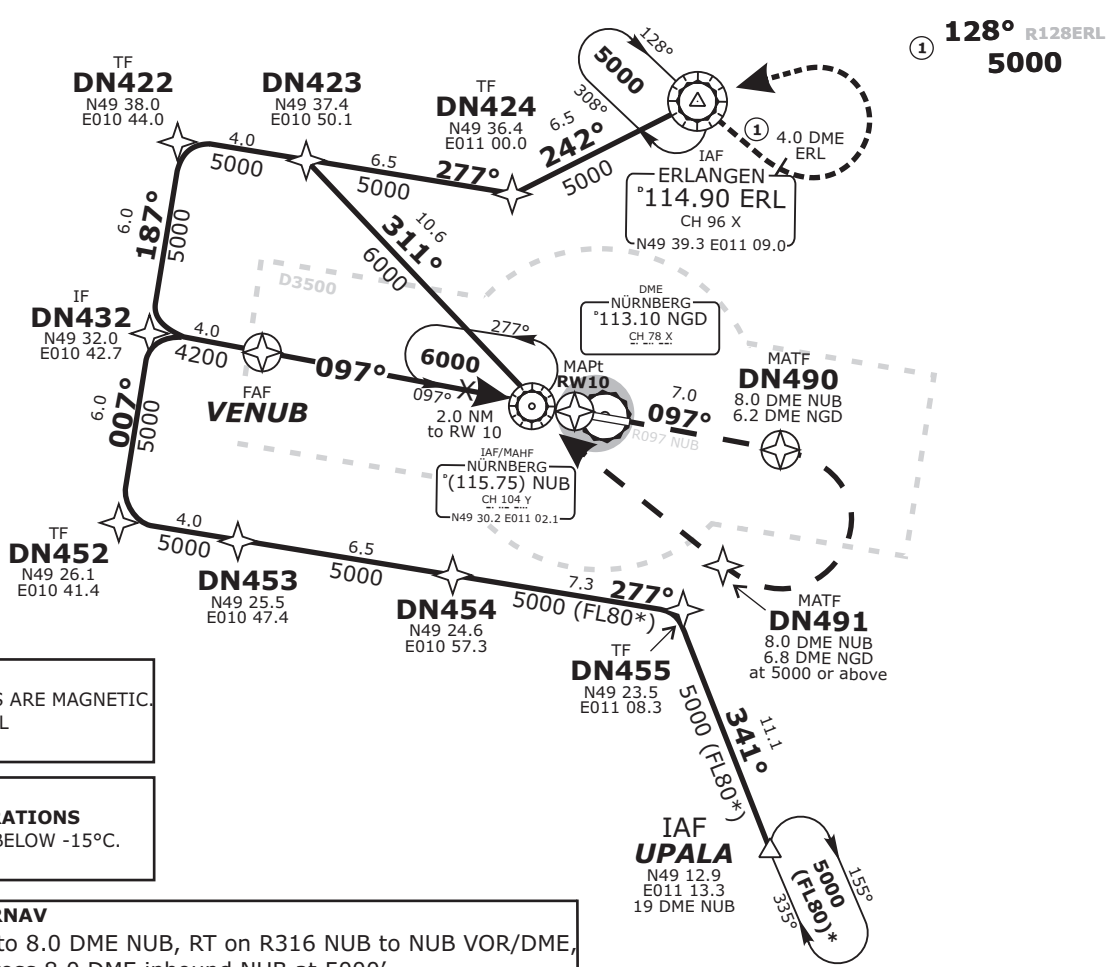
OCA (OCH)	A	B	C	D	DME NUB	8	7	6	5	4	3	2	1
LOC/DME	1530 (510)	1530 (510)	1530 (510)	1530 (510)	DIST THR	9	8	7	6	5	4	3	2
CIRCLING*	1720	1720	1920	1940	ALTITUDE	3940	3620	3300	2980	2670	2350	2030	1710
					GS	kts		80	100	120	140	160	180
					2.0 DME NUB - NUB	MIN:SEC		1:30	1:12	1:00	0:51	0:45	0:40
*North of aerodrome only					Rate of descent (5.2%)	ft/MIN		420	530	640	740	850	960

Timing not authorized for defining the MAPt.

Do not use for real life navigation!

TRANS LEVEL: BY ATC TRANS ALT: 5000'		NÜRNBERG ATIS 123.07	NÜRNBERG Ground 118.10	NÜRNBERG Tower 118.30	MÜNCHEN Radar 129.52
DME NGD 113.10	DME NUB 115.75	Final Apch Course 097°	FAF VENUB 4200'	MDA(H) <i>Refer to Minimums</i>	Apt. Elev. 1046' Rwy Elev. 1022'
MISSED APCH: RNAV (GPS)	On track 097° to DN490, RT, via DN491 on track 316° to NUB, climbing to 6000'. Cross DN491 at 5000' or above. <u>DN490[R] - DN491[A5000+] - NUB[A6000]</u>				

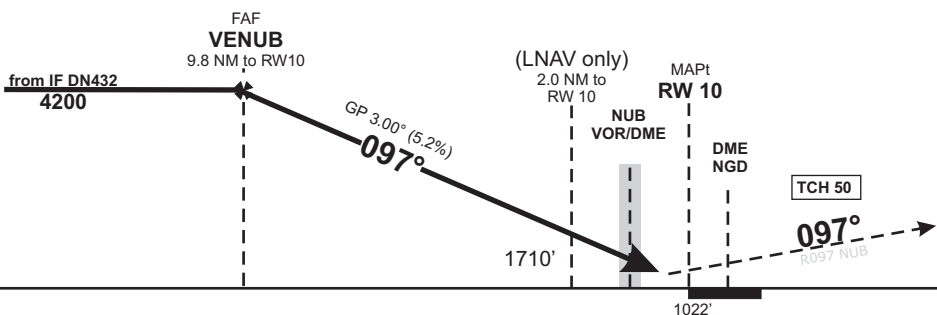
Do not use for real life navigation!



BEARINGS AND TRACKS ARE MAGNETIC.
ALTITUDES IN FEET MSL

BARO-VNAV OPERATIONS
NOT AUTHORIZED BELOW -15°C.

MISSED APCH: NON-RNAV
Climb on R097 NUB to 8.0 DME NUB, RT on R316 NUB to NUB VOR/DME, climbing to 6000', Cross 8.0 DME inbound NUB at 5000'



OCA (OCH)	A	B	C	D	DIST THR	9	8	7	6	5	4	3	2
LNAV	1430 (410)	1430 (410)	1430 (410)	1430 (410)	ALTITUDE	3940	3620	3310	2990	2670	2350	2030	1710
LNAV/VNAV	1440 (410)	1440 (410)	1440 (410)	1440 (410)									
					GS	kts		80	100	120	140	160	180
					VENUB - RW10 (9.8 NM)	MIN:SEC		7:21	5:53	4:54	4:12	3:41	3:16
					Rate of descent (5.2%)	ft/MIN		420	530	640	740	850	960

Timing not authorized for defining the MAPt.

Revision: 2010-01-14 - Change: Design, OCA(H), note added