

JEPPESSEN

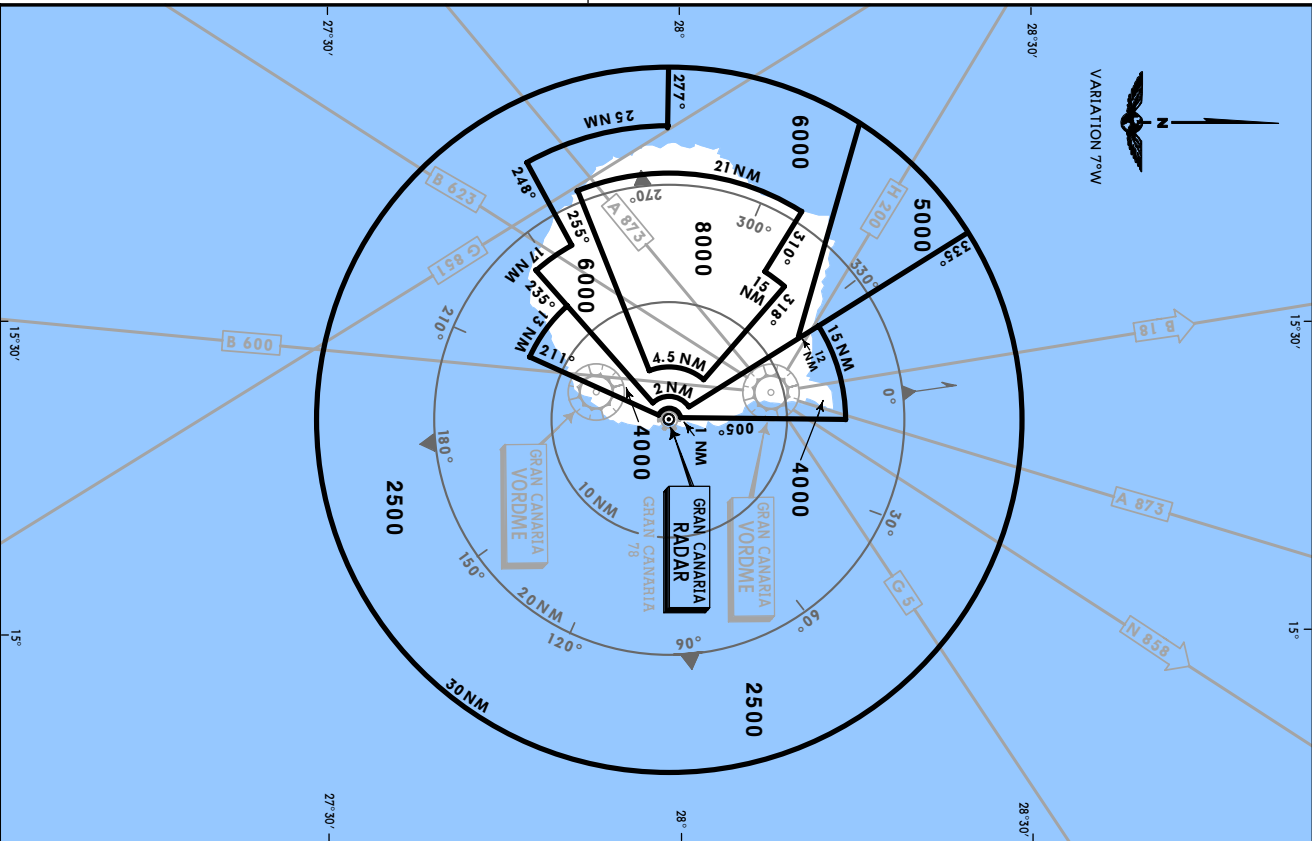
12 JUL 02

10-1R

GRAN CANARIA, CANARY IS

RADAR

RADAR VECTORING AREA



GCLP/LPA
GRAN CANARIA

18 MAR 05

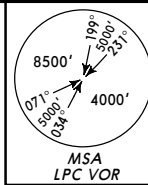
10-2

JEPPESSEN GRAN CANARIA, CANARY IS
STAR

ATIS
118.6

Apt Elev
78'

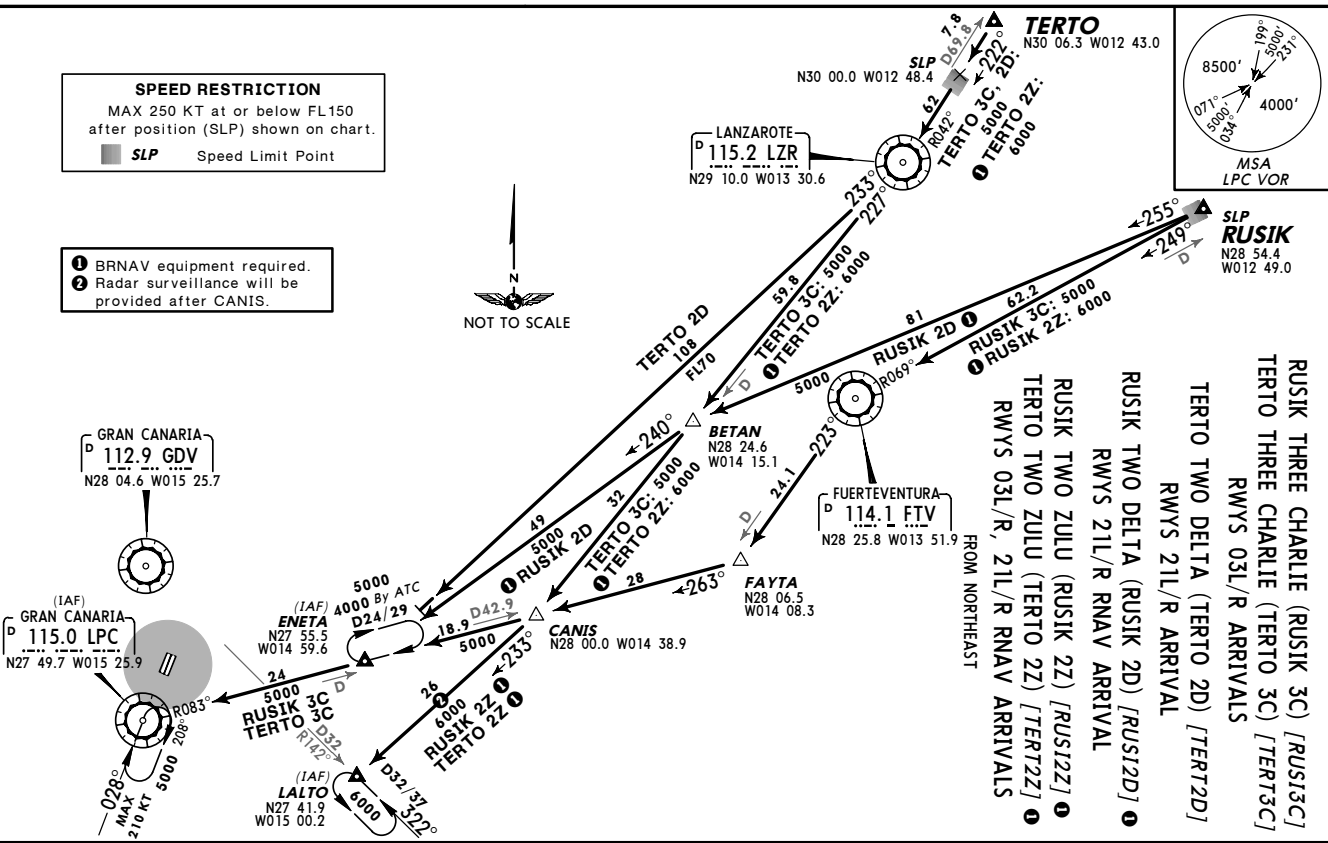
Alt. Set: MPA
Trans level: By ATC Trans alt: 6000'



SLP
N28 54.4
W012 49.0

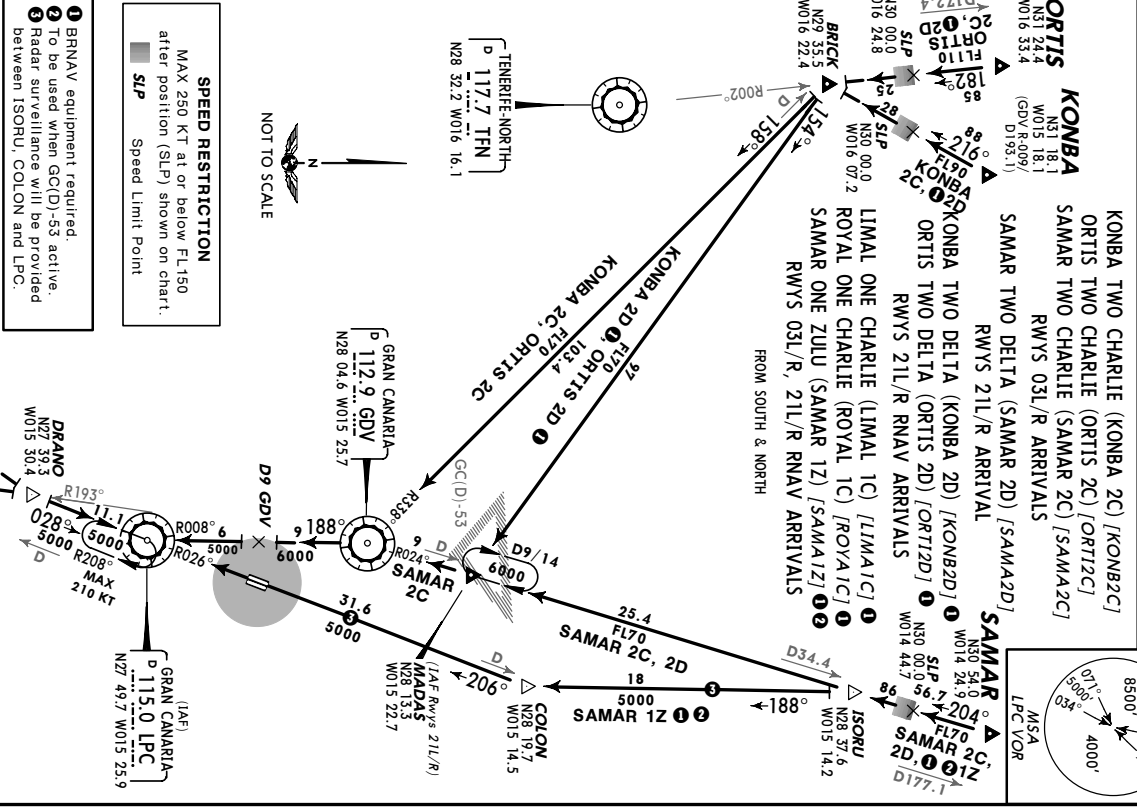
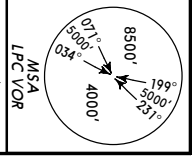
SPEED RESTRICTION
MAX 250 KT at or below FL150
after position (SLP) shown on chart.
■ SLP Speed Limit Point

- ① BRNAV equipment required.
- ② Radar surveillance will be provided after CANIS.



JEPPesen GRAN CANARIA, CANARY IS
STAR

ATIS 118.6
 Apt Elev 78'
 Alt Set: IPA
 Trans level: By ATC
 Trans alt: 6000'

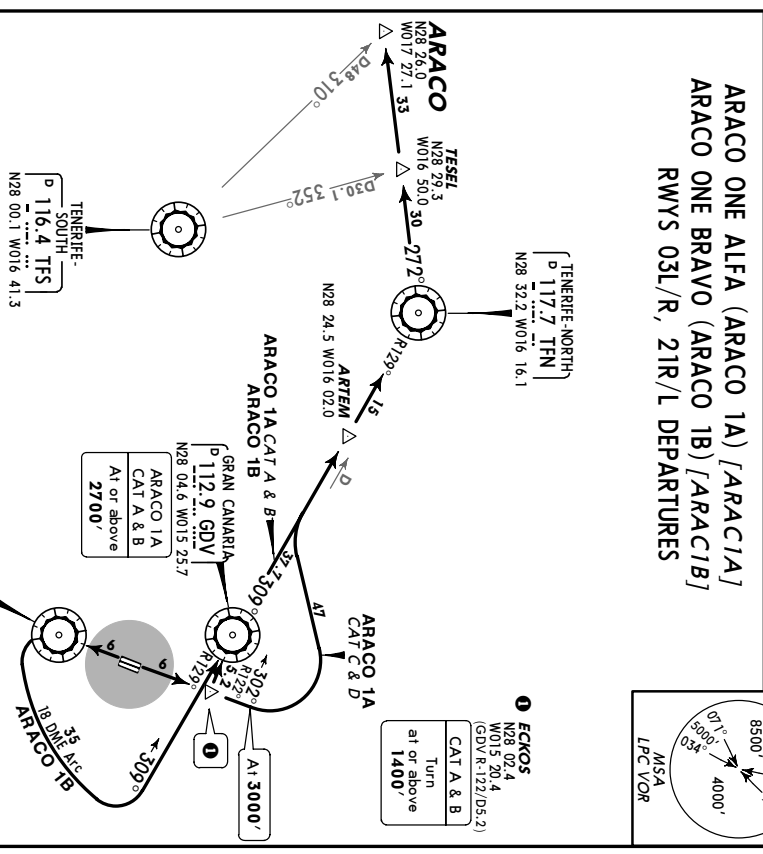
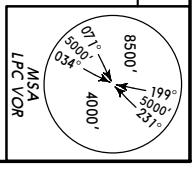


- 1 BRNAV equipment required.
- 2 To be used when GC(D)-53 active.
- 3 Radar surveillance will be provided between ISORLU, COLON and LPC.

SPEED RESTRICTION
 MAX 250 KT at or below FL150
 after position (SLP) shown on chart.
 SLP Speed Limit Point

JEPPesen GRAN CANARIA, CANARY IS
STAR

ATIS 78'
 Apt Elev 78'
 Trans level: By ATC
 Trans alt: 6000'



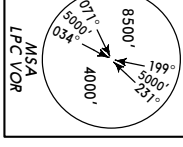
- These SIDs require minimum climb gradients of
 - ARACCO 1A (CAT A & B)** 243' per NM (4%) until leaving 2700'.
 - ARACCO 1B** 304' per NM (5%) until leaving 1300'.
- | Gnd speed-KT | 75 | 100 | 150 | 200 | 250 | 300 |
|--------------|-----|-----|-----|------|------|------|
| 243' per NM | 304 | 405 | 608 | 810 | 1013 | 1215 |
| 304' per NM | 380 | 506 | 760 | 1013 | 1266 | 1519 |

INITIAL CLIMB

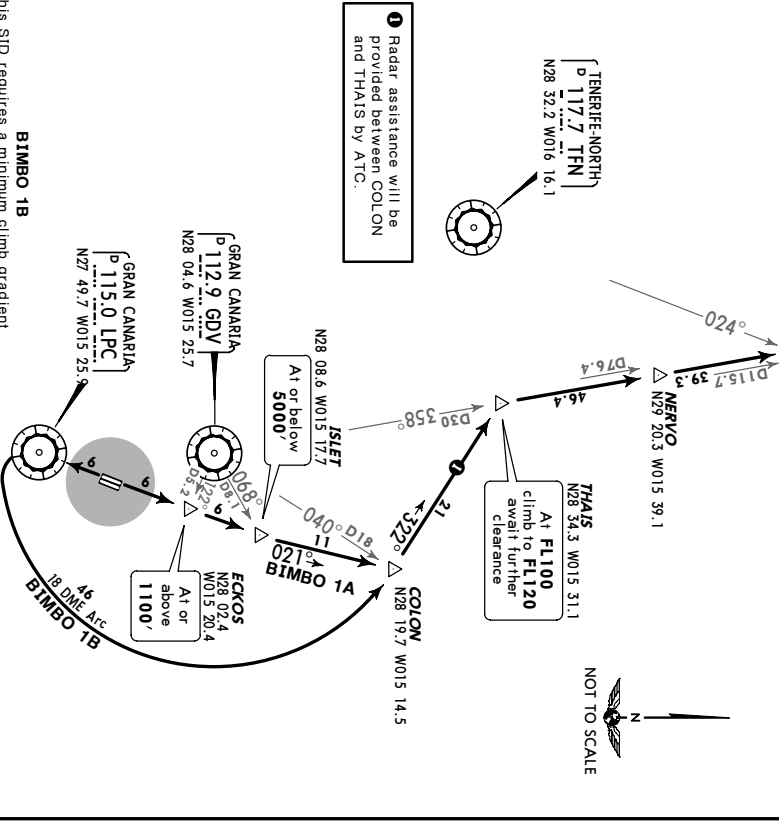
RWY	31L	03R	21R	21L
SID	ARACCO 1A	ARACCO 1B	ARACCO 1A	ARACCO 1B
RMW	03L	03R	21R	21L
ROUTING	CAT A & B: At ECKOS turn LEFT to GDV, GDV R-309 via ARTEM to TFN, TFN R-272 via TESEL to ARACCO. Maintain 6000', await further clearance. CAT C & D: At ECKOS continue climb to 3000', turn LEFT, intercept GDV R-309 via ARTEM to TFN, TFN R-272 via TESEL to ARACCO. Maintain 6000', await further clearance. At LPC turn LEFT, along GDV 18 DME arc, intercept GDV R-129 inbound to GDV, GDV R-309 via ARTEM to TFN, TFN R-272 via TESEL to ARACCO. Main-ain 6000', await further clearance.			

GCLP/LPA
GRAN CANARIA
 19 SEP 03
(10-3A) **EFF 2 OCT**
SID

Apv Elev 78' Trans level: By ATC Trans alt: 6000'



BIMBO ONE ALFA
 (BIMBO 1A) [BIMB1A]
BIMBO ONE BRAVO
 (BIMBO 1B) [BIMB1B]
RWYS 03L/R, 21R/L RNAV DEPARTURES
 RNAV EQUIPMENT REQUIRED



1 Radar assistance will be provided between COLON and THAIS by ATC.

This SID requires a minimum climb gradient of 304' per NM (5%) until leaving 1300'.

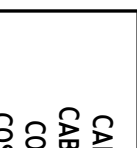
Grnd speed-KT	75	100	150	200	250	300
304' per NM	380	506	760	1013	1266	1519

SID	RWY		INITIAL CLIMB					
	03L	03R	380	506	760	1013	1266	1519
BIMBO 1A	03L	03R	To ECKOS.					
BIMBO 1B	21R	21L	Turn LEFT in VMC, then to ECKOS.					
BIMBO 1B	21L	21L	Turn RIGHT in VMC, then to LPC.					
BIMBO 1A	ROUTING							
BIMBO 1A	From ECKOS to ISLET, then to COLON, turn LEFT, 322° track to THAIS, turn RIGHT, maintain FL100 until intercepting GDV R-358, climb to FL120, await further clearance, proceed via NERVO and KASAS to BIMBO.							
BIMBO 1B	At LPC turn LEFT, along GDV R-167 to COLON, turn LEFT, 322° track to THAIS, turn RIGHT, maintain FL100 until intercepting GDV R-358, climb to FL120, await further clearance, proceed via NERVO and KASAS to BIMBO.							

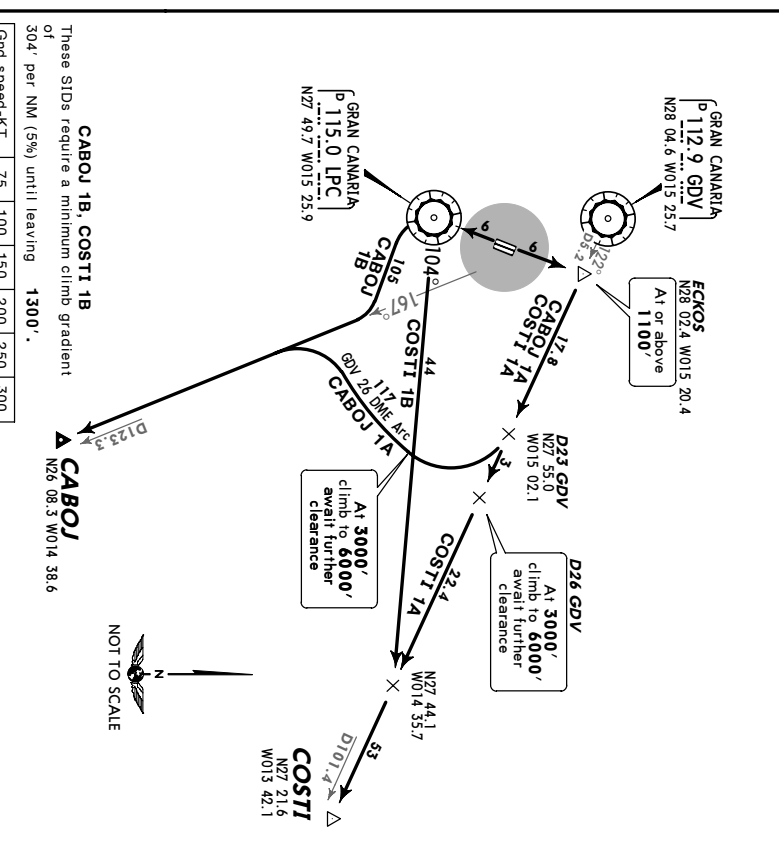
CHANGES: TFN frequency. © JEPPESEN SANDERSON, INC., 2002, 2003. ALL RIGHTS RESERVED.

GCLP/LPA
GRAN CANARIA
 13 FEB 04
(10-3B) **EFF 19 FEB**
SID

Apv Elev 78' Trans level: By ATC Trans alt: 6000'



CABOU ONE ALFA (CABOU 1A) [CABO1A]
CABOU ONE BRAVO (CABOU 1B) [CABO1B]
COSTI ONE ALFA (COSTI 1A) [COST1A]
COSTI ONE BRAVO (COSTI 1B) [COST1B]
RWYS 03L/R, 21R/L DEPARTURES



1 Radar assistance will be provided between COLON and THAIS by ATC.

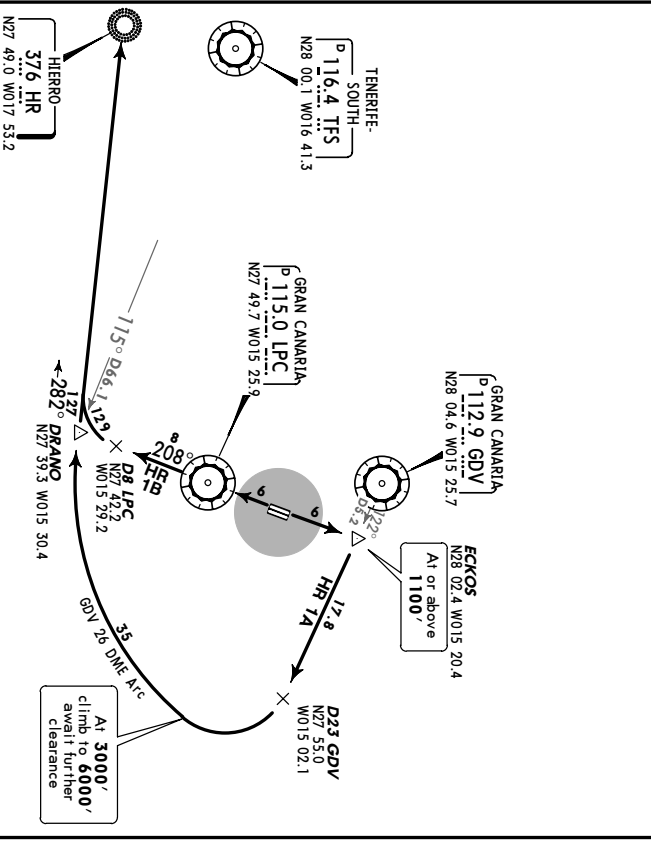
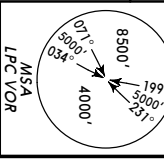
These SIDs require a minimum climb gradient of 304' per NM (5%) until leaving 1300'.

Grnd speed-KT	75	100	150	200	250	300
304' per NM	380	506	760	1013	1266	1519

SID	RWY		INITIAL CLIMB					
	03L	03R	380	506	760	1013	1266	1519
CABOU 1A	03L	03R	To ECKOS.					
CABOU 1B	21R	21L	Turn LEFT in VMC, then to ECKOS.					
CABOU 1B	21L	21L	Turn RIGHT in VMC, then to LPC.					
CABOU 1A	ROUTING							
CABOU 1A	At ECKOS turn RIGHT, intercept GDV R-122 to D23 GDV, turn RIGHT, maintain 3000' until intercepting GDV R-167 to CABOU.							
CABOU 1B	At LPC turn LEFT, intercept GDV R-167 to CABOU. Maintain 6000', await further clearance.							
COSTI 1A	At ECKOS turn RIGHT, intercept GDV R-122, maintain 3000' until D26 GDV, climb to 6000', await further clearance, proceed to COSTI.							
COSTI 1B	At LPC, LPC R-104, intercept GDV R-122 to COSTI. Maintain 6000', await further clearance.							

CHANGES: New format. © JEPPESEN SANDERSON, INC., 2004. ALL RIGHTS RESERVED.

HIERRO ONE ALFA (HR 1A)
 HIERRO ONE BRAVO (HR 1B)
 RWYS 03L/R, 21R/L DEPARTURES

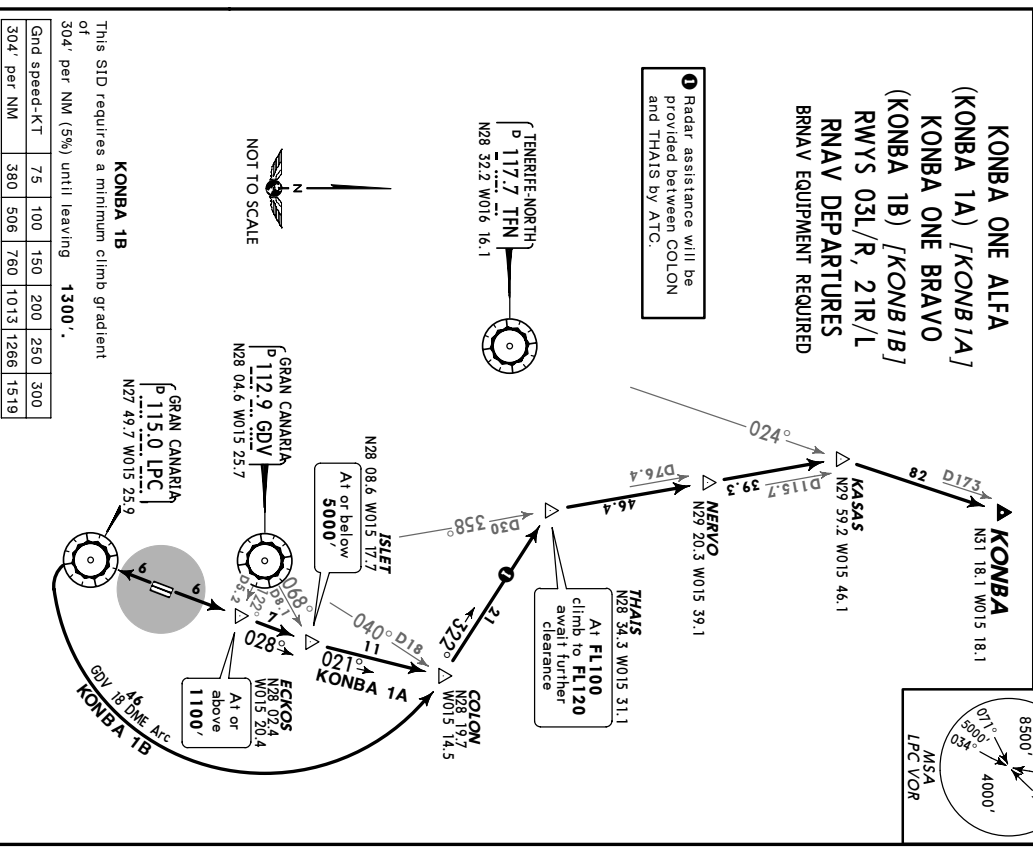
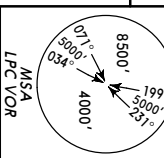


SID	RWY	INITIAL CLIMB
HR 1A	03L	To ECKOS.
	03R	Turn LEFT in VMc, then to ECKOS.
HR 1B	21R	To LPC.
	21L	Turn RIGHT in VMc, then to LPC.

ROUTING

HR 1A	At ECKOS turn RIGHT, intercept GDV R-122 to D23 GDV, turn RIGHT, maintain until intercepting GDV 26 DME arc, climb to 6000' , await further clearance, along arc to DRANO, turn LEFT, intercept 282° bearing to HR.
HR 1B	At LPC, LPC R-208 to D8 LPC, turn RIGHT, intercept 282° bearing to HR. Maintain 6000' , await further clearance.

KONBA ONE ALFA (KONBA 1A) [KONBIA]
 KONBA ONE BRAVO (KONBA 1B) [KONBIB]
 RWYS 03L/R, 21R/L
 RNAV DEPARTURES
 RNAV EQUIPMENT REQUIRED



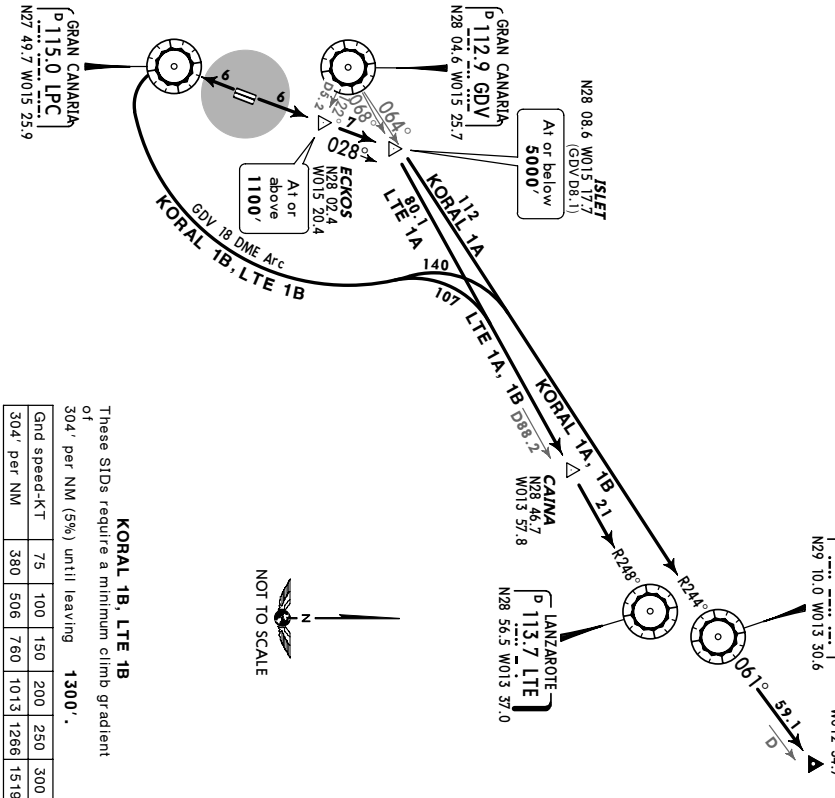
SID	RWY	INITIAL CLIMB
KONBA 1A	03L	To ECKOS.
	03R	Turn LEFT in VMc, then to ECKOS.
KONBA 1B	21R	To LPC.
	21L	Turn RIGHT in VMc, then to LPC.

ROUTING

KONBA 1A	From ECKOS to ISLET, then to COLON, turn LEFT, 322° track to THAIS, turn RIGHT, maintain FL100 until intercepting GDV R-358, climb to FL120 , await further clearance, proceed via NERVO to KASAS, turn RIGHT, intercept TRN R-024 to KONBA.
KONBA 1B	At LPC turn LEFT, along GDV 18 DME arc to COLON, turn LEFT, 322° track to THAIS, turn RIGHT, maintain FL100 until intercepting GDV R-358, climb to FL120 , await further clearance, proceed via NERVO to KASAS, turn RIGHT, intercept TRN R-024 to KONBA.

GCLP/LPA **JEPPesen GRAN CANARIA, CANARY IS**
GRAN CANARIA 13 FEB 04 **(10-3E)** **EFB 19 Feb 05** **SID**
 Apr Elev 78' Trans level: By ATC Trans alt: 6000'

KORAL ONE ALFA (KORAL 1A) [KORAL1A]
KORAL ONE BRAVO (KORAL 1B) [KORAL1B]
LANZAROTE ONE ALFA (LTE 1A)
LANZAROTE ONE BRAVO (LTE 1B)
RWYS 03L/R, 21R/L DEPARTURES



KORAL 1B, LTE 1B

These SIDs require a minimum climb gradient of 304' per NM (5%) until leaving 1300'.
 Gnd speed-KT 75 100 150 200 250 300
 304' per NM 380 506 760 1013 1266 1519

SID	RWY	INITIAL CLIMB
KORAL 1A	03L	To ECKOS.
LTE 1A	03R	Turn LEFT in VMC, then to ECKOS.
KORAL 1B	21R	To LPC.
LTE 1B	21L	Turn RIGHT in VMC, then to LPC.

ROUTING

KORAL 1A
 From ECKOS to ISLET, turn RIGHT, intercept GDV R-064 to LZR, LZR R-061 to KORAL. Maintain **FL100**, await further clearance.

KORAL 1B
 At LPC turn LEFT, along GDV R-064 to LZR, LZR R-061 to KORAL. Maintain **6000'**, await further clearance.

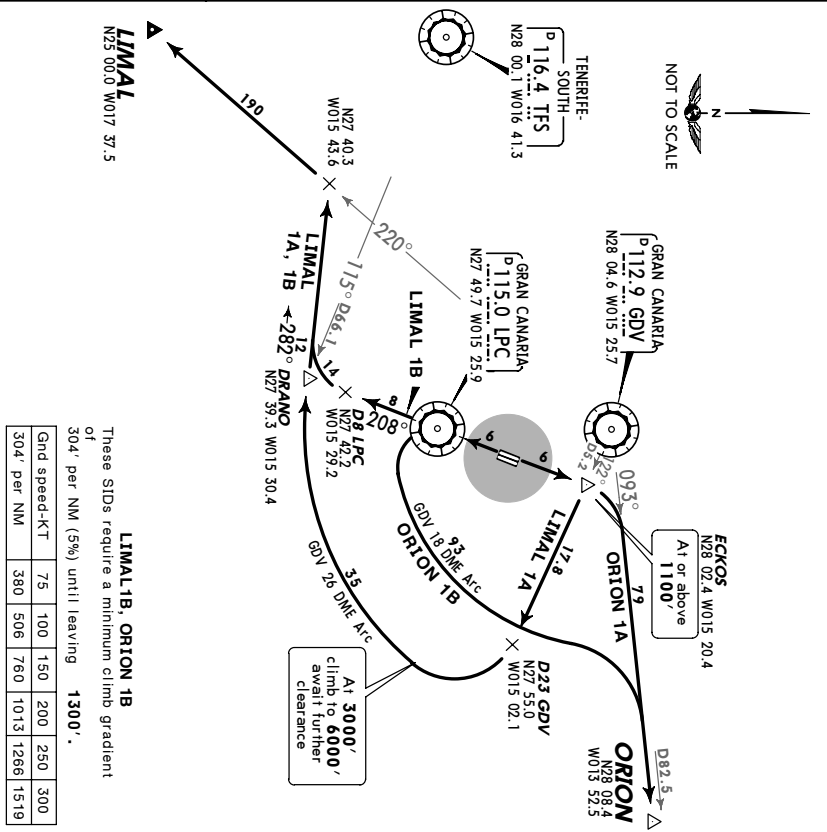
LTE 1A
 From ECKOS to ISLET, turn RIGHT, intercept GDV R-068 via CAINA to LTE. Maintain **FL100**, await further clearance.

LTE 1B
 At LPC turn LEFT, along GDV R-068 via CAINA to LTE. Maintain **6000'**, await further clearance.

CHANGES: SIDs LT 1A, 1B remained. LTE 1A, 1B & revised. © JEPPesen SANDERSON, INC., 2004. ALL RIGHTS RESERVED.

GCLP/LPA **JEPPesen GRAN CANARIA, CANARY IS**
GRAN CANARIA 13 FEB 04 **(10-3F)** **EFB 19 Feb 05** **SID**
 Apr Elev 78' Trans level: By ATC Trans alt: 6000'

LIMAL ONE ALFA (LIMAL 1A) [LIMAL1A]
LIMAL ONE BRAVO (LIMAL 1B) [LIMAL1B]
ORION ONE ALFA (ORION 1A) [ORIO1A]
ORION ONE BRAVO (ORION 1B) [ORIO1B]
RWYS 03L/R, 21R/L DEPARTURES



LIMAL 1B, ORION 1B

These SIDs require a minimum climb gradient of 304' per NM (5%) until leaving 1300'.
 Gnd speed-KT 75 100 150 200 250 300
 304' per NM 380 506 760 1013 1266 1519

SID	RWY	INITIAL CLIMB
LIMAL 1A	03L	To ECKOS.
ORION 1A	03R	Turn LEFT in VMC, then to ECKOS.
LIMAL 1B	21R	To LPC.
ORION 1B	21L	Turn RIGHT in VMC, then to LPC.

ROUTING

LIMAL 1A
 At ECKOS turn RIGHT, intercept GDV R-122 to D23 GDV, turn RIGHT, maintain **3000'** until intercepting GDV 26 DME arc, climb to **6000'**, await further clearance, along arc to DRANO, 282° track, intercept GDV R-220 to LIMAL.

LIMAL 1B
 At LPC, LPC R-208 to D8 LPC, turn RIGHT, intercept GDV R-220 to LIMAL. Maintain **6000'**, await further clearance.

ORION 1A
 At ECKOS turn RIGHT, intercept GDV R-093 to ORION. Maintain **5000'**, await further clearance.

ORION 1B
 At LPC turn LEFT, along GDV R-093 to ORION. Maintain **6000'**, await further clearance.

CHANGES: ORION SIDs established; ROYAL SIDs transf; new format. © JEPPesen SANDERSON, INC., 2004. ALL RIGHTS RESERVED.

Ap't Elev 78' Trans level: By ATC Trans alt: 6000'

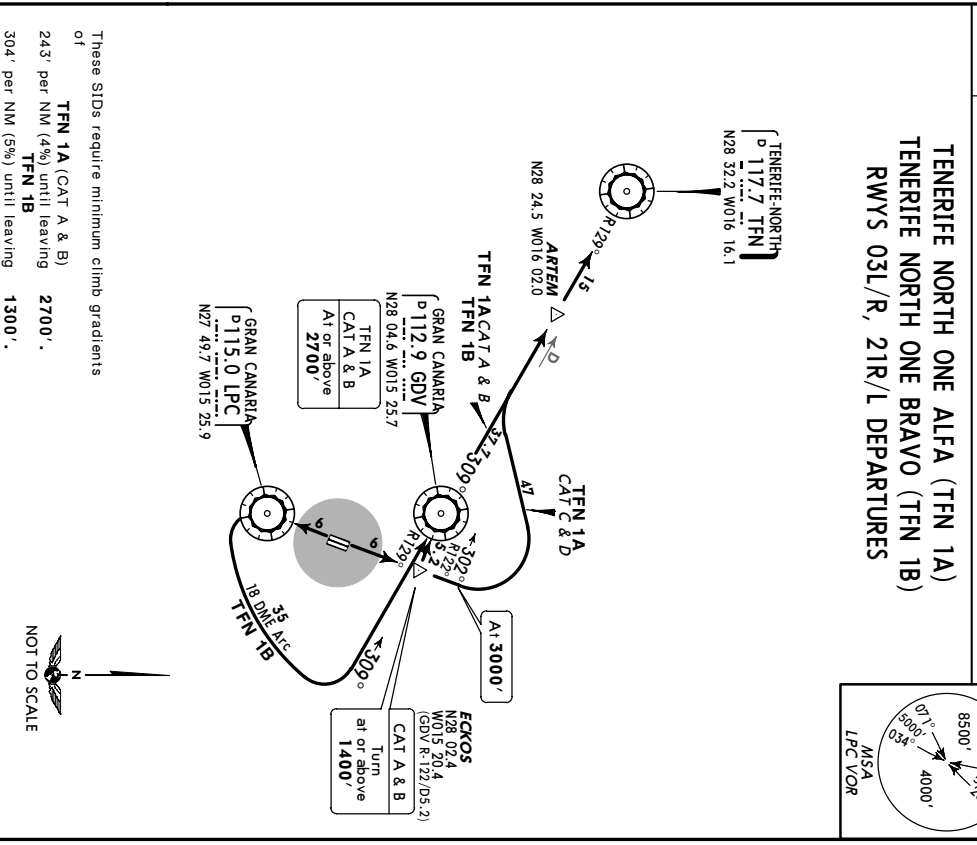
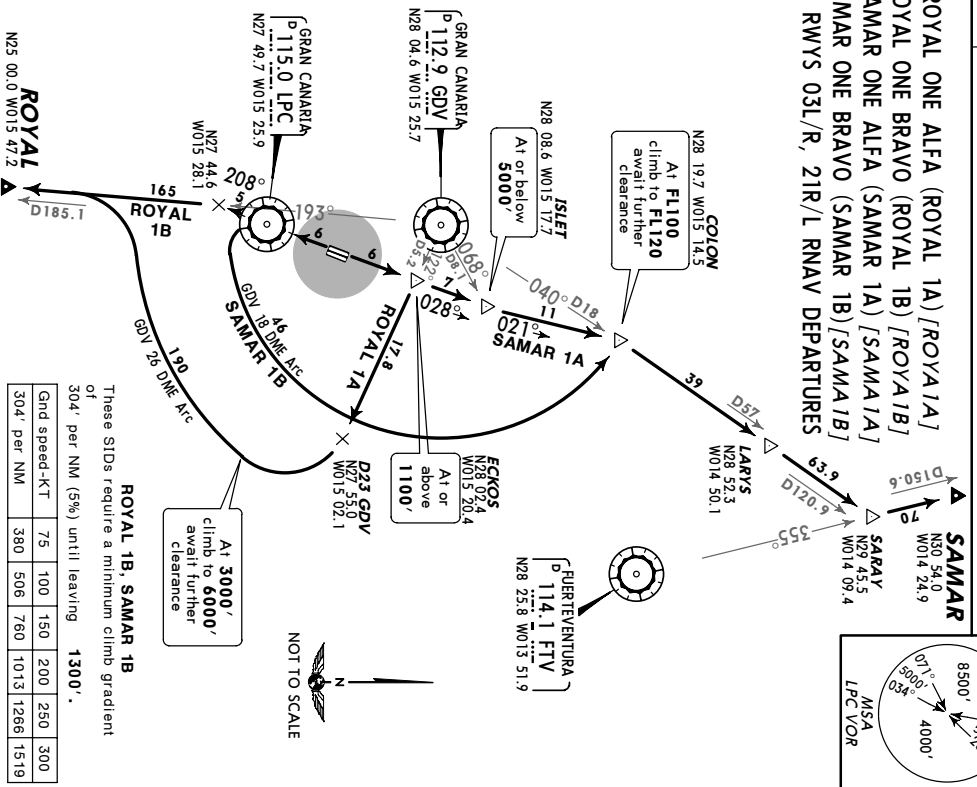
Ap't Elev 78' Trans level: By ATC Trans alt: 6000'

Jeppesen GRAN CANARIA, CANARY IS
SID

Jeppesen GRAN CANARIA, CANARY IS
SID

ROYAL ONE ALFA (ROYAL 1A) [ROYA1A]
ROYAL ONE BRAVO (ROYAL 1B) [ROYA1B]
SAMAR ONE ALFA (SAMAR 1A) [SAM1A]
SAMAR ONE BRAVO (SAMAR 1B) [SAM1B]
RWYS 03L/R, 21R/L RNAV DEPARTURES

TENERIFE NORTH ONE ALFA (TFN 1A)
TENERIFE NORTH ONE BRAVO (TFN 1B)
RWYS 03L/R, 21R/L DEPARTURES



ROYAL 1B, SAMAR 1B
These SIDs require a minimum climb gradient of 304' per NM (5%) until leaving 1300'.

TFN 1A (CAT A & B)
243' per NM (4%) until leaving 2700'.
TFN 1B
304' per NM (5%) until leaving 1300'.

SID	RWY	INITIAL CLIMB
ROYAL 1A	03L	To ECKOS.
SAMAR 1A	03R	Turn LEFT in VMC, then to ECKOS.
ROYAL 1B	21R	To LPC.
SAMAR 1B	21L	Turn RIGHT in VMC, then to LPC.
ROUTING		
ROYAL 1A		At ECKOS turn RIGHT, intercept GDV R-122 to D23 GDV, turn RIGHT, maintain 3000' until intercepting GDV 26 DME arc, climb to 6000', await further clearance, along arc, intercept GDV R-193 to ROYAL.
ROYAL 1B		At LPC, LPC R-208, intercept GDV R-193 to ROYAL. Maintain 6000', await further clearance.
SAMAR 1A		From ECKOS to ISLEF, then to COLON, turn RIGHT, maintain FL100 until intercepting GDV R-040, climb to FL120, await further clearance, proceed via LARYS to SARAY, turn LEFT, intercept FTV R-355 to SAMAR.
SAMAR 1B		At LPC turn LEFT, along GDV 18 DME arc to COLON, turn RIGHT, maintain FL100 until intercepting GDV R-040, climb to FL120, await further clearance, proceed via LARYS to SARAY, turn LEFT, intercept FTV R-355 to SAMAR.

SID	RWY	INITIAL CLIMB
TFN 1A	03L	To ECKOS.
TFN 1B	03R	Turn LEFT in VMC, then join SID from runway 03L.
TFN 1B	21R	To LPC.
TFN 1A	21L	Turn RIGHT in VMC, then join SID from runway 21R.
ROUTING		
TFN 1A		CAT A & B: Turn LEFT to GDV, GDV R-309 via ARTEM to TFN. Maintain 6000', await further clearance.
TFN 1B		CAT C & D: At ECKOS continue climb to 3000', turn LEFT, intercept GDV R-309 via ARTEM to TFN. Maintain 6000', await further clearance.
TFN 1B		Turn LEFT, along GDV 18 DME arc, intercept GDV R-129 inbound to GDV, continue on GDV R-309 via ARTEM to TFN. Maintain 6000', await further clearance.

CHANGES: ROYAL SIDs transferred; FTV INS coordinates; new format. © JEPPESSEN SANDERSON, INC., 2004. ALL RIGHTS RESERVED.

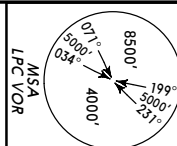
CHANGES: TFN frequency. © JEPPESSEN SANDERSON, INC., 2002, 2003. ALL RIGHTS RESERVED.

JEPPERSEN GRAN CANARIA, CANARY IS

19 SEP 03 (10-3J) EFF 23 OCT

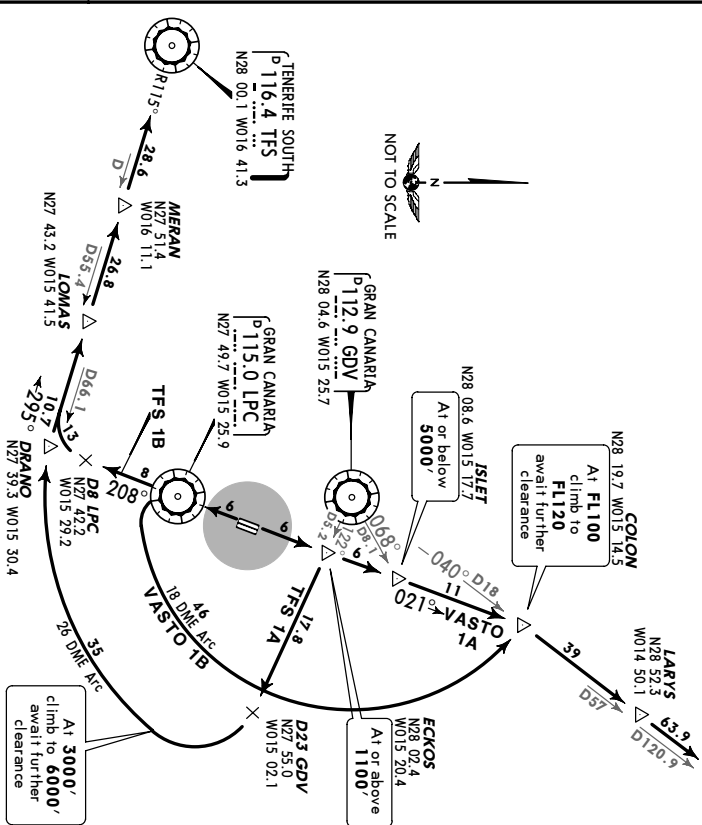
SID

Ap1 Elev 78' Trans level: By ATO Trans alt: 8000'



TENERIFE SOUTH ONE ALFA (TFS 1A)
 TENERIFE SOUTH ONE BRAVO (TFS 1B)
 VASTO ONE ALFA (VASTO 1A) [VASTIA]
 VASTO ONE BRAVO (VASTO 1B) [VASTIB]
 RWYS 03L/R, 21 R/L DEPARTURES

VASTO
 N29 30.6
 W013 34.4



TFS 1B, VASTO 1B
 These SIDs require a minimum climb gradient of 304' per NM (5%) until leaving 1300'.

Initial Climb	75	100	150	200	250	300
304' per NM	380	506	780	1013	1266	1519

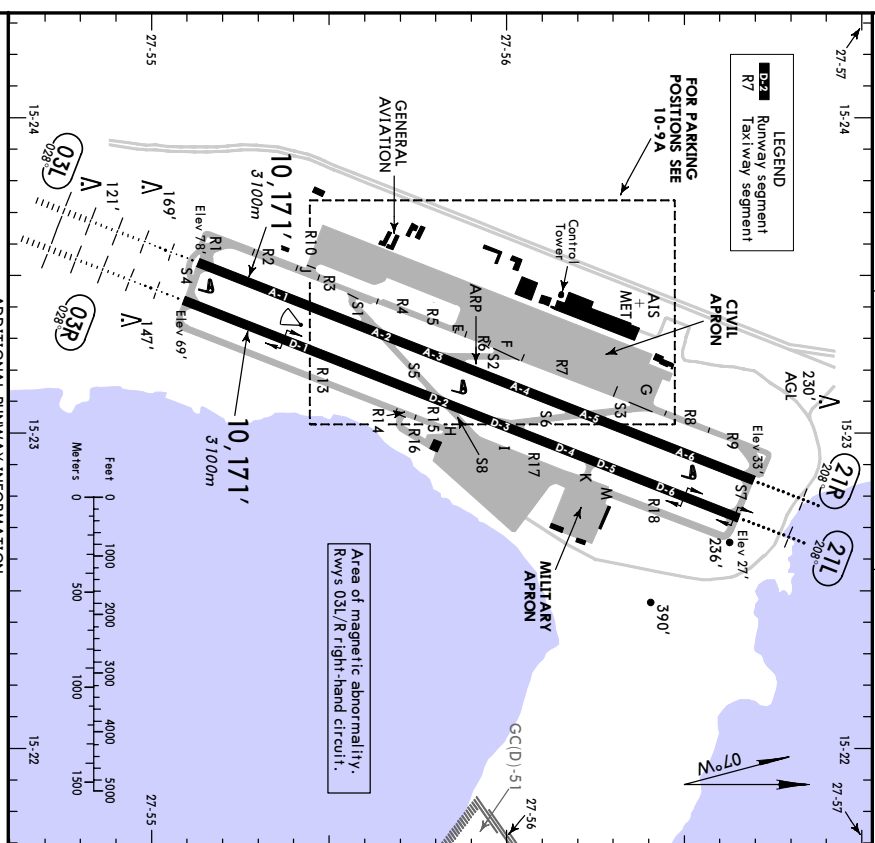
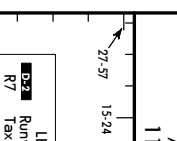
SID	Initial Climb
TFS 1A 03L	To ECKKOS.
VASTO 1A 03R	Turn LEFT in VMC, then join SID from runway 03L.
TFS 1B 21R	To LFC.
VASTO 1B 21L	Turn RIGHT in VMC, then join SID from runway 21R.
ROUTING	
TFS 1A	Turn RIGHT, intercept GDV R-122 to D23 GDV, turn RIGHT, maintain 3000' until intercepting GDV 26 DME arc, climb to 6000', await further clearance, along arc to DRANO, intercept TFS R-115 inbound via LOMAS and MERAN to TFS.
TFS 1B	Intercept LFC R-208 to D8 LFC, turn RIGHT, intercept TFS R-115 inbound via LOMAS and MERAN to TFS, maintain 6000', await further clearance.
VASTO 1A	Via ISLET to COLON, turn RIGHT, maintain FL100 until intercepting GDV R-040, climb to FL120, await further clearance, proceed via LARYS and SARAY to VASTO.
VASTO 1B	Turn LEFT, along GDV 18 DME arc to COLON, turn RIGHT, maintain FL100 until intercepting GDV R-040, climb to FL120, await further clearance, proceed via LARYS and SARAY to VASTO.

GCLP/LPA GRAN CANARIA, CANARY IS

17 DEC 04 (10-9) EFF 23 DEC

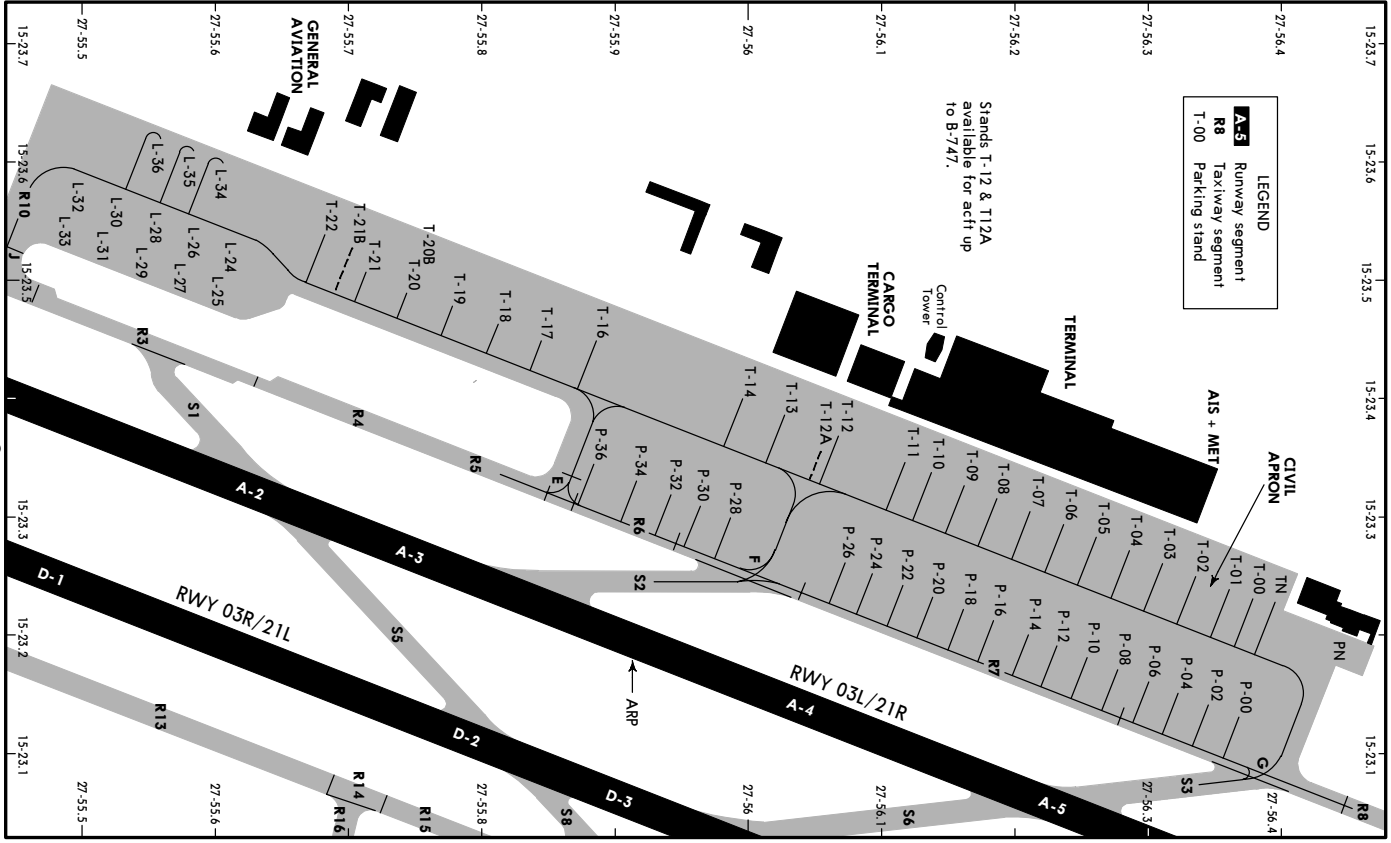
GRAN CANARIA

Ap1 Elev 78' Trans level: By ATO Trans alt: 8000'



Rwy	HR(L) (50m) CL (15m) ALS REL. PAPT (3.0°)	R/R	HR(L) (50m) CL (15m) ALS REL. PAPT (3.0°)	R/R
03L	HR(L) (50m) CL (15m) ALS REL. PAPT (3.0°)	R/R	HR(L) (50m) CL (15m) ALS REL. PAPT (3.0°)	R/R
03R	HR(L) (50m) CL (15m) ALS REL. PAPT (3.0°)	R/R	HR(L) (50m) CL (15m) ALS REL. PAPT (3.0°)	R/R
21L	HR(L) (50m) CL (15m) ALS REL. PAPT (3.0°)	R/R	HR(L) (50m) CL (15m) ALS REL. PAPT (3.0°)	R/R

JAR-OPS		TAKE-OFF I	
All Rwy's		All Rwy's	
LVP must be in Force		RCLM (DAY only)	
A	RI & CL	RCLM (DAY only)	NIL (DAY only)
B	200m	250m	
C	250m	400m	
D	250m	300m	500m



INS COORDINATES			
STAND No.	COORDINATES	STAND No.	COORDINATES
L-24 thru L-28	N27 55.6 W015 23.5	P-32, P-34	N27 55.9 W015 23.3
L-29	N27 55.5 W015 23.5	P-36	N27 55.9 W015 23.4
L-30	N27 55.5 W015 23.6	TN, T-00	N27 56.4 W015 23.2
L-31	N27 55.5 W015 23.5	T-01	N27 56.4 W015 23.3
L-32	N27 55.5 W015 23.6	T-02 thru T-05	N27 56.3 W015 23.3
L-33	N27 55.5 W015 23.5	T-06 thru T-09	N27 56.2 W015 23.3
L-34 thru L-36	N27 55.6 W015 23.6	T-10 thru T-12A	N27 56.1 W015 23.4
PN	N27 56.4 W015 23.2	T-13, T-14	N27 56.0 W015 23.4
P-00	N27 56.4 W015 23.1	T-16, T-17	N27 55.9 W015 23.5
P-02	N27 56.4 W015 23.2	T-18 thru T-20B	N27 55.8 W015 23.5
P-04 thru P-10	N27 56.3 W015 23.2	T-21, T-21B	N27 55.7 W015 23.5
P-12 thru P-18	N27 56.2 W015 23.2	T-22	N27 55.7 W015 23.6
P-20	N27 56.1 W015 23.2		
P-22 thru P-26	N27 56.1 W015 23.3		
P-28, P-30	N27 56.0 W015 23.3		

LANDING CLEARANCE BASED ON ANTICIPATED SEPARATION

Although the runway is temporarily occupied by other traffic, landing clearance may be issued to an arriving aircraft if the controller is satisfied that at the time the aircraft crosses the threshold of the runway in use, prescribed separation from the preceding aircraft will exist.
 When issuing a "Landing Clearance based on Anticipated Separation", ATC shall issue clearance to the succeeding aircraft with the following instructions:
 "...(Call sign) **BEHIND LANDING/DEPARTING (aircraft type) CLEARED TO LAND RUNWAY (number)**"
 This procedure may be used between sunrise and sunset.

LOW VISIBILITY PROCEDURES (LVP)

GENERAL:
 LVP will be applied when the meteorological minimum will be 500m or below.
 Tower will inform pilots about application of LVP.

GROUND MOVEMENT:
 Pilots will proceed to verify at every moment the aircraft position, checking that taxiing is being executed under total safety conditions. In case of being disoriented or in doubt, pilots will stop aircraft and immediately will notify Tower.
 When rwy's 03L/R in use, Twys S1, S2, S5 and S6 will be notified.
 When rwy's 21L/R in use, Twys S2, S3, S5 and S6 will be closed.

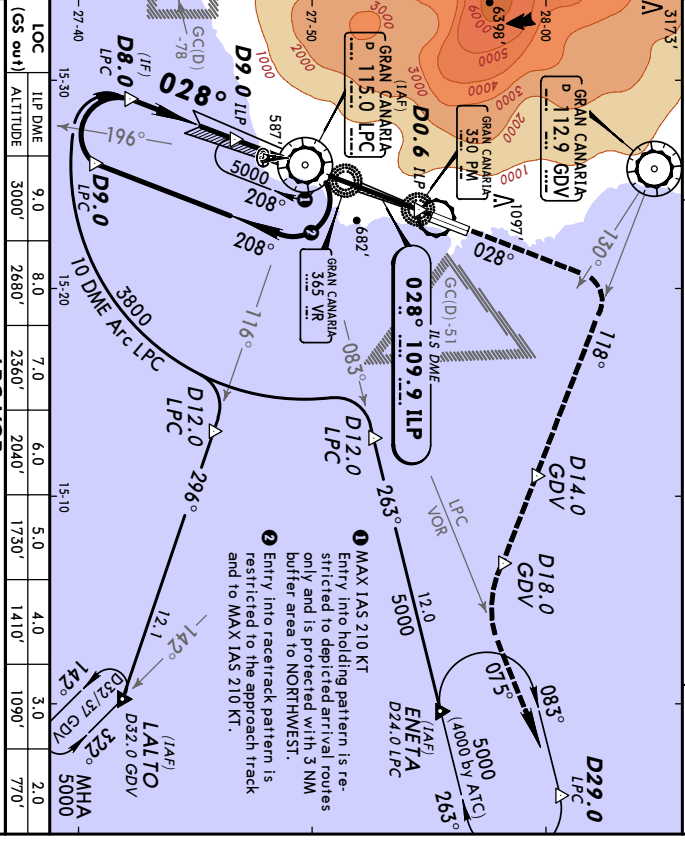
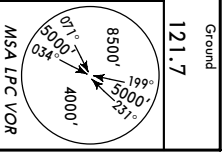
ARRIVAL:
 Aircraft, that have already landed, will notify runway vacated and taxiway used.
 At the apron entry, they must wait for the arrival of a Follow-me vehicle in order to be guided to the assigned stand.

DEPARTURES:
 Pilots will avoid requesting clearance for starting up, push-back or taxiing when the RVR values or the meteorological visibility are below the aerodrome operational minimum.

GC/LP/LPA GRAN CANARIA

18 MAR 05 (1-1) VOR DME ILS DME RWY 03L

ATIS	GRAN CANARIA Approach (R)	GRAN CANARIA Tower	Ground
118.6	124.3 120.9 121.3	118.3	121.7
LOC ILP	Final Apch Crs	GS D9.0 ILP 3000' (2922')	DA(H) Refer to Minimums RWY
109.9	028°		78' 78'



LOC	ILP DME	9.0'	8.0'	7.0'	6.0'	5.0'	4.0'	3.0'	2.0'
GS out	ALTITUDE	3000'	2680'	2360'	2040'	1730'	1410'	1090'	770'

LOC (GS out) & SIDESTEP TO RWY 03R	LOC (GS out) & SIDESTEP TO RWY 03L
DA(H): A: 320' (242'), C: 340' (262') B: 330' (252'), D: 350' (272')	DA(H): A: 320' (242'), C: 340' (262') B: 330' (252'), D: 350' (272')
MDA(H): 730' (652')	MDA(H): 730' (652')

MAP at D0.6 ILP	ILS STRAIGHT-IN LANDING RWY 03L	CIRCLE-TO-LAND
Full	ALS out	Not authorized West of airport

GRD speed-Kts	70	90	100	120	140	160
ILS GS 3,000' or	377	484	538	646	753	861
LOC Descent Gradient 5.2%						

MAP at D0.6 ILP	ILS STRAIGHT-IN LANDING RWY 03L	CIRCLE-TO-LAND
Full	ALS out	Not authorized West of airport

GRD speed-Kts	70	90	100	120	140	160
ILS GS 3,000' or	377	484	538	646	753	861
LOC Descent Gradient 5.2%						

MAP at D0.6 ILP	ILS STRAIGHT-IN LANDING RWY 03L	CIRCLE-TO-LAND
Full	ALS out	Not authorized West of airport

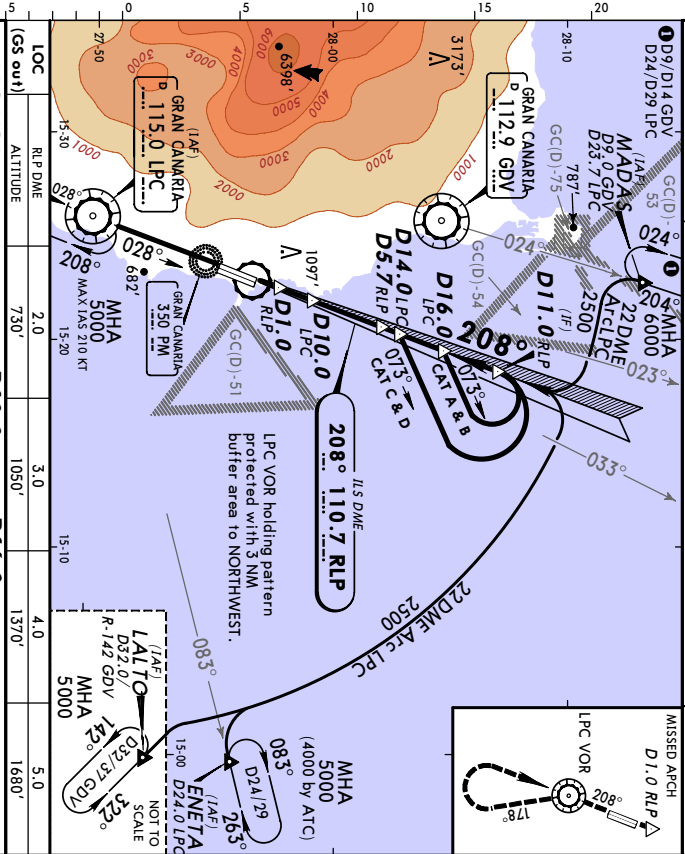
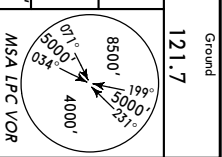
GRD speed-Kts	70	90	100	120	140	160
ILS GS 3,000' or	377	484	538	646	753	861
LOC Descent Gradient 5.2%						

MAP at D0.6 ILP	ILS STRAIGHT-IN LANDING RWY 03L	CIRCLE-TO-LAND
Full	ALS out	Not authorized West of airport

GC/LP/LPA GRAN CANARIA

18 MAR 05 (1-2) VOR DME ILS DME RWY 21R

ATIS	GRAN CANARIA Approach (R)	GRAN CANARIA Tower	Ground
118.6	124.3 120.9 121.3	118.3	121.7
LOC RLP	Final Apch Crs	GS D5.7 RLP 1900' (1867')	DA(H) Refer to Minimums RWY
110.7	208°		78' 33'



LOC	RLP DME	2.0'	3.0'	4.0'	5.0'
GS out	ALTITUDE	730'	1050'	1370'	1680'

LOC (GS out) & SIDESTEP TO RWY 21L	LOC (GS out) & SIDESTEP TO RWY 21R
DA(H): A: 277' (244'), C: 297' (264') B: 289' (256'), D: 307' (274')	DA(H): A: 277' (244'), C: 297' (264') B: 289' (256'), D: 307' (274')
MDA(H): 500' (467')	MDA(H): 500' (467')

MAP at D1.0 RLP	ILS STRAIGHT-IN LANDING RWY 21R	CIRCLE-TO-LAND
Full	ALS out	Not authorized West of airport

GRD speed-Kts	70	90	100	120	140	160
ILS GS 3,000' or	377	484	538	646	753	861
LOC Descent Gradient 5.2%						

MAP at D1.0 RLP	ILS STRAIGHT-IN LANDING RWY 21R	CIRCLE-TO-LAND
Full	ALS out	Not authorized West of airport

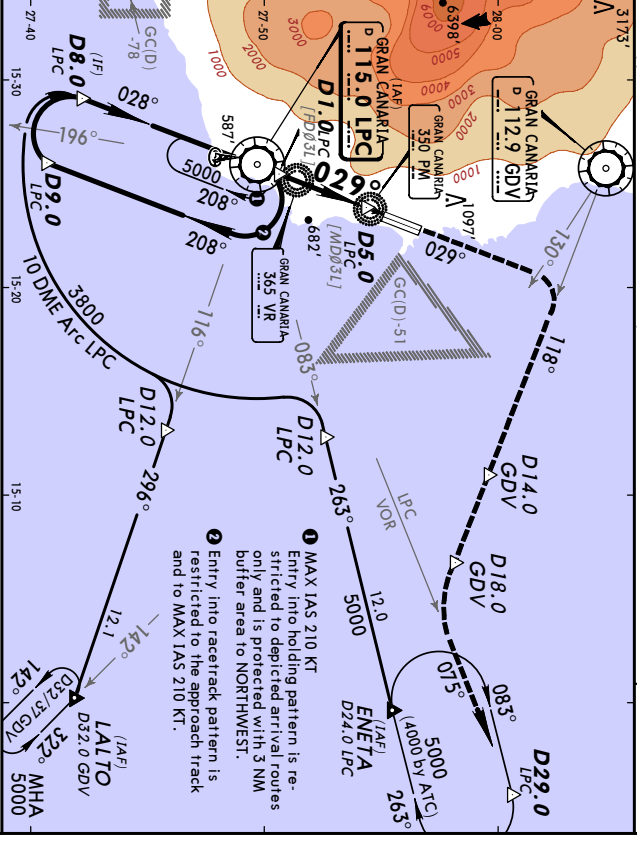
GRD speed-Kts	70	90	100	120	140	160
ILS GS 3,000' or	377	484	538	646	753	861
LOC Descent Gradient 5.2%						

MAP at D1.0 RLP	ILS STRAIGHT-IN LANDING RWY 21R	CIRCLE-TO-LAND
Full	ALS out	Not authorized West of airport

JEPPESEN GRAN CANARIA, CANARY IS
GCLP/LPA
 GRAN CANARIA
 18 MAR 05 (13-1)
VOR DME RWY 03L

ATIS	GRAN CANARIA Approach (R)	GRAN CANARIA Tower	Ground
118.6	124.3 120.9 121.3	118.3	121.7
VOR	Final Apch Crs	Minimum Alt MDA(H)	Apri Elev RWY
115.0	029° 1700' (1622')	1100' (1022')	78' 78'

MISSED APCH: Climb STRAIGHT AHEAD to R-130 GDV. Turn RIGHT (MAX IAS 185 KT) to Intercept R-118 GDV. Maintain 3000' until D14.0 GDV. At D18.0 GDV turn LEFT to Intercept R-075 LPC direct to D29.0 LPC climbing to 4000' and join holding.
 Alt Set: hPa
 RWY Elev: 3 Hpa
 Trans level: By ATC
 Final approach track offset 1° from runway centerline.
 MSA LPC VOR



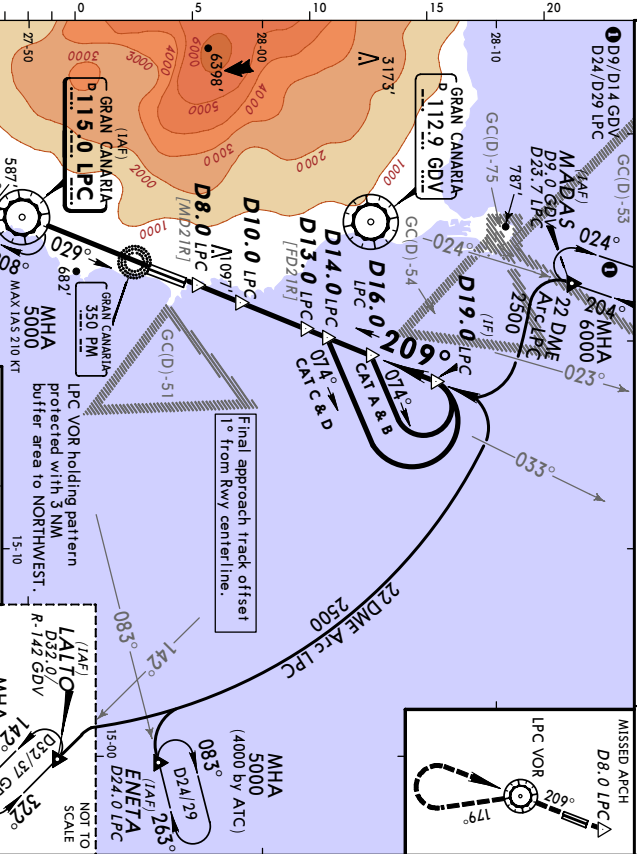
GRD speed-Kts	70	90	100	120	140	160
Descent Gradient 5.39% or Descant angle [3.09°]	383	492	547	656	765	875
MAP at D5.0 LPC						
STRAIGHT-IN LANDING RWY 03L VOR DME & SIDESTEP TO RWY 03R MDA(H) 1100' (1022')						
CIRCLE-TO-LAND						
Not authorized West of airport						
Max Kts	100	1300' (1222')	1500m			
Max Kts	100	1560' (1482')	1600m			
Max Kts	135	1660' (1582')	2400m			
Max Kts	180	1660' (1582')	3600m			

ATIS	GRAN CANARIA Tower	Ground	
118.6	118.3	121.7	
VOR	Final Apch Crs	Minimum Alt MDA(H)	Apri Elev RWY
115.0	029° 1700' (1622')	1100' (1022')	78' 78'

MISSED APCH: Climb STRAIGHT AHEAD to R-130 GDV. Turn RIGHT (MAX IAS 185 KT) to Intercept R-118 GDV. Maintain 3000' until D14.0 GDV. At D18.0 GDV turn LEFT to Intercept R-075 LPC direct to D29.0 LPC climbing to 4000' and join holding.
 Alt Set: hPa
 RWY Elev: 3 Hpa
 Trans level: By ATC
 Final approach track offset 1° from runway centerline.
 MSA LPC VOR

ATIS	GRAN CANARIA Approach (R)	GRAN CANARIA Tower	Ground
118.6	124.3 120.9 121.3	118.3	121.7
VOR	Final Apch Crs	Minimum Alt MDA(H)	Apri Elev RWY
115.0	029° 1800' (1767')	1200' (1167')	33' 33'

MISSED APCH: Climb STRAIGHT AHEAD to LPC VOR, then turn RIGHT to LPC VOR climbing to 5000' and join holding.
 Alt Set: hPa
 RWY Elev: 1 Hpa
 Trans level: By ATC
 Final approach track offset 1° from runway centerline.
 MSA LPC VOR



GRD speed-Kts	70	90	100	120	140	160
Descent Gradient 5.11% or Descant angle [2.93°]	363	466	518	622	726	829
MAP at D8.0 LPC						
STRAIGHT-IN LANDING RWY 21R VOR DME & SIDESTEP TO RWY 21L MDA(H) 1200' (1167')						
CIRCLE-TO-LAND						
Not authorized West of airport						
Max Kts	100	1500' (1422')	1500m			
Max Kts	100	1500' (1422')	1600m			
Max Kts	135	1540' (1462')	2400m			
Max Kts	180	1540' (1462')	3600m			

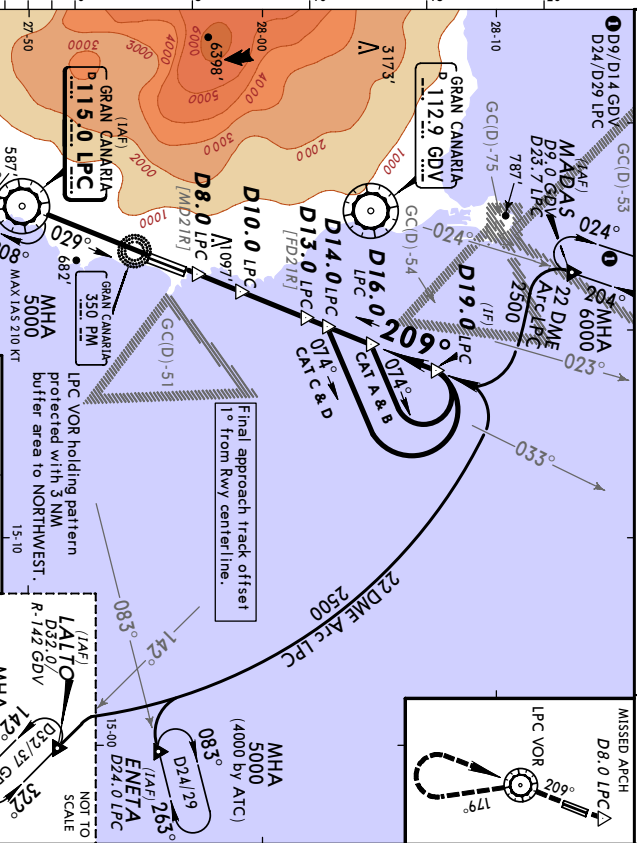
ATIS	GRAN CANARIA Tower	Ground	
118.6	118.3	121.7	
VOR	Final Apch Crs	Minimum Alt MDA(H)	Apri Elev RWY
115.0	029° 1800' (1767')	1200' (1167')	33' 33'

MISSED APCH: Climb STRAIGHT AHEAD to LPC VOR, then turn RIGHT to LPC VOR climbing to 5000' and join holding.
 Alt Set: hPa
 RWY Elev: 1 Hpa
 Trans level: By ATC
 Final approach track offset 1° from runway centerline.
 MSA LPC VOR

JEPPESEN GRAN CANARIA, CANARY IS
GCLP/LPA
 GRAN CANARIA
 18 MAR 05 (13-2)
VOR DME RWY 21R

ATIS	GRAN CANARIA Approach (R)	GRAN CANARIA Tower	Ground
118.6	124.3 120.9 121.3	118.3	121.7
VOR	Final Apch Crs	Minimum Alt MDA(H)	Apri Elev RWY
115.0	029° 1800' (1767')	1200' (1167')	33' 33'

MISSED APCH: Climb STRAIGHT AHEAD to LPC VOR, then turn RIGHT to LPC VOR climbing to 5000' and join holding.
 Alt Set: hPa
 RWY Elev: 1 Hpa
 Trans level: By ATC
 Final approach track offset 1° from runway centerline.
 MSA LPC VOR



GRD speed-Kts	70	90	100	120	140	160
Descent Gradient 5.11% or Descant angle [2.93°]	363	466	518	622	726	829
MAP at D8.0 LPC						
STRAIGHT-IN LANDING RWY 21R VOR DME & SIDESTEP TO RWY 21L MDA(H) 1200' (1167')						
CIRCLE-TO-LAND						
Not authorized West of airport						
Max Kts	100	1500' (1422')	1500m			
Max Kts	100	1500' (1422')	1600m			
Max Kts	135	1540' (1462')	2400m			
Max Kts	180	1540' (1462')	3600m			

ATIS	GRAN CANARIA Tower	Ground	
118.6	118.3	121.7	
VOR	Final Apch Crs	Minimum Alt MDA(H)	Apri Elev RWY
115.0	029° 1800' (1767')	1200' (1167')	33' 33'

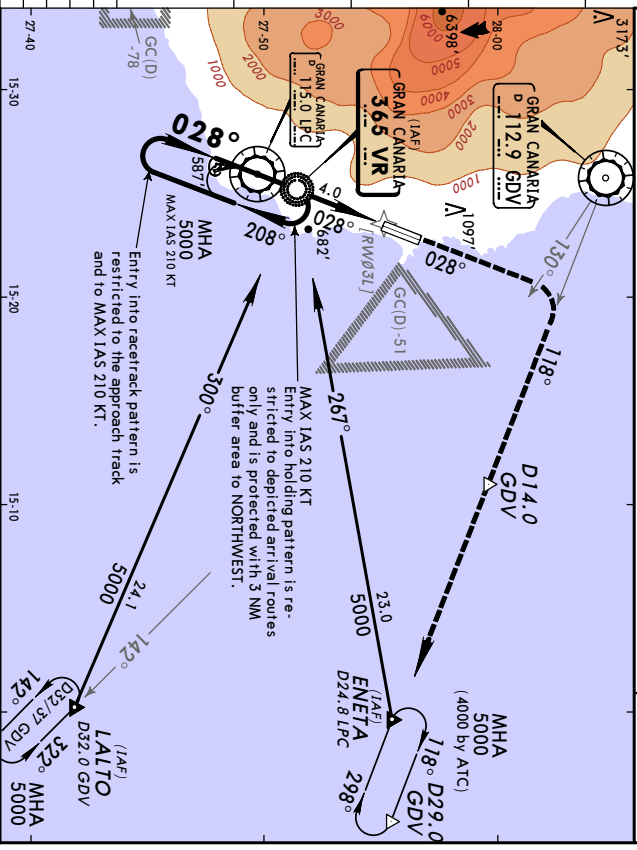
MISSED APCH: Climb STRAIGHT AHEAD to LPC VOR, then turn RIGHT to LPC VOR climbing to 5000' and join holding.
 Alt Set: hPa
 RWY Elev: 1 Hpa
 Trans level: By ATC
 Final approach track offset 1° from runway centerline.
 MSA LPC VOR

GCLP/LPA
GRAN CANARIA
 18 MAR 05 (16-1)
JEPPERSEN GRAN CANARIA, CANARY IS
NDB Rwy 03L

ATIS		GRAN CANARIA Approach (R)		GRAN CANARIA Tower		Ground	
118.6	124.3	120.9	121.3	118.3			121.7
Lctr VR	Final Apch Crs	Minimum Alt Lctr	MDA(H)	Appt Elev			
365	028°	1700' (1622')	1280' (1202')	78'			

MISSED APCH: Climb STRAIGHT AHEAD to R-130 GDV. Turn RIGHT (MAX IAS 185 KT) to intercept R-118 GDV. Maintain 3000' until D14.0 GDV. Climb to 4000' and join holding.

Alt Set: hPa Appt Elev: 3 hPa Trans level: By ATC Trans alt: 6000'



GRD speed-Kts		70	90	100	120	140	160		
Descent Gradient		6.48%	or 460	591	657	788	919	1051	
Lctr to Map		3.71°							
MAP to Map		4.01	3.26	2.34	2.24	2.00	1.43	1.30	

STRAGHT-IN LANDING Rwy 03L
 MDA(H) 1280' (1202')

NDB & SIDESTEP TO Rwy 03R

CIRCLE-TO-LAND
 Not authorized West of airport

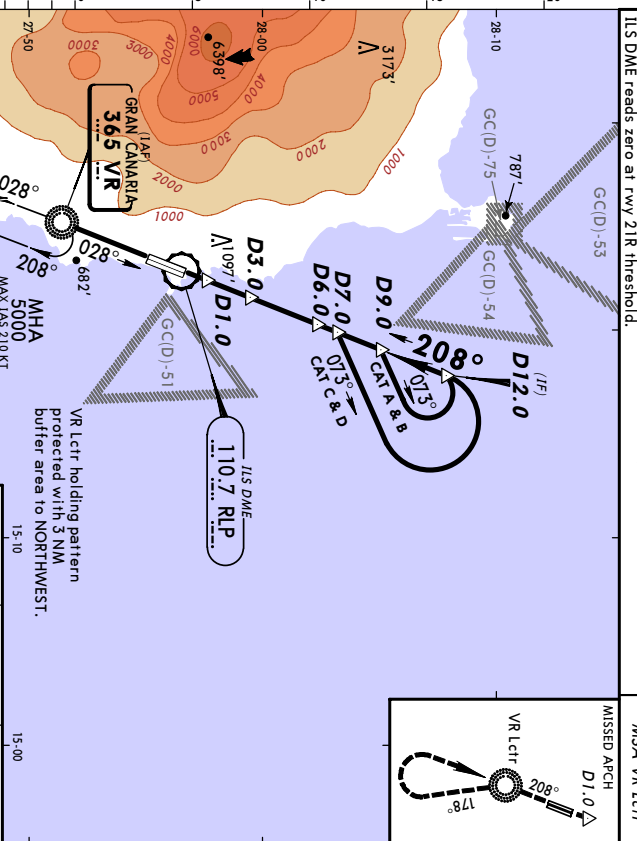
JAR OPS		STRAGHT-IN LANDING Rwy 03L		NDB & SIDESTEP TO Rwy 03R		CIRCLE-TO-LAND	
		MDA(H) 1280' (1202')		Not authorized West of airport			
		ALS out					
A	RVR 1200m					Max Kts	MDA(H)
B	RVR 1400m					100	1280' (1202')
C						135	1550' (1472')
D						180	1650' (1572')

GCLP/LPA
GRAN CANARIA
 18 MAR 05 (16-2)
JEPPERSEN GRAN CANARIA, CANARY IS
NDB DME Rwy 21R

ATIS		GRAN CANARIA Approach (R)		GRAN CANARIA Tower		Ground	
118.6	124.3	120.9	121.3	118.3			121.7
Lctr VR	Final Apch Crs	Minimum Alt Lctr	MDA(H)	Appt Elev			
365	208°	2000' (1967')	1300' (1267')	78' Rwy 33'			

MISSED APCH: Climb STRAIGHT AHEAD to Lctr, proceed on 178° from Lctr to 4500', then turn RIGHT to Lctr climbing to 5000' and join holding.

Alt Set: hPa Rwy Elev: 1 hPa Trans level: By ATC Trans alt: 6000'



GRD speed-Kts		70	90	100	120	140	160		
Descent Gradient		5.3%	376	483	537	644	751	859	
MAP at D1.0									

STRAGHT-IN LANDING Rwy 21R
 MDA(H) 1300' (1267')

NDB DME & SIDESTEP TO Rwy 21L

CIRCLE-TO-LAND
 Not authorized West of airport

JAR OPS		STRAGHT-IN LANDING Rwy 21R		NDB DME & SIDESTEP TO Rwy 21L		CIRCLE-TO-LAND	
		MDA(H) 1300' (1267')		Not authorized West of airport			
		ALS out					
A	RVR 1500m					Max Kts	MDA(H)
B						100	1500' (1422')
C	RVR 1800m					135	1500' (1422')
D	RVR 2000m					180	1540' (1462')