

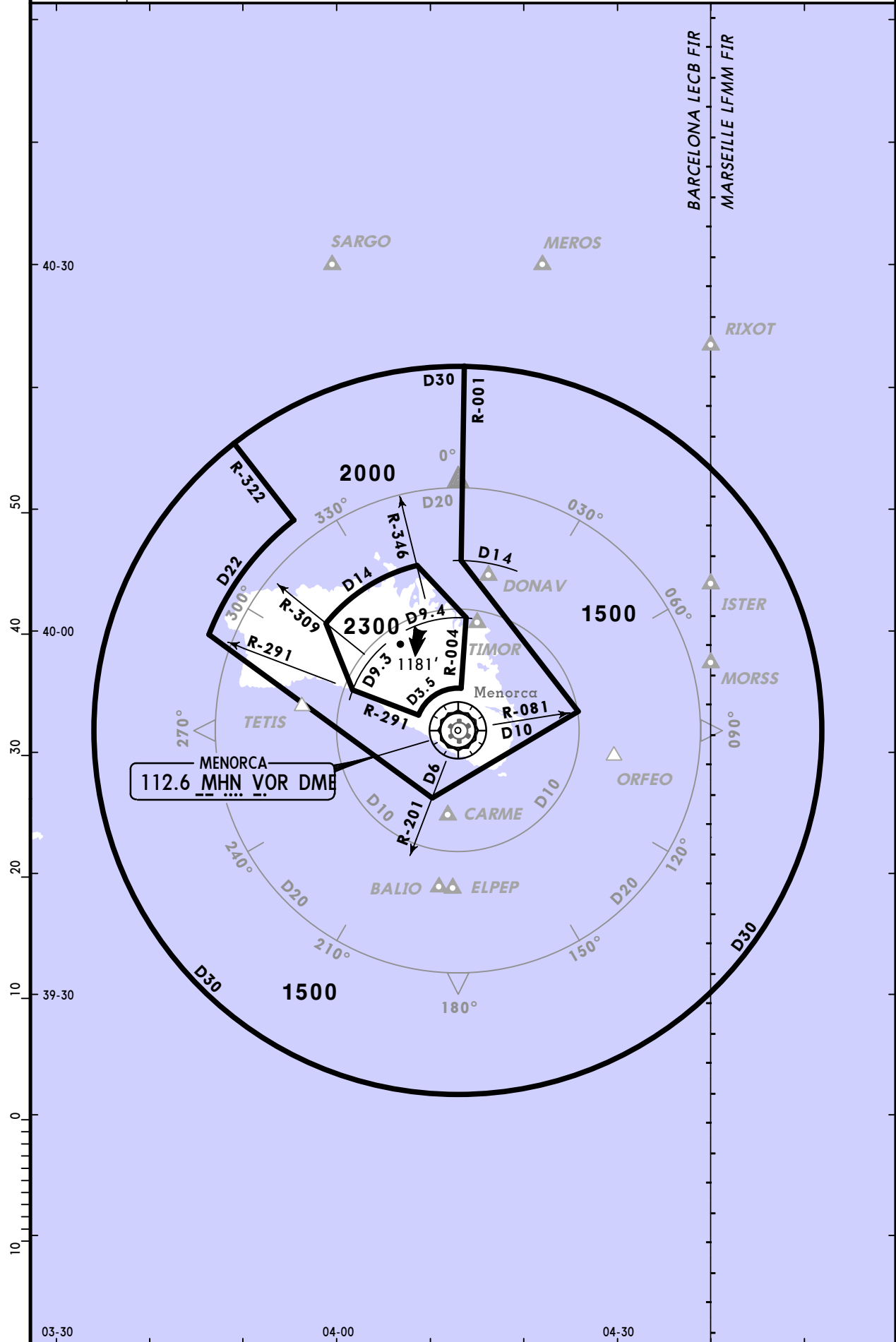
**LEMH/MAH**  
**MENORCA**

**JEPPESEN**  
2 JUL 10 **(10-1R)**

**MENORCA, SPAIN**  
**RADAR MINIMUM ALTITUDES**

**Apt Elev**  
**302'**

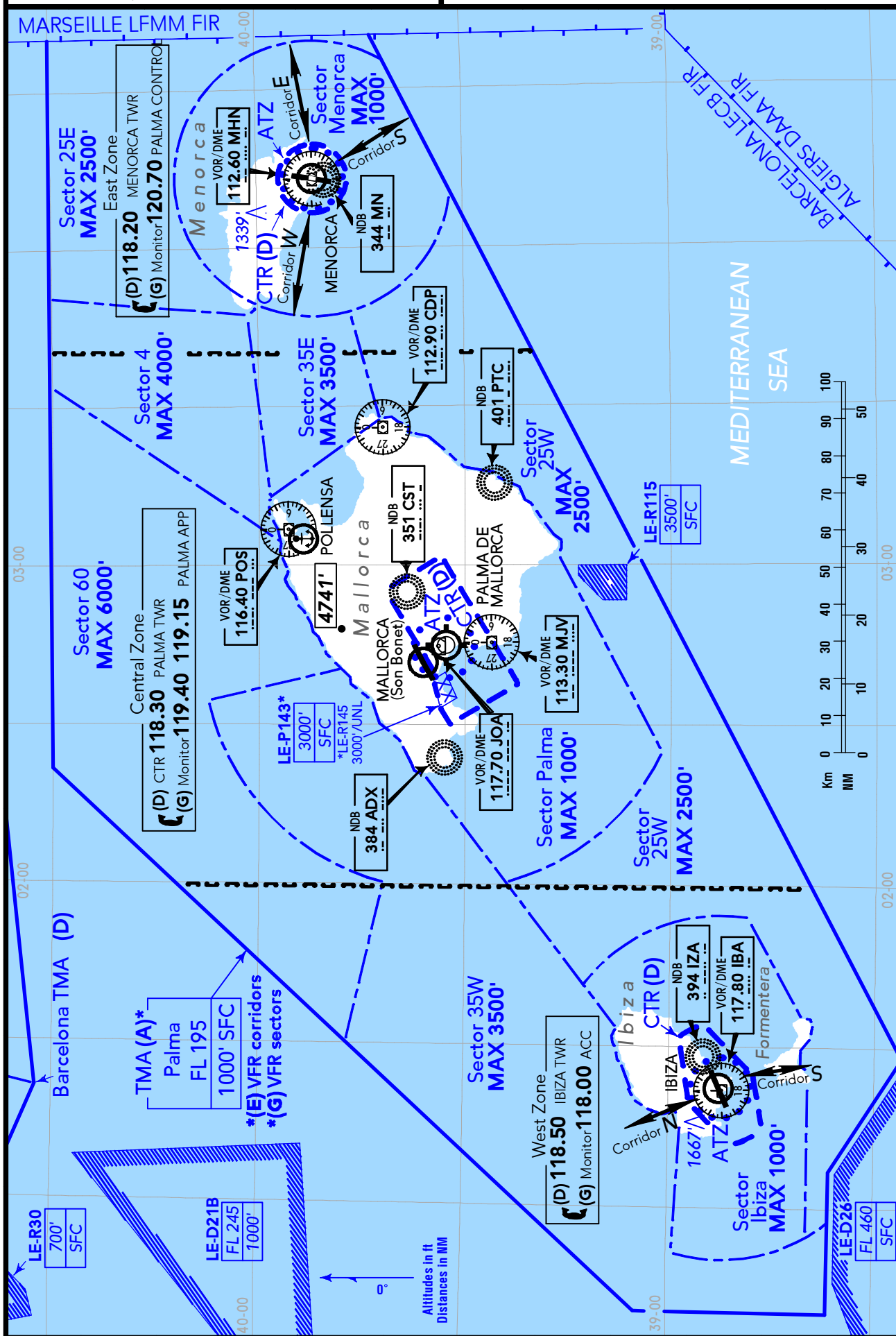
Alt Set: hPa Trans level: By ATC Trans alt: 6000'  
1. The published minimum altitudes integrate no correction for low temperatures.  
2. This chart should only be used for cross-checking of assigned altitudes while under radar control.



(FIS)

Balearic Islands, SPAIN

Refer to corresponding VACs.



**AREA**

**PALMA**

**SPAIN, Balearic Islands**

10-1VA

02 NOV 07



**VFR Procedures within Palma TMA**

**Note:** See also the corresponding Approach Charts of Ibiza, Menorca, Palma de Mallorca and Mallorca (Son Bonet) for the according CTR entry and exit procedures.

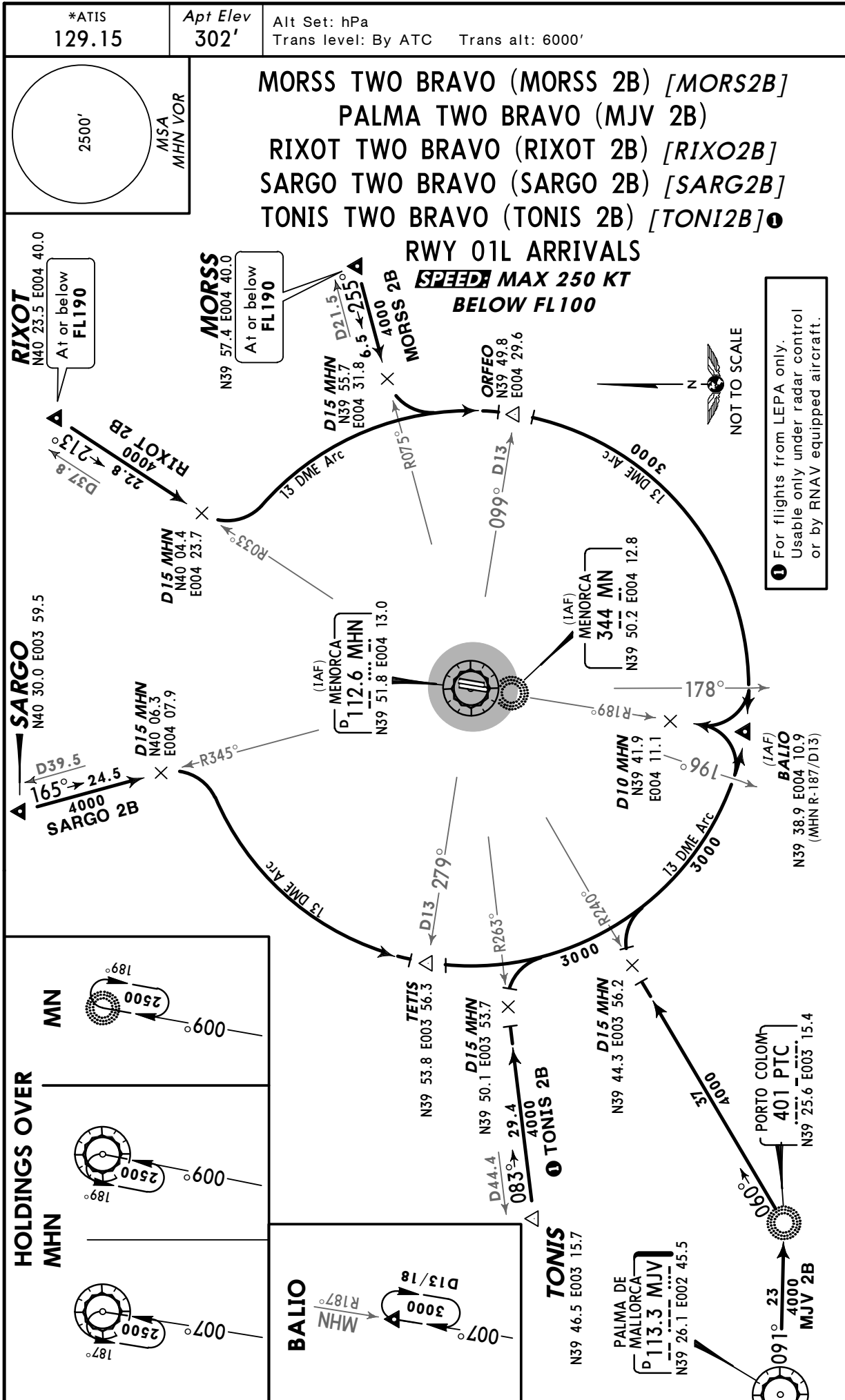
**Use of Transponder**

The use of SSR transponder is compulsory for all ACFT operating within Palma TMA.  
In case of transponder failure, Pilots have to request an ATC clearance.

ACFT shall contact or monitor on frequencies as depicted in boxes on Palma 10-1V.

**LEMH/MAH**  
**MENORCA**

**MENORCA, SPAIN**  
**STAR**

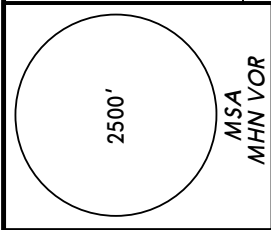


**LEMH/MAH**  
**MENORCA**

**JEPPESEN**  
4 SEP 09 **(10-2A)**

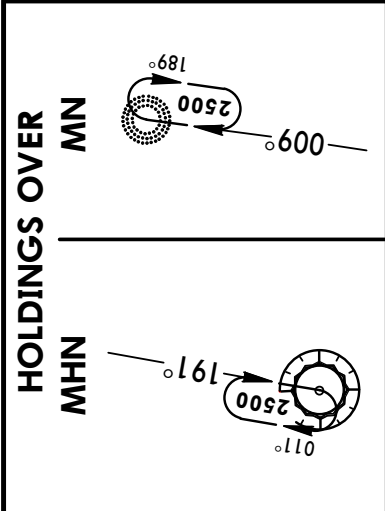
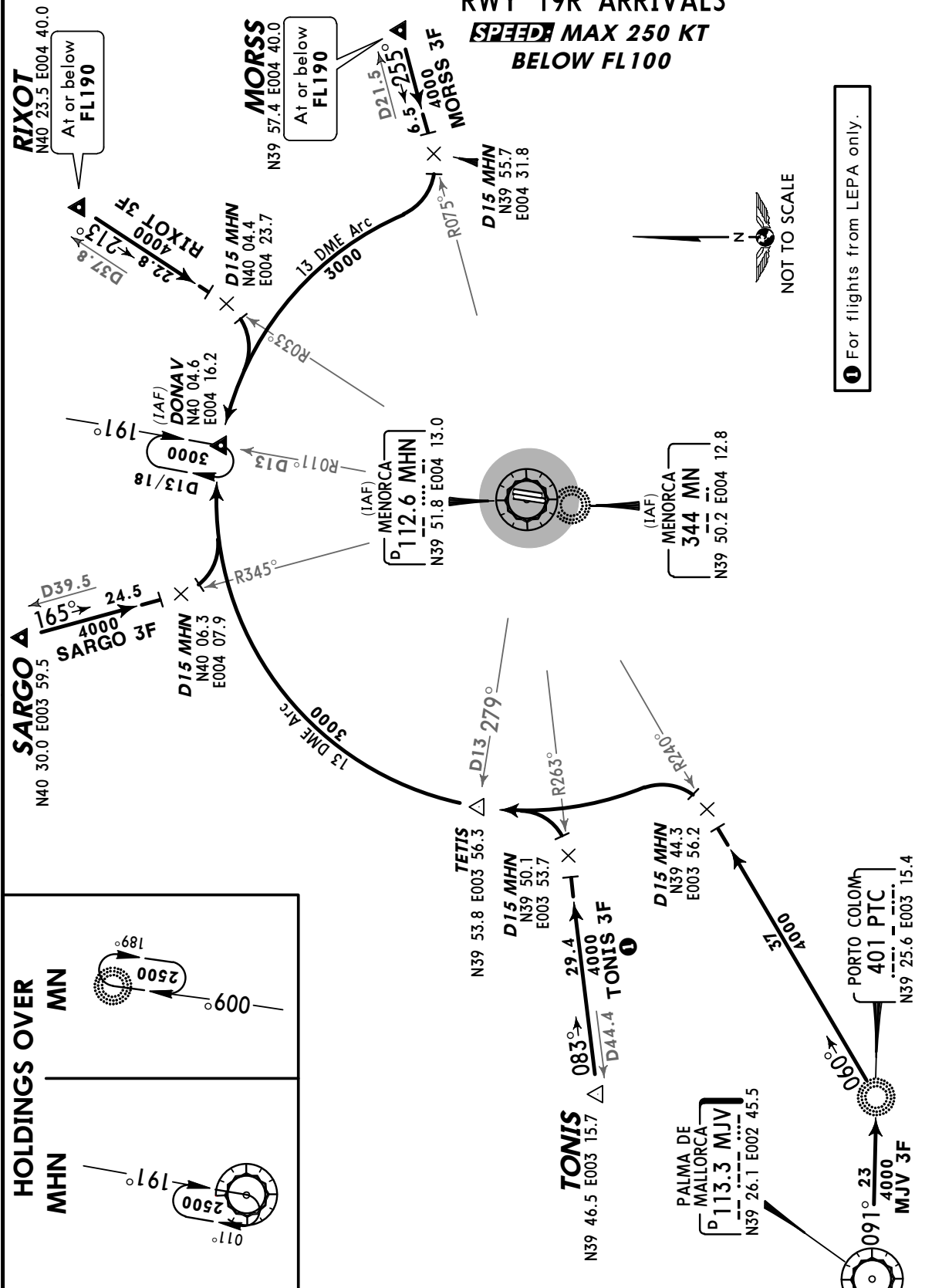
**MENORCA, SPAIN**  
**STAR**

*ATIS <b>129.15</b>	Apt Elev <b>302'</b>	Alt Set: hPa Trans level: By ATC    Trans alt: 6000'
------------------------	-------------------------	---



**MORSS THREE FOXTROT (MORSS 3F) [MORS3F]**  
**PALMA THREE FOXTROT (MJV 3F)**  
**RIXOT THREE FOXTROT (RIXOT 3F) [RIXO3F]**  
**SARGO THREE FOXTROT (SARGO 3F) [SARG3F]**  
**TONIS THREE FOXTROT (TONIS 3F) [TONI3F]** ①

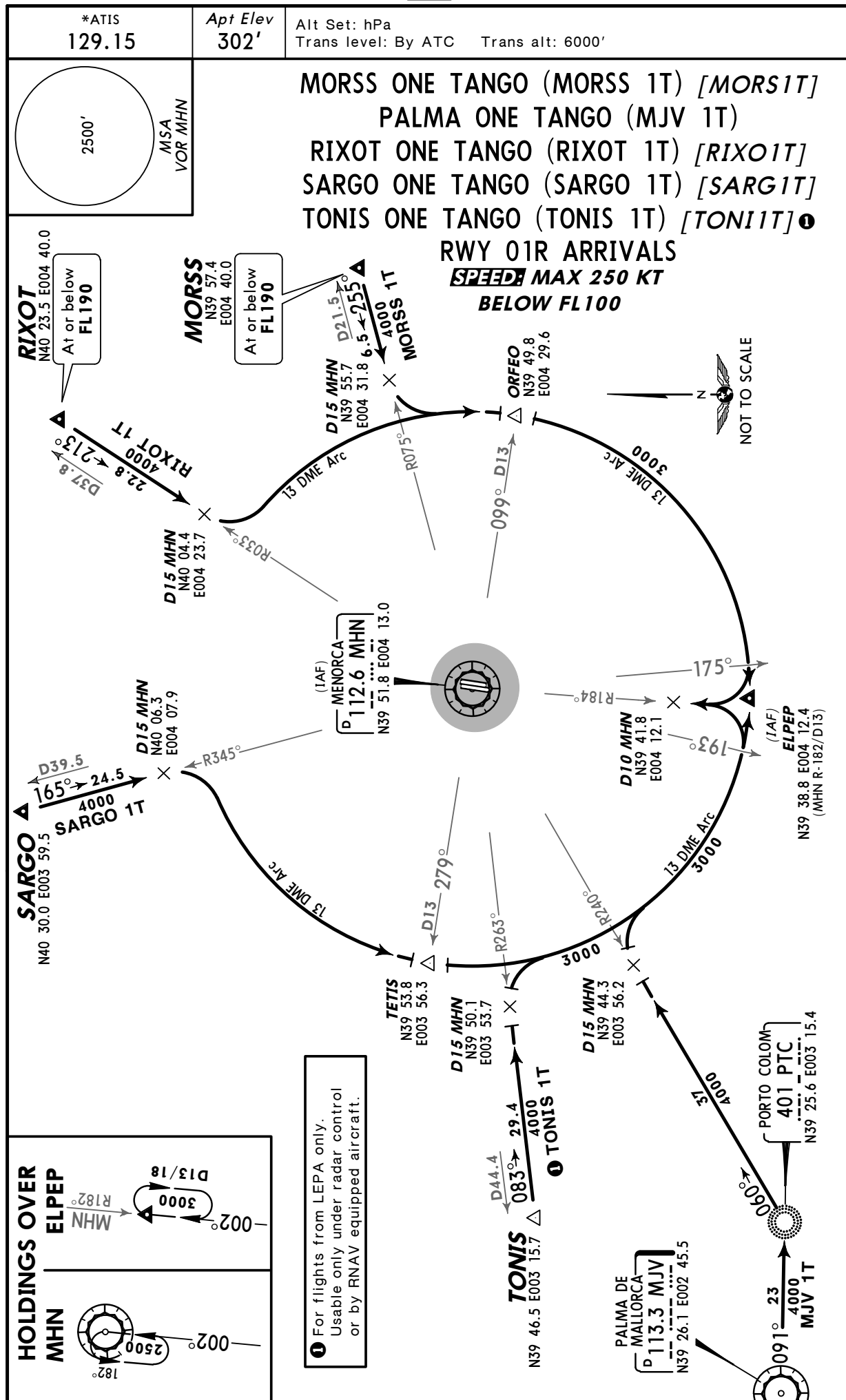
**RWY 19R ARRIVALS**  
**SPEEDS MAX 250 KT**  
**BELOW FL100**



**LEMH/MAH**  
**MENORCA**

**JEPPESSEN**  
4 SEP 09 **10-2B**

**MENORCA, SPAIN**  
**STAR**



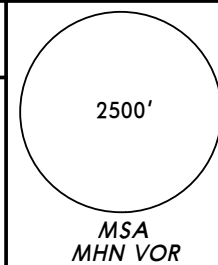
**LEMH/MAH**  
**MENORCA**

**JEPPESEN**  
 12 FEB 10 (10-3)

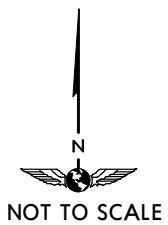
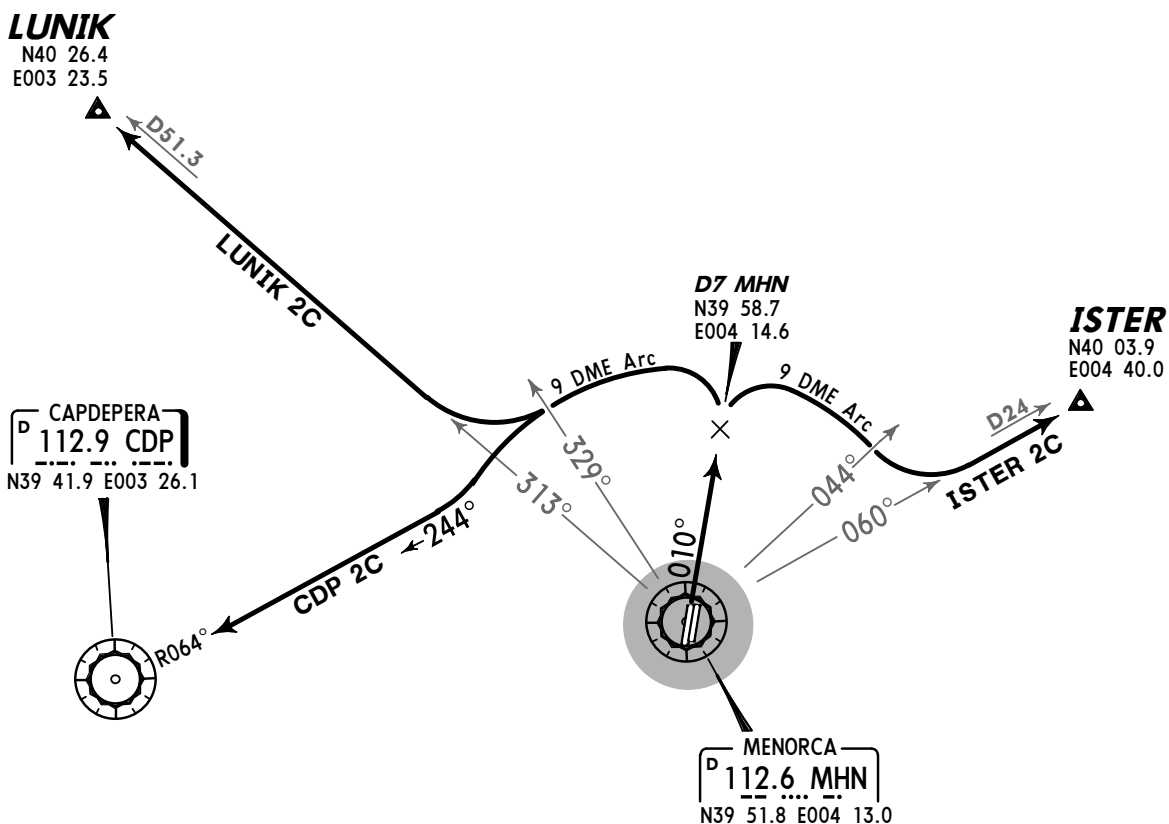
**MENORCA, SPAIN**  
**SID**

Apt Elev  
 302'

Trans level: By ATC Trans alt: 6000'



**CAPDEPERA TWO CHARLIE (CDP 2C)**  
**ISTER TWO CHARLIE (ISTER 2C)[ISTE2C]**  
**LUNIK TWO CHARLIE (LUNIK 2C)[LUNI2C]**  
**RWY 01L DEPARTURES**  
**~~SPEED~~ MAX 250 KT UNTIL LEAVING FL100**



SID	ROUTING
<b>CDP 2C ①</b>	Climb on MHN R-010 to D7 MHN, turn LEFT, along MHN 9 DME arc, intercept CDP R-064 inbound to CDP.
<b>ISTER 2C</b>	Climb on MHN R-010 to D7 MHN, turn RIGHT, along MHN 9 DME arc, intercept MHN R-060 to ISTER.
<b>LUNIK 2C ②</b>	Climb on MHN R-010 to D7 MHN, turn LEFT, along MHN 9 DME arc, intercept MHN R-313 to LUNIK.

① For flights to LEPA only.  
 ② For flights to LEBL & LERS only; during winter for flights to Spain.

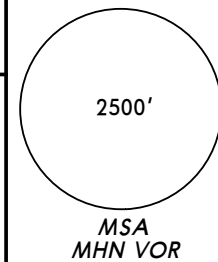
**LEMH/MAH**  
**MENORCA**

**JEPPESEN**  
 12 FEB 10 (10-3A)

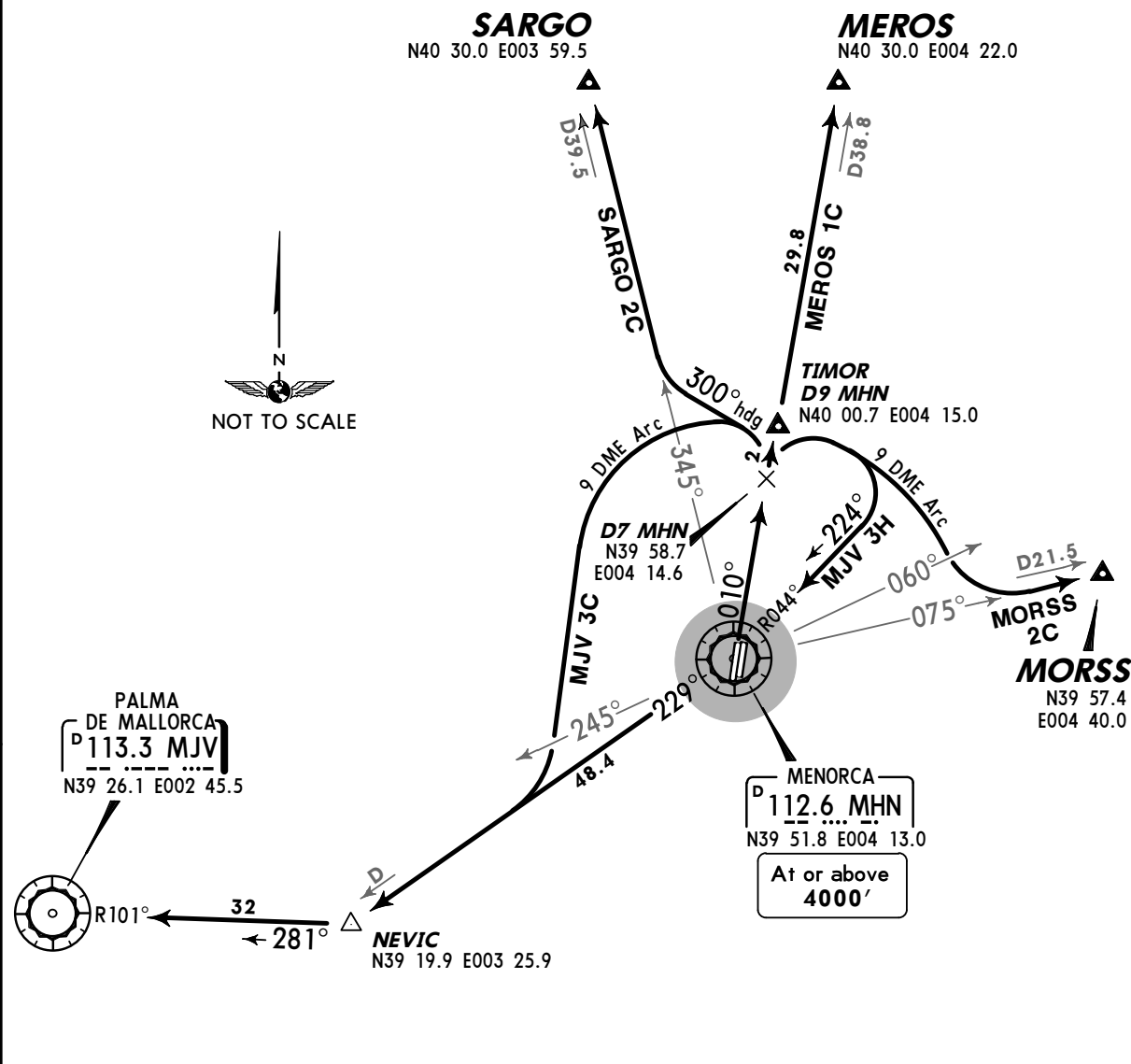
**MENORCA, SPAIN**  
**SID**

Apt Elev  
 302'

Trans level: By ATC Trans alt: 6000'



**MEROS ONE CHARLIE (MEROS 1C) [MERO1C]**  
**MORSS TWO CHARLIE (MORSS 2C) [MORS2C]**  
**PALMA THREE CHARLIE (MJV 3C)**  
**PALMA THREE HOTEL (MJV 3H)**  
**SARGO TWO CHARLIE (SARGO 2C) [SARG2C]**  
**RWY 01L DEPARTURES**  
***SPEED* MAX 250 KT UNTIL LEAVING FL 100**



SID	ROUTING
<b>MEROS 1C ①</b>	Climb on MHN R-010 via TIMOR to MEROS.
<b>MJV 3C ②</b>	Climb on MHN R-010 to D7 MHN, turn LEFT, along MHN 9 DME arc, intercept MHN R-229 to NEVIC, turn RIGHT, intercept MJV R-101 inbound to MJV.
<b>MJV 3H ②</b>	Climb on MHN R-010 to D7 MHN, turn RIGHT, along MHN 9 DME arc, intercept MHN R-044 inbound to MHN, MHN R-229 to NEVIC, turn RIGHT, intercept MJV R-101 inbound to MJV.
<b>MORSS 2C</b>	Climb on MHN R-010 to D7 MHN, turn RIGHT, along MHN 9 DME arc, intercept MHN R-075 to MORSS.
<b>SARGO 2C ③</b>	Climb on MHN R-010 to D7 MHN, turn LEFT, 300° heading, intercept MHN R-345 to SARGO.

- ① Mandatory for flights to LEGE.
- ② Mandatory for flights via LFBB FIR/UIR.
- ③ For flights to French aerodromes south of N44° parallel.

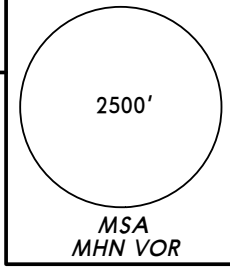


**LEMH/MAH**  
**MENORCA**

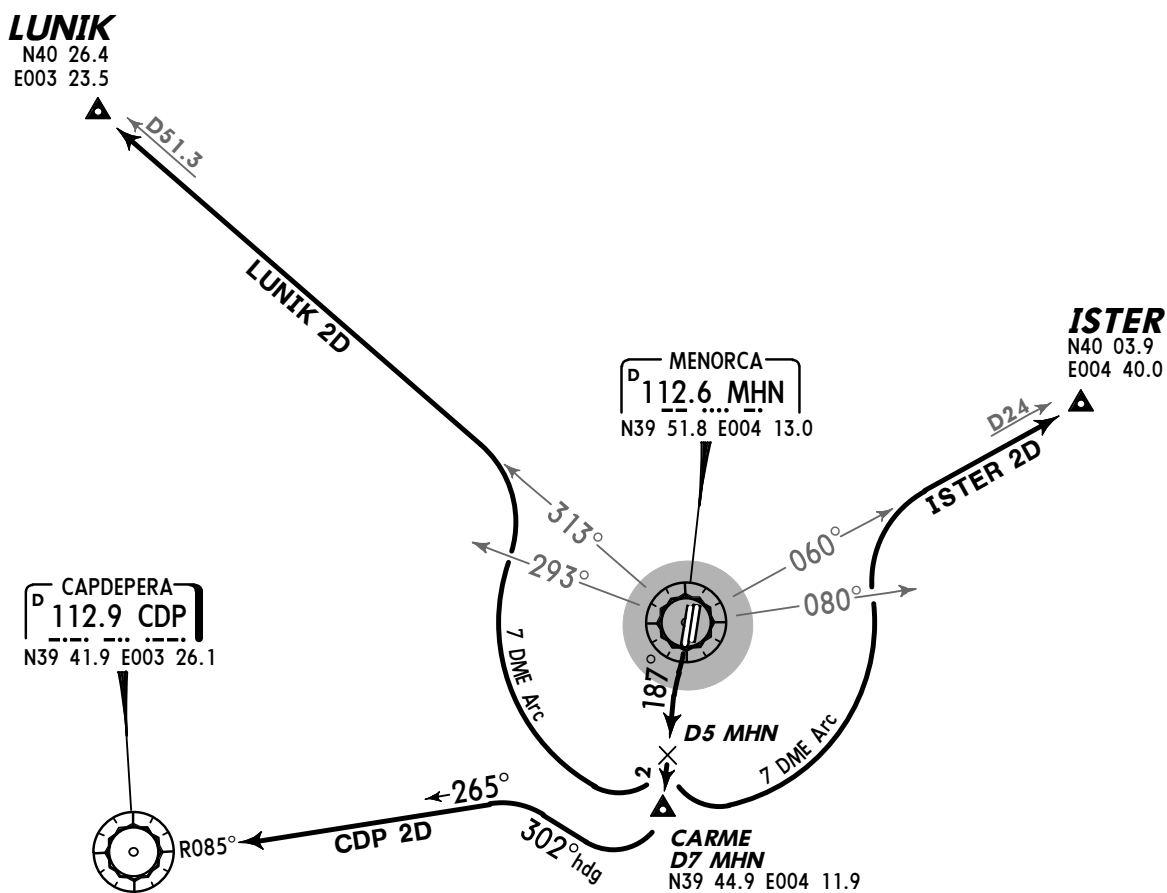
**JEPPESEN**  
 12 FEB 10 (10-3B)

**MENORCA, SPAIN**  
**SID**

Apt Elev 302'      Trans level: By ATC      Trans alt: 6000'



**CAPDEPERA TWO DELTA (CDP 2D)**  
**ISTER TWO DELTA (ISTER 2D) [ISTE2D]**  
**LUNIK TWO DELTA (LUNIK 2D) [LUNI2D]**  
**RWY 19R DEPARTURES**  
**~~SPEED~~ MAX 250 KT UNTIL LEAVING FL100**



SID	ROUTING
<b>CDP 2D</b> ①	Climb on MHN R-187 to CARME, turn RIGHT, 302° heading, intercept CDP R-085 inbound to CDP.
<b>ISTER 2D</b>	Climb on MHN R-187 to D5 MHN, turn LEFT, along MHN 7 DME arc, intercept MHN R-060 to ISTER.
<b>LUNIK 2D</b> ②	Climb on MHN R-187 to D5 MHN, turn RIGHT, along MHN 7 DME arc, intercept MHN R-313 to LUNIK.

① For flights to LEPA only.  
 ② For flights to LEBL & LERS only; during winter for flights to Spain.

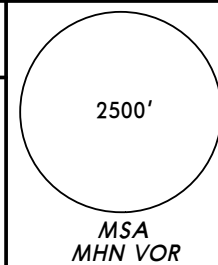
**LEMH/MAH**  
**MENORCA**

**JEPPESEN**  
 12 FEB 10 **(10-3C)**

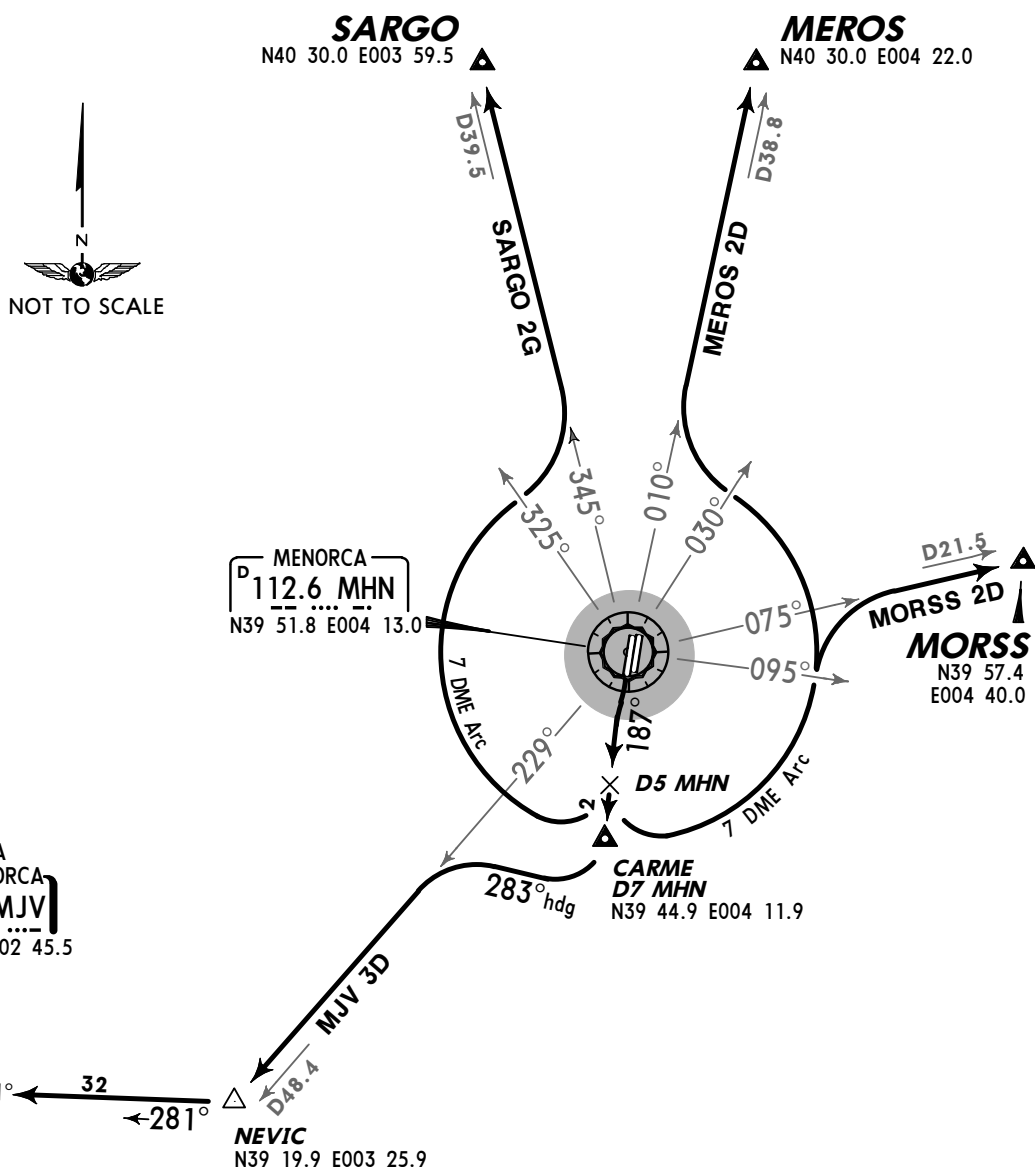
**MENORCA, SPAIN**  
**SID**

Apt Elev  
 302'

Trans level: By ATC Trans alt: 6000'



**MEROS TWO DELTA (MEROS 2D) [MERO2D]**  
**MORSS TWO DELTA (MORSS 2D) [MORS2D]**  
**PALMA THREE DELTA (MJV 3D)**  
**SARGO TWO GOLF (SARGO 2G) [SARG2G]**  
**RWY 19R DEPARTURES**  
**~~SPEED~~ MAX 250 KT UNTIL LEAVING FL100**



SID	ROUTING
<b>MEROS 2D</b> ①	Climb on MHN R-187 to D5 MHN, turn LEFT, along MHN 7 DME arc, intercept MHN R-010 to MEROS.
<b>MJV 3D</b> ②	Climb on MHN R-187 to CARME, turn RIGHT, 283° heading, intercept MHN R-229 to NEVIC, turn RIGHT, intercept MJV R-101 inbound to MJV.
<b>MORSS 2D</b>	Climb on MHN R-187 to D5 MHN, turn LEFT, along MHN 7 DME arc, intercept MHN R-075 to MORSS.
<b>SARGO 2G</b> ③	Climb on MHN R-187 to D5 MHN, turn RIGHT, along MHN 7 DME arc, intercept MHN R-345 to SARGO.

- ① Mandatory for flights to LEGE.
- ② Mandatory for flights via LFBB FIR/UIR.
- ③ For flights to French aerodromes south of N44° parallel.

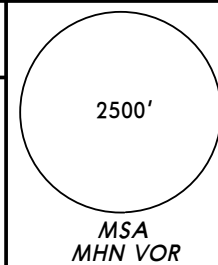
**LEMH/MAH**  
**MENORCA**

**JEPPESEN**  
 12 FEB 10 (10-3D)

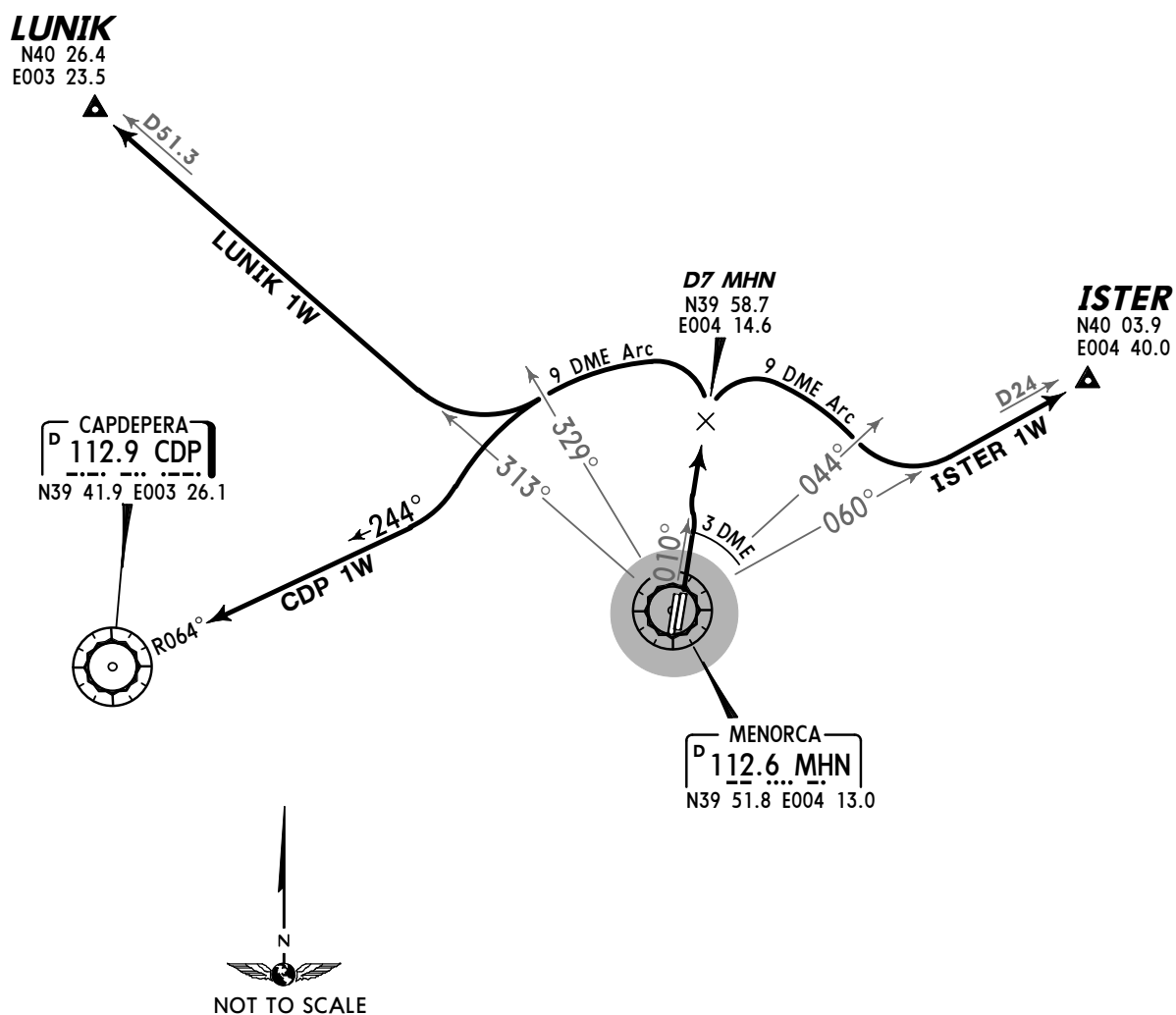
**MENORCA, SPAIN**  
**SID**

Apt Elev  
 302'

Trans level: By ATC Trans alt: 6000'



**CAPDEPERA ONE WHISKEY (CDP 1W)**  
**ISTER ONE WHISKEY (ISTER 1W) [ISTE1W]**  
**LUNIK ONE WHISKEY (LUNIK 1W) [LUNI1W]**  
**RWY 01R DEPARTURES**  
**~~SPEED~~ MAX 250 KT UNTIL LEAVING FL100**



SID	ROUTING
<b>CDP 1W ①</b>	Climb on runway heading to MHN 3 DME, intercept MHN R-010 to D7 MHN, turn LEFT, along MHN 9 DME arc, intercept CDP R-064 inbound to CDP.
<b>ISTER 1W</b>	Climb on runway heading to MHN 3 DME, intercept MHN R-010 to D7 MHN, turn RIGHT, along MHN 9 DME arc, intercept MHN R-060 to ISTER.
<b>LUNIK 1W ②</b>	Climb on runway heading to MHN 3 DME, intercept MHN R-010 to D7 MHN, turn LEFT, along MHN 9 DME arc, intercept MHN R-313 to LUNIK.

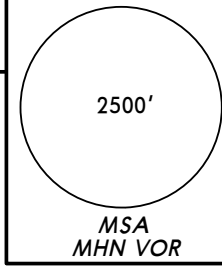
① For flights to LEPA only.  
 ② For flights to LEBL & LERS only; during winter for flights to Spain.

**LEMH/MAH**  
**MENORCA**

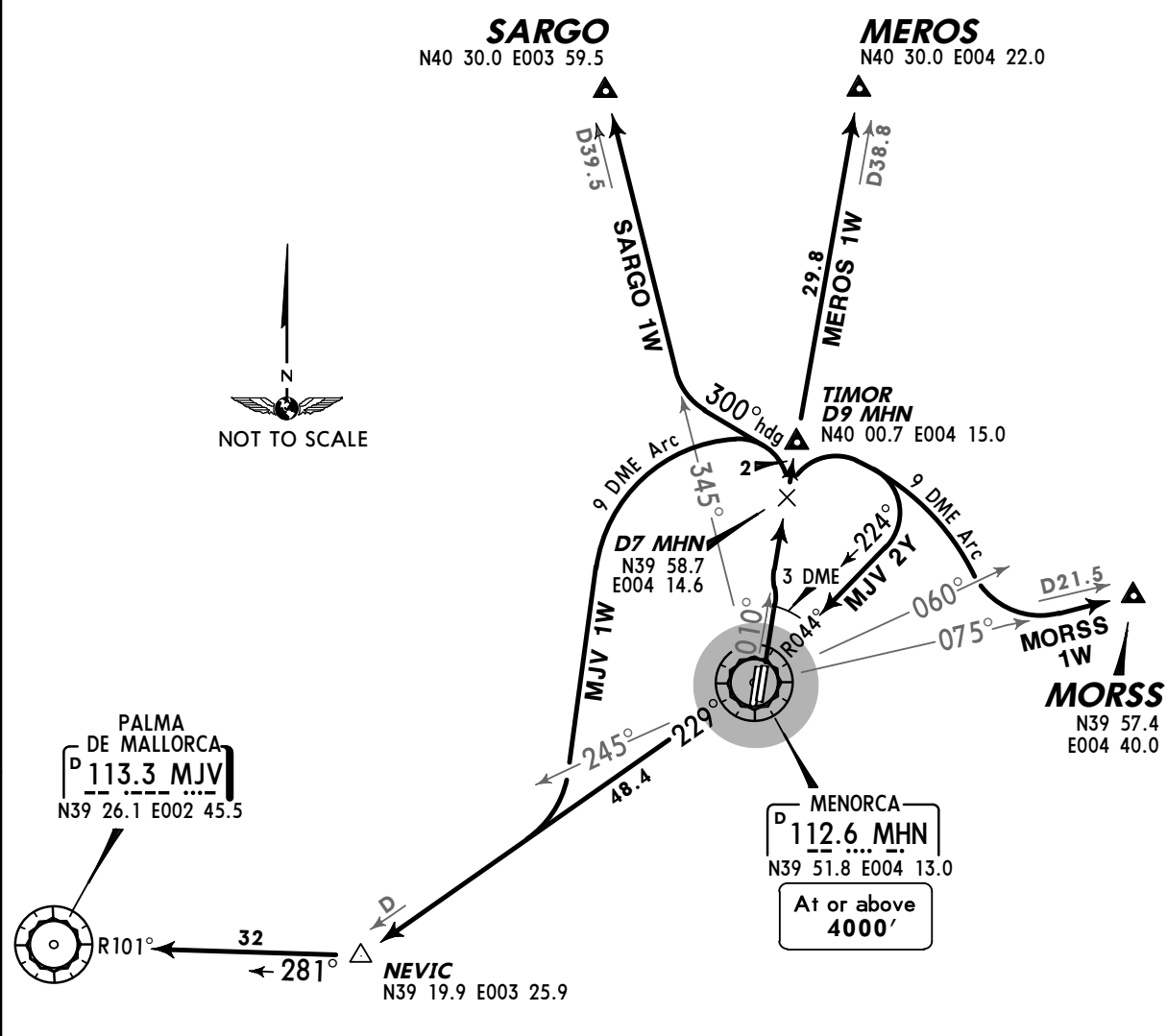
**JEPPESEN**  
 12 FEB 10 **10-3E**

**MENORCA, SPAIN**  
**SID**

Apt Elev 302' Trans level: By ATC Trans alt: 6000'



**MEROS ONE WHISKEY (MEROS 1W) [MERO1W]**  
**MORSS ONE WHISKEY (MORSS 1W) [MORS1W]**  
**PALMA ONE WHISKEY (MJV 1W)**  
**PALMA TWO YANKEE (MJV 2Y)**  
**SARGO ONE WHISKEY (SARGO 1W) [SARG1W]**  
**RWY 01R DEPARTURES**  
***SPEED* MAX 250 KT UNTIL LEAVING FL100**



SID	ROUTING
<b>MEROS 1W ①</b>	Climb on runway heading to MHN 3 DME, intercept MHN R-010 via TIMOR to MEROS.
<b>MJV 1W ②</b>	Climb on runway heading to MHN 3 DME, intercept MHN R-010 to D7 MHN, turn LEFT, along MHN 9 DME arc, intercept MHN R-229 to NEVIC, turn RIGHT, intercept MJV R-101 inbound to MJV.
<b>MJV 2Y ②</b>	Climb on runway heading to MHN 3 DME, intercept MHN R-010 to D7 MHN, turn RIGHT, along MHN 9 DME arc, intercept MHN R-044 inbound to MHN, MHN R-229 to NEVIC, turn RIGHT, intercept MJV R-101 inbound to MJV.
<b>MORSS 1W</b>	Climb on runway heading to MHN 3 DME, intercept MHN R-010 to D7 MHN, turn RIGHT, along MHN 9 DME arc, intercept MHN R-075 to MORSS.
<b>SARGO 1W ③</b>	Climb on runway heading to MHN 3 DME, intercept MHN R-010 to D7 MHN, turn LEFT, 300° heading, intercept MHN R-345 to SARGO.

- ① Mandatory for flights to LEGE.
- ② Mandatory for flights via LFBB FIR/UIR.
- ③ For flights to French aerodromes south of N44° parallel.

**LEMH/MAH**  
**MENORCA**

**JEPPESEN**  
24 JUN 11 **10-3F** **Eff 30 Jun**

**MENORCA, SPAIN**  
**SID**

**RWYS 01L/R, 19R CONTINGENCY DEPARTURES**  
**EXPECT RADAR VECTORING BY MENORCA TWR TO JOIN THE ATS ROUTE**

**RWYS 01L/R:** Climb on runway heading to 3000', turn and follow the ATC instructions.  
**RWY 19R:** Climb on runway heading to 2000', turn and follow the ATC instructions.

These departures require a minimum climb gradient of

**RWYS 01L/R:** 255' per NM (4.2%) up to 3000'.

Gnd speed-KT	75	100	150	200	250	300
255' per NM	319	425	638	851	1063	1276

**LEMH/MAH**

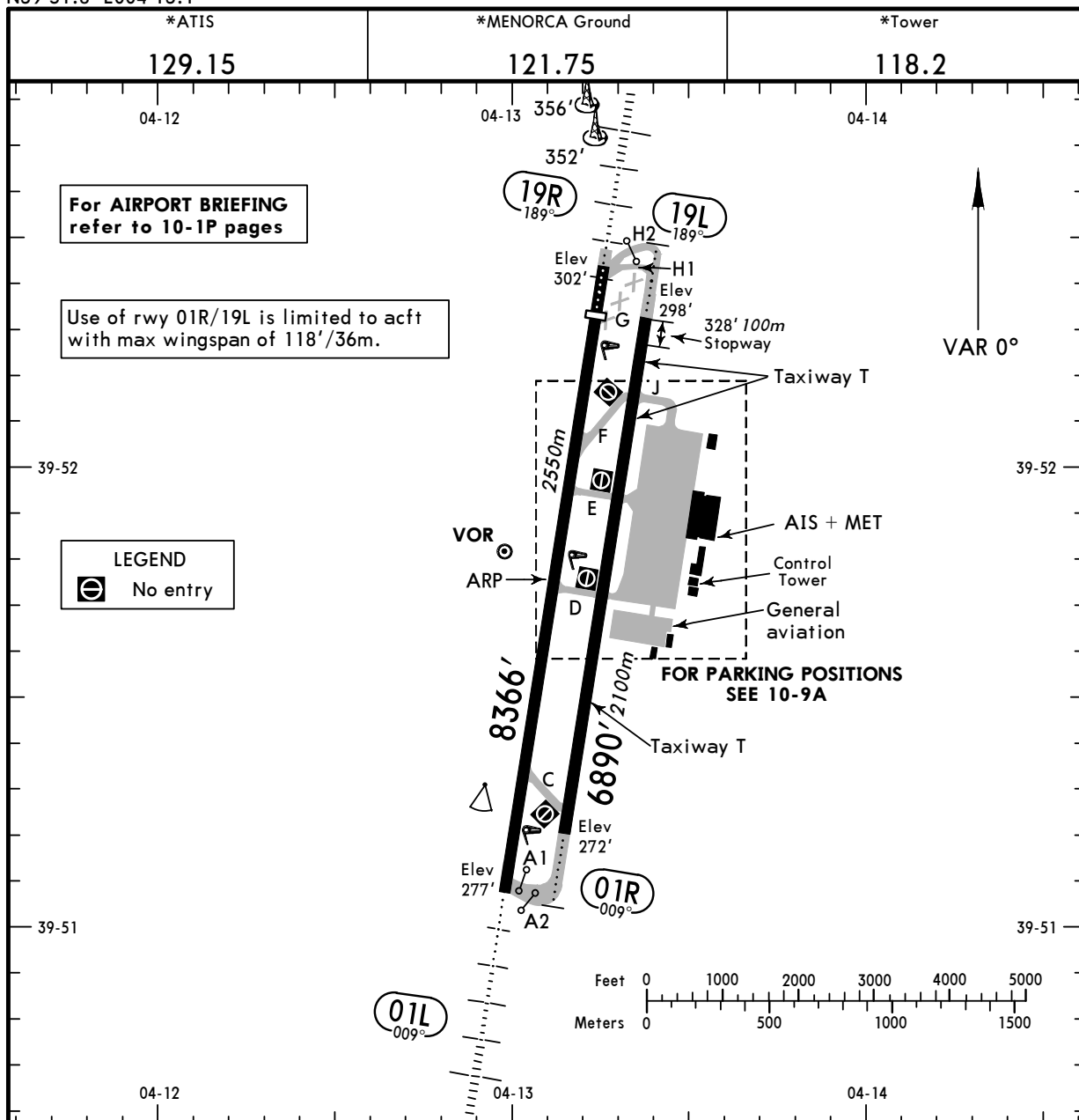
Apt Elev **302'**  
 N39 51.8 E004 13.1

**JEPPESEN**

23 APR 10 **(10-9)** Eff 6 May

**MENORCA, SPAIN**

MENORCA



**ADDITIONAL RUNWAY INFORMATION**

RWY	USABLE LENGTHS				WIDTH
	LANDING BEYOND		TAKE-OFF		
	Threshold	Glide Slope			
01L	HIRL (46m) CL (15m) HIALS REIL PAPI (3.0°) RVR	7710' 2350m ①	6604' 2013m	7710' 2350m ①	148' 45m
19R	HIRL (46m) CL (15m) HIALS REIL PAPI-R (3.0°)		6580' 2006m		
01R ② 19L	HIRL (50m) HIALS REIL PAPI-L (3.0°)		6562' 2000m		148' 45m

① Last 656'/200m of rwy 01L not available for take-off and landing.  
 ② Normally used as twy T.  
 Used as rwy in contingency conditions announced by NOTAM.

**Standard TAKE-OFF ①**

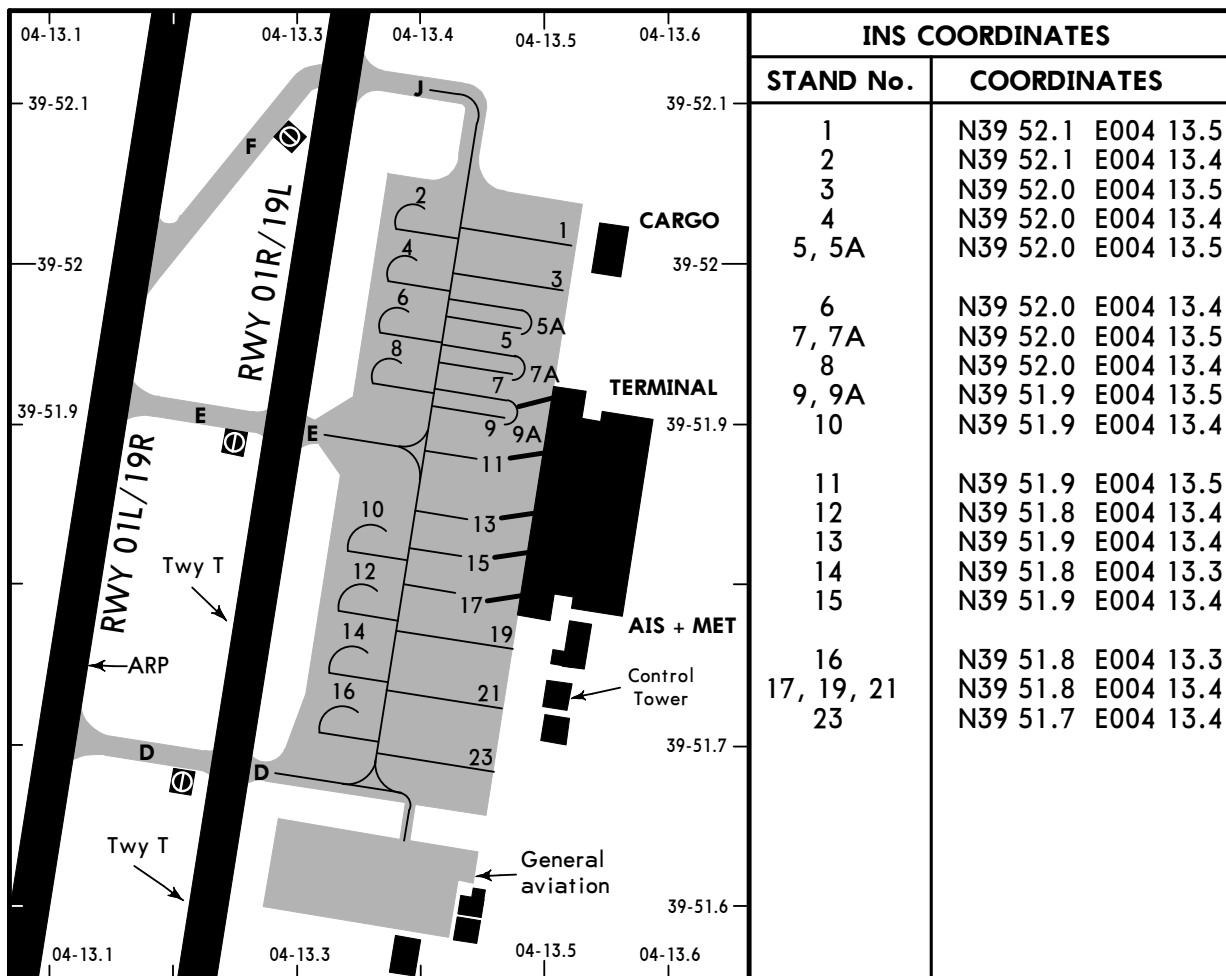
All Rwys						
Approved Operators	LVP must be in force			RCLM (DAY only) or RL	RCLM (DAY only) or RL	NIL (DAY only)
	HIRL, CL & mult. RVR req	RL, CL & mult. RVR req	RL & CL			
A						
B	125m	150m	200m	250m	400m	500m
C						
D	150m	200m	250m	300m		


① Operators applying U.S. Ops Specs: CL required below 300m; approved guidance system required below 150m.

LEMH/MAH

**JEPPESEN**  
 23 APR 10 **10-9A** Eff 6 May

**MENORCA, SPAIN**  
 MENORCA



**LEGEND**  
 No entry

LEMH/MAH

**JEPPESEN**  
 24 JUL 09 **10-9X** **Eff 30 Jul**

**JAA MINIMUMS**  
**MENORCA, SPAIN**  
 MENORCA

STRAIGHT-IN RWY		A	B	C	D
01L	ILS Z/Y	<b>477'</b> (200')	<b>477'</b> (200')	<b>485'</b> (208)	<b>495'</b> (218')
		<b>R550m</b>	<b>R550m</b>	<b>R600m</b>	<b>R600m</b>
	<i>ALS out</i>	R1000m	R1000m	R1000m	R1000m
	LOC Z/Y	<b>660'</b> (383')	<b>660'</b> (383')	<b>660'</b> (383')	<b>660'</b> (383')
		<b>R900m</b>	<b>R1000m</b>	<b>R1000m</b>	<b>R1400m</b>
	<i>ALS out</i>	R1500m	R1500m	R1800m	R2000m
VOR	VOR	<b>660'</b> (383')	<b>660'</b> (383')	<b>660'</b> (383')	<b>660'</b> (383')
		<b>R900m</b>	<b>R1000m</b>	<b>R1000m</b>	<b>R1400m</b>
	<i>ALS out</i>	R1500m	R1500m	R1800m	R2000m
	NDB	<b>660'</b> (383')	<b>660'</b> (383')	<b>660'</b> (383')	<b>660'</b> (383')
		<b>R900m</b>	<b>R1000m</b>	<b>R1000m</b>	<b>R1400m</b>
	<i>ALS out</i>	R1500m	R1500m	R1800m	R2000m
01R	VOR	<b>960'</b> (688')	<b>960'</b> (688')	<b>960'</b> (688)	<b>960'</b> (688')
	<b>R1500m</b>	<b>R1500m</b>	<b>R2000m</b>	<b>R2000m</b>	
19R	ILS Z/Y	<b>510'</b> (213')	<b>520'</b> (223')	<b>530'</b> (233')	<b>540'</b> (243')
		<b>R600m</b>	<b>R600m</b>	<b>R600m</b>	<b>R600m</b>
	<i>ALS out</i>	R1000m	R1000m	R1000m	R1000m
	LOC Z/Y	<b>650'</b> (353')	<b>650'</b> (353')	<b>650'</b> (353')	<b>650'</b> (353')
		<b>R900m</b>	<b>R1000m</b>	<b>R1000m</b>	<b>R1400m</b>
	<i>ALS out</i>	R1500m	R1500m	R1800m	R2000m
	VOR	<b>740'</b> (443')	<b>740'</b> (433')	<b>740'</b> (443')	<b>740'</b> (443')
		<b>R900m</b>	<b>R1000m</b>	<b>R1000m</b>	<b>R1400m</b>
	<i>ALS out</i>	R1500m	R1500m	R1800m	R2000m
	NDB	<b>760'</b> (463')	<b>760'</b> (463')	<b>760'</b> (463')	<b>760'</b> (463')
		<b>R1000m</b>	<b>R1200m</b>	<b>R1200m</b>	<b>R1600m</b>
	<i>ALS out</i>	R1500m	R1500m	R2000m	R2000m

CIRCLE-TO-LAND	100 KT	135 KT	180 KT	205 KT
	<b>740'</b> (438') ①②	<b>900'</b> (598') ②	<b>1010'</b> (708')	<b>1010'</b> (708')
	V1500m	V1600m	V2400m	V3600m

① After NDB rwy 19R: 760' (458').

② After VOR rwy 01R: 960' (658').

**TAKE-OFF RWY 01L/R, 19 L/R**

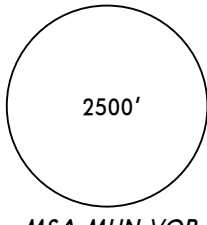
A B C D	Rwy 01L/19R	All Rwys		
	LVP must be in Force	LVP must be in Force		
	RL & CL	RCLM (DAY only) or RL	RCLM (DAY only) or RL	NIL (DAY only)
B	200m	250m	400m	500m
D	250m	300m		



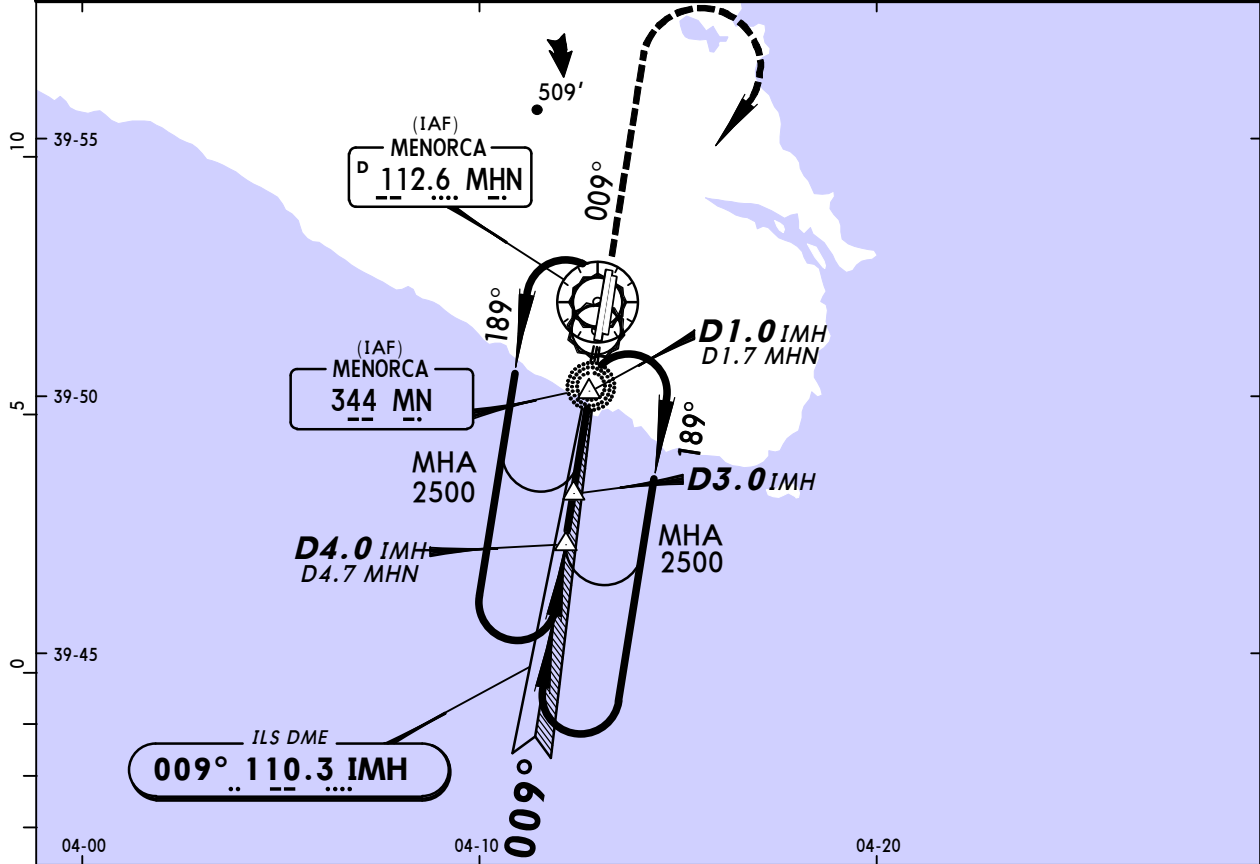
**LEMH/MAH**  
**MENORCA**

**JEPPESEN**  
1 JUL 11 (11-1)

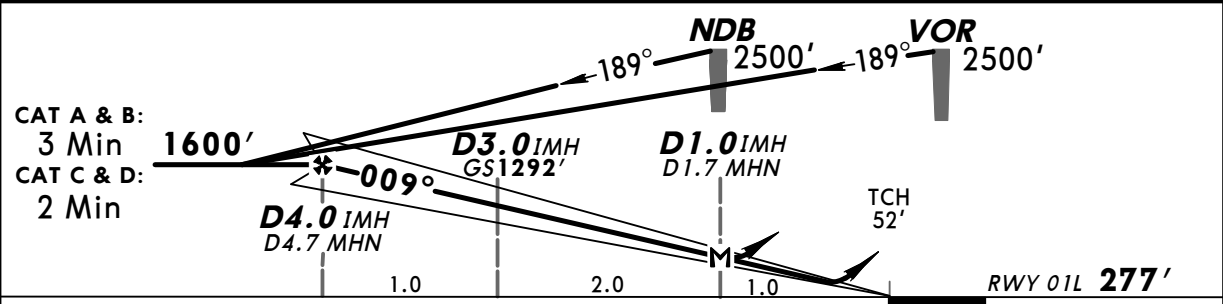
**MENORCA, SPAIN**  
**ILS Z or LOC Z Rwy 01L**


*ATIS <b>129.15</b>		*MENORCA Approach <b>119.65</b>		*MENORCA Tower <b>118.2</b>		*Ground <b>121.75</b>			
LOC IMH <b>110.3</b>		Final Apch Crs <b>009°</b>		GS <b>D3.0 IMH</b> <b>1292'(1015')</b>		ILS DA(H) Refer to Minimums			Apt Elev <b>302'</b> <b>RWY 277'</b>
<b>MISSED APCH: Climb on rwy heading to 2000', then turn RIGHT direct to VOR climbing to 2500' and hold.</b>									

Alt Set: hPa Rwy Elev: 10 hPa Trans level: By ATC Trans alt: 6000'  
 1. DME required. 2. ILS DME reads zero at rwy 01L threshold. 3. Racetracks restricted to MAX 220 KT.



LOC (GS out)	IMH DME	3.0	2.0	1.0
	ALTITUDE	1330'	1000'	660'



Gnd speed-Kts	70	90	100	120	140	160		2000' on Rwy hdg	
ILS GS	3.00°	377	484	538	646	753			861
LOC Descent angle	3.12°	386	497	552	662	773			883
MAP at D1.0 IMH/D1.7 MHN									

PANS OPS 4	<b>Standard</b>				<b>STRAIGHT-IN LANDING RWY 01L</b>		<b>CIRCLE-TO-LAND</b>	
	ILS C: <b>485'(208')</b>		LOC (GS out)		DA(H) <b>660'(383')</b>			
	DA(H) AB: <b>477'(200')</b> D: <b>495'(218')</b>							
	FULL	Limited	ALS out	ALS out	Max Kts	MDA(H)	VIS	
	A				100	<b>740'(438')</b>	1500m	
B			RVR 1500m	135	<b>900'(598')</b>	1600m		
C	RVR 550m	RVR 750m	RVR 1200m	RVR 1100m	180	<b>1010'(708')</b>	2400m	
D					205	<b>1010'(708')</b>	3600m	

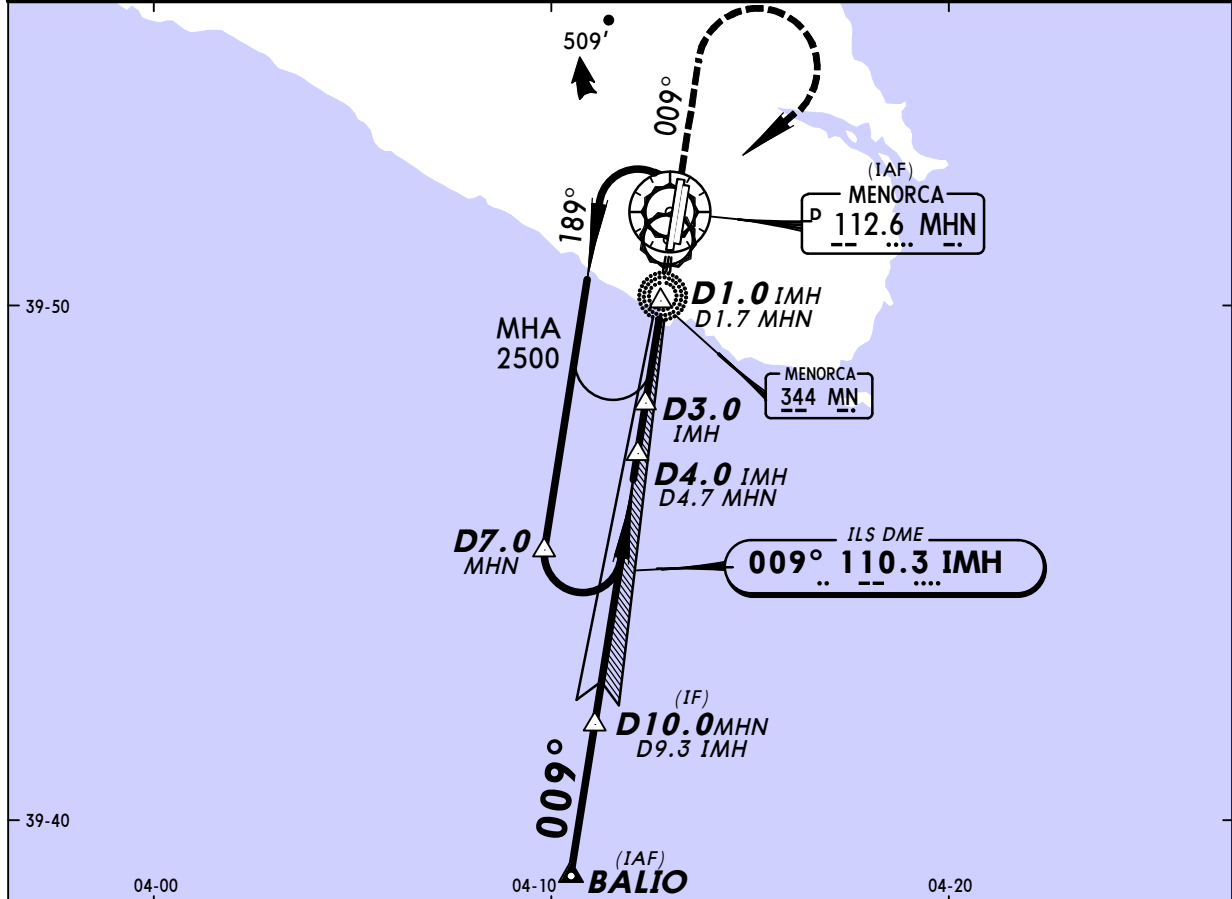
**LEMH/MAH**  
**MENORCA**



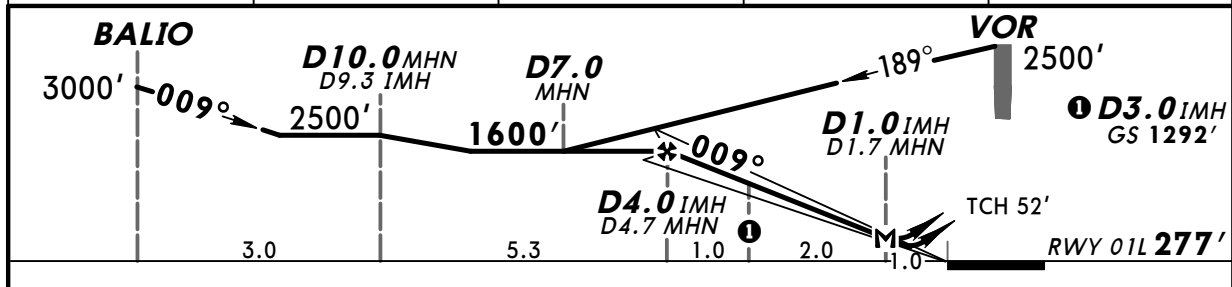
**MENORCA, SPAIN**  
**ILS Y or LOC Y Rwy 01L**

BRIEFING STRIP™

*ATIS <b>129.15</b>		*MENORCA Approach <b>119.65</b>		*MENORCA Tower <b>118.2</b>		*Ground <b>121.75</b>		<div style="border: 1px solid black; border-radius: 50%; width: 100px; height: 100px; margin: 0 auto;">2500'</div>
LOC IMH <b>110.3</b>	Final Apch Crs <b>009°</b>	GS <b>D3.0 IMH</b> 1292' (1015')	ILS DA(H) Refer to Minimums		Apt Elev <b>302'</b> RWY <b>277'</b>			
<b>MISSED APCH: Climb on rwy heading to 2000', then turn RIGHT direct to VOR climbing to 2500' and hold.</b>								
Alt Set: hPa		Rwy Elev: 10 hPa		Trans level: By ATC		Trans alt: 6000'		
<b>1. DME required. 2. ILS DME reads zero at rwy 01L threshold. 3. Racetrack restricted to MAX 210 KT.</b>								



LOC (GS out)	IMH DME	3.0	2.0	1.0
	ALTITUDE	1330'	1000'	660'



Gnd speed-Kts	70	90	100	120	140	160	HIALS REIL PAPI PAPI	2000' on Rwy hdg	
ILS GS	3.00°	377	484	538	646	753			861
LOC Descent angle	3.12°	386	497	552	662	773			883
MAP at D1.0 IMH/D1.7 MHN									

PANS OPS 4	<b>Standard STRAIGHT-IN LANDING RWY 01L</b>				<b>CIRCLE-TO-LAND</b>			
	ILS C: <b>485' (208')</b>		LOC (GS out) DA(H) <b>660' (383')</b>		Max Kts	MDA(H)	VIS	
	DA(H) AB: <b>477' (200')</b> D: <b>495' (218')</b>							
		FULL	Limited	ALS out	ALS out	100	740' (438')	1500m
	A				RVR 1500m	135	900' (598')	1600m
B	RVR 550m	RVR 750m	RVR 1200m	RVR 1100m	180	1010' (708')	2400m	
C				RVR 1800m	205	1010' (708')	3600m	
D								

**LEMH/MAH**  
**MENORCA**

**JEPPESEN**  
1 JUL 11 (11-3)

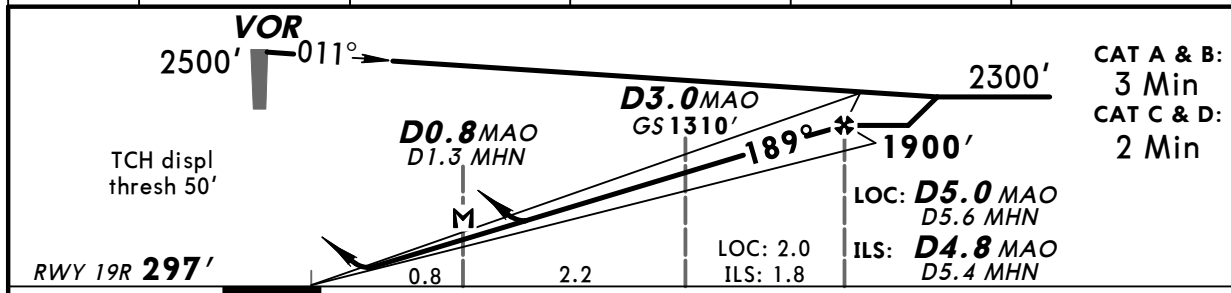
**MENORCA, SPAIN**  
**ILS Z or LOC Z Rwy 19R**

BRIEFING STRIP™

*ATIS <b>129.15</b>	*MENORCA Approach <b>119.65</b>	*MENORCA Tower <b>118.2</b>	*Ground <b>121.75</b>
LOC MAO <b>111.5</b>	Final Apch Crs <b>189°</b>	GS <b>D3.0MAO</b> 1310' (1013')	ILS DA(H) Refer to Minimums Apt Elev <b>302'</b> RWY <b>297'</b>
<b>MISSED APCH: Climb on rwy heading to 2000', then turn LEFT direct to VOR climbing to 2500' and hold.</b>			<div style="border: 1px solid black; border-radius: 50%; width: 100px; height: 100px; display: flex; align-items: center; justify-content: center;">2500'</div> <p>MSA MHN VOR</p>
Alt Set: hPa    Rwy Elev: 11 hPa    Trans level: By ATC    Trans alt: 6000' 1. DME required. 2. ILS DME reads zero at rwy 19R displaced threshold. 3. Racetrack restricted to MAX 220 KT.			



LOC (GS out)	MAO DME	1.0	2.0	3.0	4.0
	ALTITUDE	670'	990'	1310'	1630'



Gnd speed-Kts	70	90	100	120	140	160	HIALS REIL PAPI 2000' on Rwy hdg
ILS GS or LOC Descent angle 3.00°	377	484	538	646	753	861	
MAP at D0.8 MAO/D1.3 MHN							

<b>Standard</b>				<b>STRAIGHT-IN LANDING RWY 19R</b>			<b>CIRCLE-TO-LAND</b>		
<b>ILS</b>			<b>LOC (GS out)</b>						
A: 510' (213') C: 530' (233')			DA(H) 650' (353')						
B: 520' (223') D: 540' (243')									
	FULL	Limited	ALS out		ALS out	Max Kts.	MDA(H)	Vis	
A						100	740' (438')	1500m	
B			RVR 1200m		RVR 1500m	135	900' (598')	1600m	
C	RVR 550m	RVR 750m		RVR 900m		180	1010' (708')	2400m	
D			RVR 1300m		RVR 1600m	205	1010' (708')	3600m	

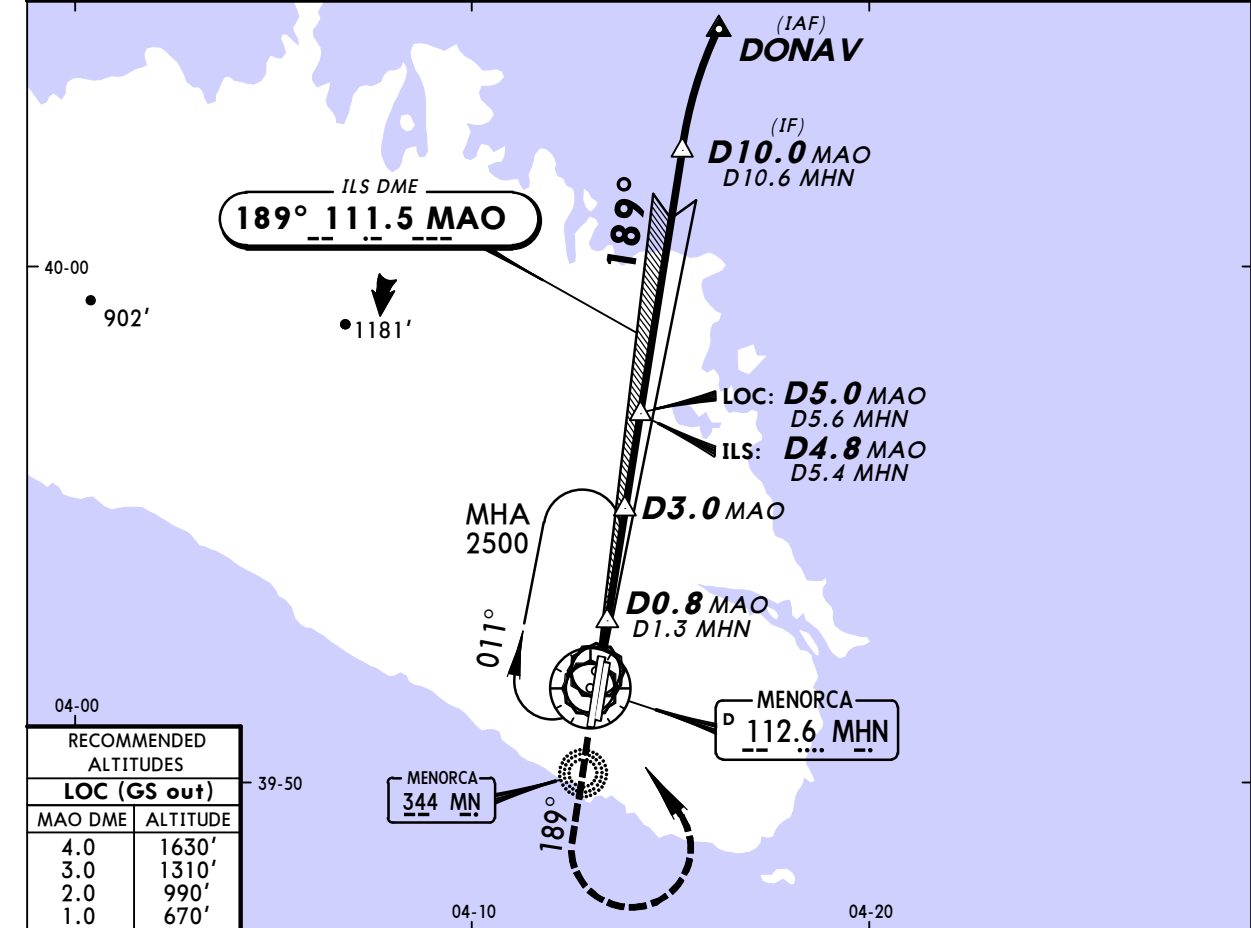
PANS OPS 4

**LEMH/MAH**  
**MENORCA**

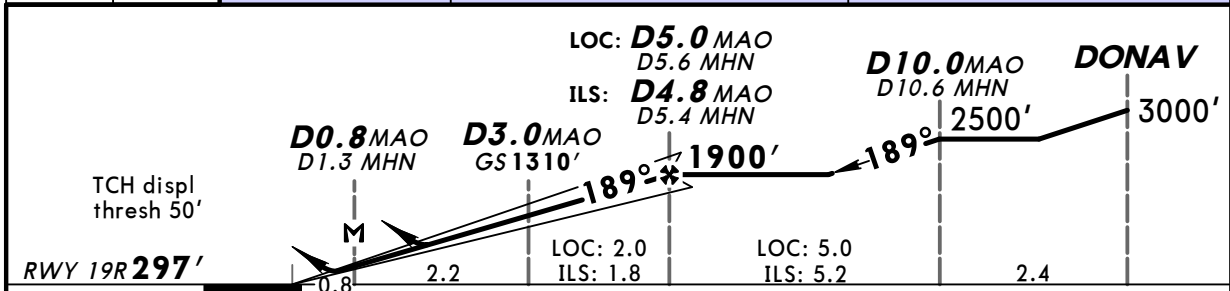
**JEPPESEN**  
1 JUL 11 (11-4)

**MENORCA, SPAIN**  
**ILS Y or LOC Y Rwy 19R**

*ATIS <b>129.15</b>		*MENORCA Approach <b>119.65</b>		*MENORCA Tower <b>118.2</b>		*Ground <b>121.75</b>	
LOC MAO <b>111.5</b>	Final Apch Crs <b>189°</b>	GS <b>D3.0 MAO</b> 1310' (1013')	ILS DA(H) Refer to Minimums	Apt Elev <b>302'</b>	RWY <b>297'</b>		
<b>MISSED APCH: Climb on rwy heading to 2000', then turn LEFT direct to VOR climbing to 2500' and hold.</b>							
Alt Set: hPa    Rwy Elev: 11 hPa    Trans level: By ATC    Trans alt: 6000'							
<b>1. DME required.</b> 2. ILS DME reads zero at rwy 19R displaced threshold.							



RECOMMENDED ALTITUDES	
LOC (GS out)	
MAO DME	ALTITUDE
4.0	1630'
3.0	1310'
2.0	990'
1.0	670'



Gnd speed-Kts	70	90	100	120	140	160	HIALS REIL PAPI 2000' on Rwy hdg
ILS GS or LOC Descent angle 3.00°	377	484	538	646	753	861	
MAP at D0.8 MAO/D1.3 MHN							

Standard STRAIGHT-IN LANDING RWY 19R				CIRCLE-TO-LAND		
ILS A: 510' (213') C: 530' (233') DA(H) B: 520' (223') D: 540' (243')			LOC (GS out) DA(H) 650' (353')			Max Kts.    MDA(H)    VIS
FULL	Limited	ALS out	ALS out			
A				RVR 1500m	100	740' (438') 1500m
B					135	900' (598') 1600m
C	RVR 550m	RVR 750m		RVR 900m	180	1010' (708') 2400m
D			RVR 1300m	RVR 1600m	205	1010' (708') 3600m

PANS OPS 4

**LEMH/MAH**  
**MENORCA**



**MENORCA, SPAIN**  
**VOR Rwy 01L**

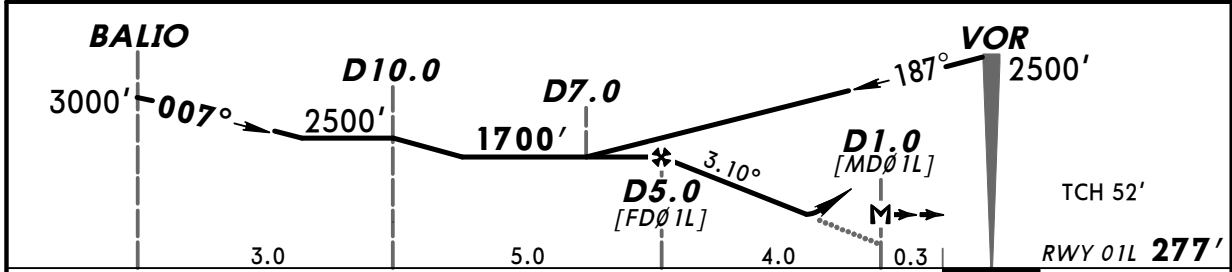
BRIEFING STRIP™

*ATIS <b>129.15</b>	*MENORCA Approach <b>119.65</b>	*MENORCA Tower <b>118.2</b>	*Ground <b>121.75</b>	2500'	
VOR MHN <b>112.6</b>	Final Apch Crs <b>007°</b>	Minimum Alt D5.0 <b>1700'</b> (1423')	DA(H) <b>660'</b> (383')		Apt Elev <b>302'</b> RWY <b>277'</b>
<b>MISSED APCH:</b> Climb on R-187 inbound to VOR. Proceed on R-007 to 2000', then turn RIGHT to VOR climbing to 2500' and hold.					MSA MHN VOR

Alt Set: hPa      Rwy Elev: 10 hPa      Trans level: By ATC      Trans alt: 6000'  
**1. DME required.**    2. Racetrack restricted to MAX 210 KT.    3. Final apch track offset 2° from RCL.



MHN DME	4.0	3.0	2.0
ALTITUDE	1420'	1090'	750'



Gnd speed-Kts	70	90	100	120	140	160	HIALS	MHN	MHN	2000'	MHN	
Descent angle	3.10°	384	494	548	658	768	878	REIL	112.6	on 112.6	2000'	on 112.6
MAP at D1.0								PAPI	↑	R-187	↑	R-007

<b>Standard</b>		STRAIGHT-IN LANDING RWY 01L		CIRCLE-TO-LAND	
		DA(H) <b>660'</b> (383')			
		ALS out		Max Kts.	MDA(H) _____ VIS _____
A		RVR 1500m		100	740' (438') 1500m
B		RVR 1100m		135	900' (598') 1600m
C		RVR 1800m		180	1010' (708') 2400m
D				205	1010' (708') 3600m

PANS OPS 4

**LEMH/MAH**  
**MENORCA**



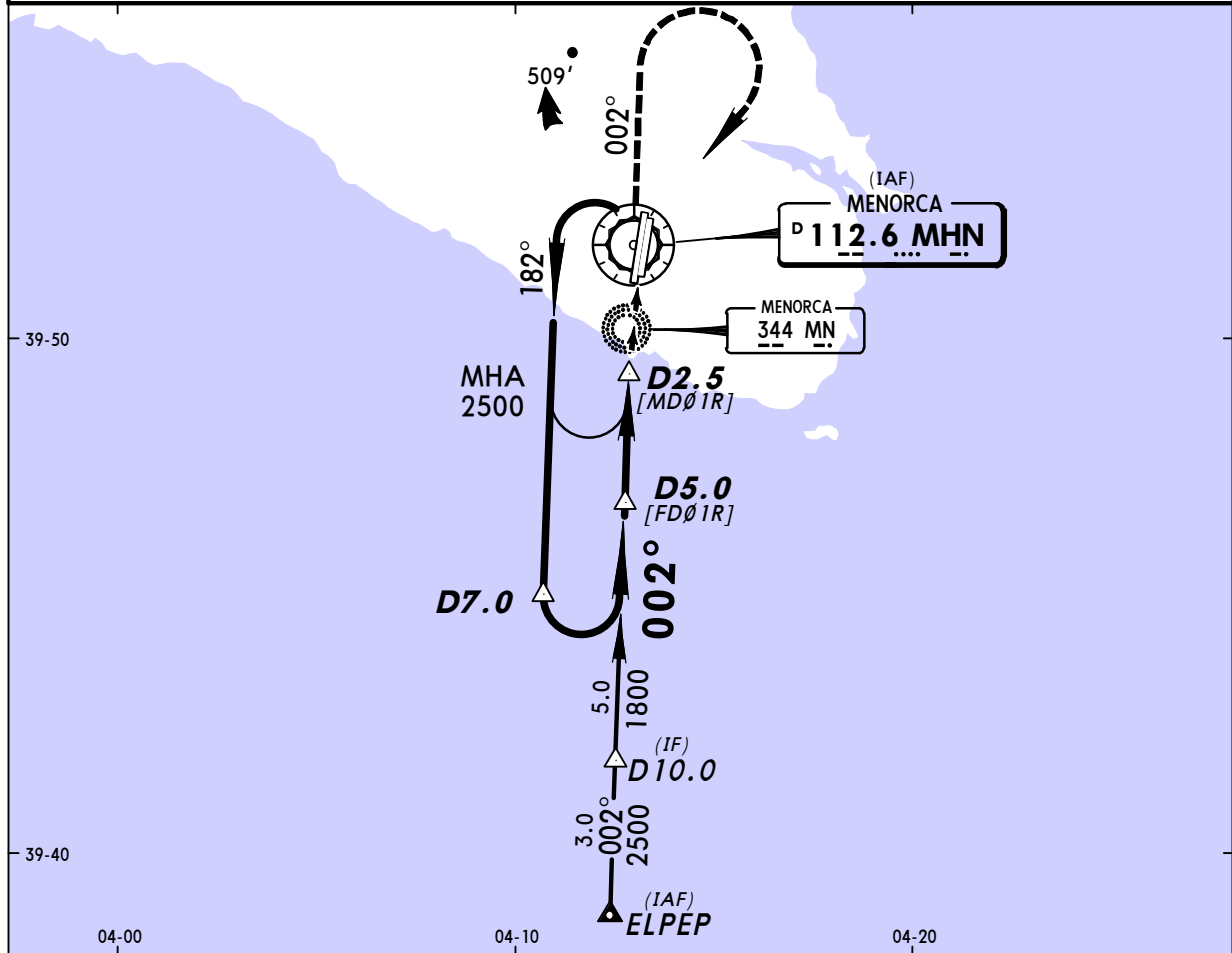
**MENORCA, SPAIN**  
**VOR Rwy 01R**

BRIEFING STRIP™

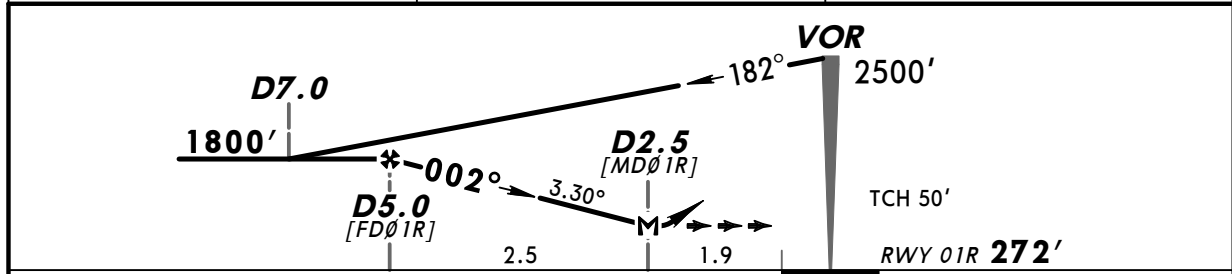
*ATIS <b>129.15</b>	*MENORCA Approach <b>119.65</b>	*MENORCA Tower <b>118.2</b>	*Ground <b>121.75</b>	<div style="border: 1px solid black; border-radius: 50%; width: 100px; height: 100px; margin: 0 auto;"></div> <p>2500'</p>	
VOR MHN <b>112.6</b>	Final Apch Crs <b>002°</b>	Minimum Alt D5.0 <b>1800'</b> (1528')	DA(H) <b>960'</b> (688')		Apt Elev <b>302'</b> RWY <b>272'</b>
<p><b>MISSED APCH:</b> Climb on R-182 inbound to VOR. Proceed on R-002 to 2000', then turn RIGHT to VOR climbing to 2500' and hold.</p>					MSA MHN VOR

Alt Set: hPa      Rwy Elev: 10 hPa      Trans level: By ATC      Trans alt: 6000'

**1. DME required.**    2. Racetrack restricted to MAX 210 KT.    3. Final apch track offset 7° from RCL.



MHN DME	4.0	3.0
ALTITUDE	1510'	1160'



Gnd speed-Kts	70	90	100	120	140	160	HIALS	MHN	MHN	2000'	MHN	
Descent angle	3.30°	409	526	584	701	817	934	REIL	112.6	on 112.6	2000'	on 112.6
MAP at D2.5								PAPI	↑	R-182	↑	R-002

PANS OPS 4	<b>Standard</b>		<b>STRAIGHT-IN LANDING RWY 01R</b>		<b>CIRCLE-TO-LAND</b>	
	DA(H) <b>960'</b> (688')					
			ALS out		Max Kts.	MDA(H) _____ VIS _____
	A				100	<b>990'</b> (688')    3200m
	B				135	
C	CMV 3000m		CMV 3200m	180	<b>1010'</b> (708')    3200m	
D				205	<b>1010'</b> (708')    3600m	

CHANGES: ATIS frequency.

**LEMH/MAH**  
**MENORCA**

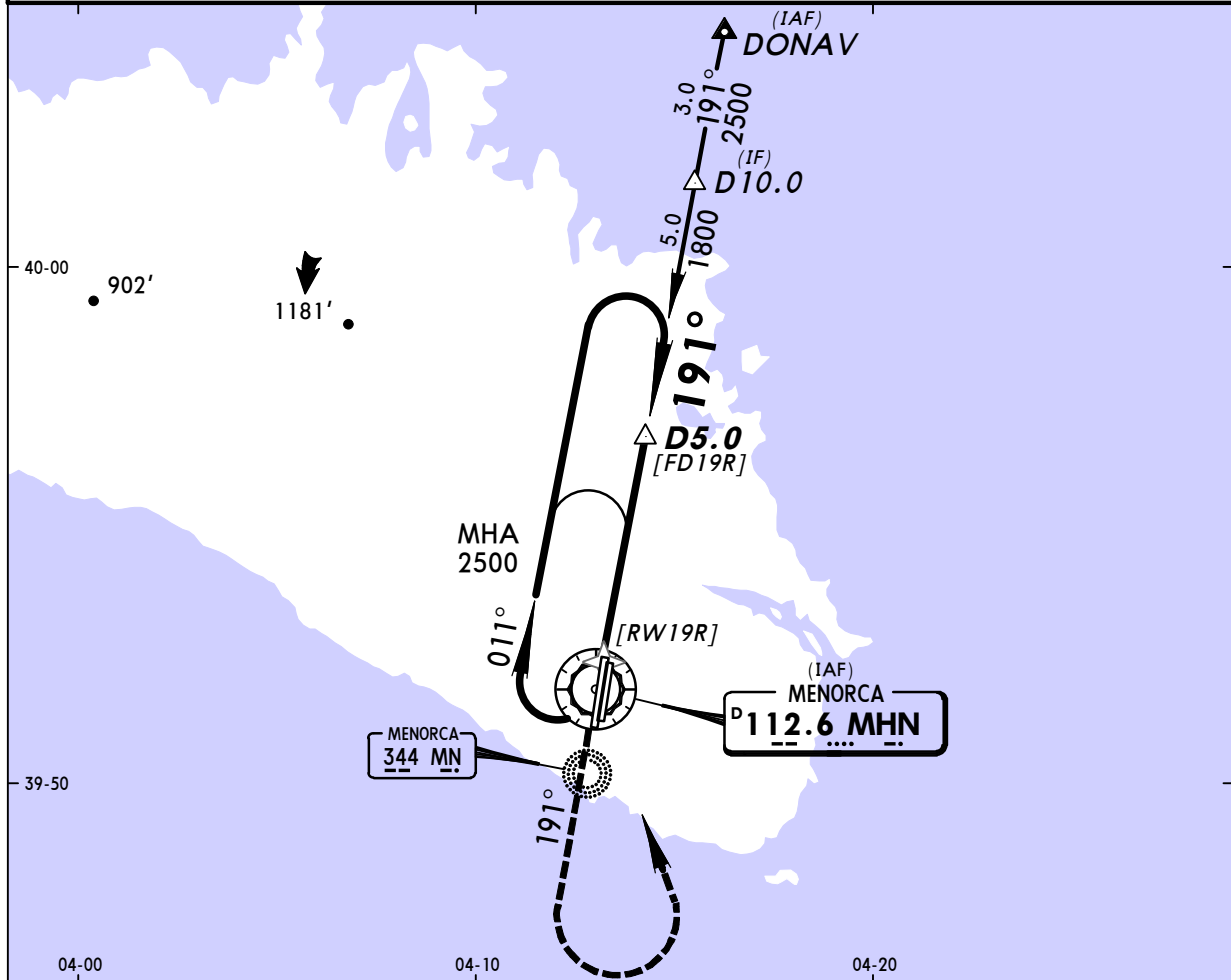


**MENORCA, SPAIN**  
**VOR Rwy 19R**

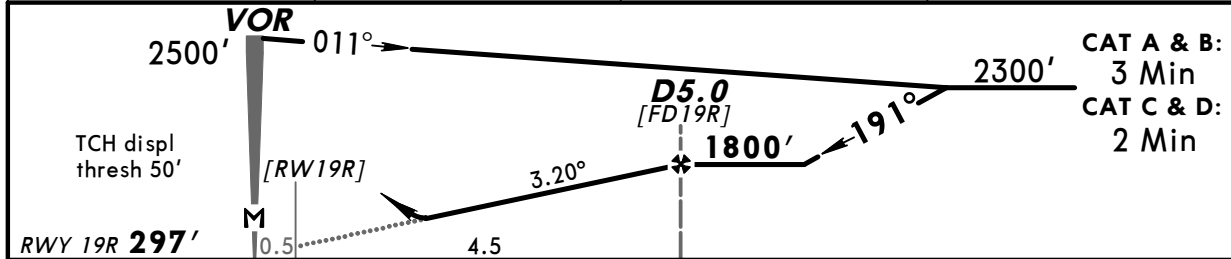
BRIEFING STRIP™

*ATIS <b>129.15</b>	*MENORCA Approach <b>119.65</b>	*MENORCA Tower <b>118.2</b>	*Ground <b>121.75</b>	<div style="border: 1px solid black; border-radius: 50%; width: 100px; height: 100px; margin: 0 auto;">2500'</div>	
VOR MHN <b>112.6</b>	Final Apch Crs <b>191°</b>	Minimum Alt <b>D5.0</b> <b>1800'</b> (1503')	DA(H) <b>740'</b> (443')		Apt Elev <b>302'</b> RWY <b>297'</b>
<b>MISSED APCH: Climb on R-191 to 2000', then turn LEFT direct to VOR climbing to 2500' and hold.</b>					MSA MHN VOR

Alt Set: hPa      Rwy Elev: 11 hPa      Trans level: By ATC      Trans alt: 6000'  
**1. DME required.**    2. Racetrack restricted to MAX 220 KT.    3. Final apch track offset 2° from RCL.



MHN DME	2.0	3.0	4.0
ALTITUDE	840'	1180'	1520'



Gnd speed-Kts	70	90	100	120	140	160	HIALS REIL PAPI 2000' MHN on 112.6 ↑ R-191	
Descent angle	3.20°	396	510	566	679	793		906
MAP at VOR								

PANS OPS 4	<b>Standard</b>		<b>STRAIGHT-IN LANDING RWY 19R</b>		<b>CIRCLE-TO-LAND</b>	
	DA(H) <b>740'</b> (443')					
			ALS out		Max Kts.	
	A		RVR 1500m		100	750' (448') 1500m
	B		RVR 1400m		135	900' (598') 1600m
C		CMV 2100m		180	1010' (708') 2400m	
D				205	1010' (708') 3600m	

CHANGES: ATIS frequency.

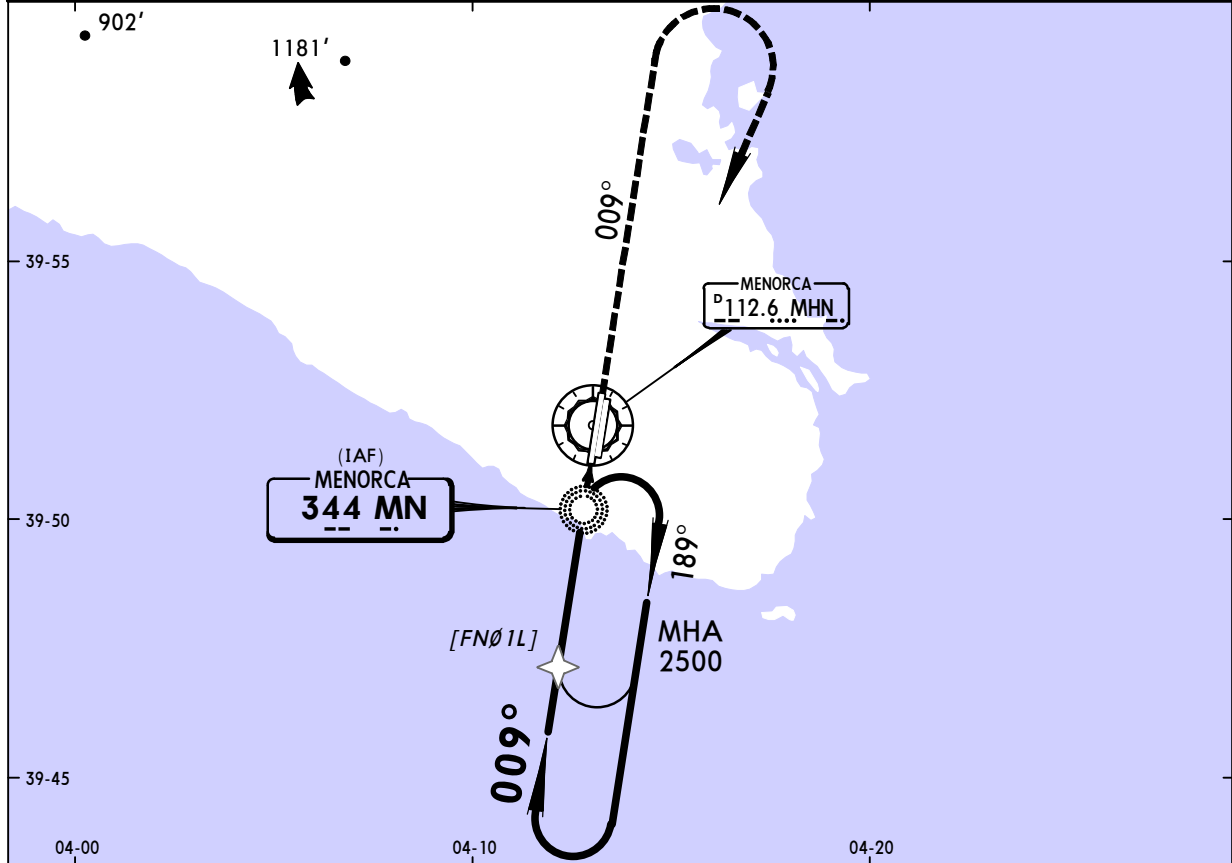
**LEMH/MAH**  
**MENORCA**



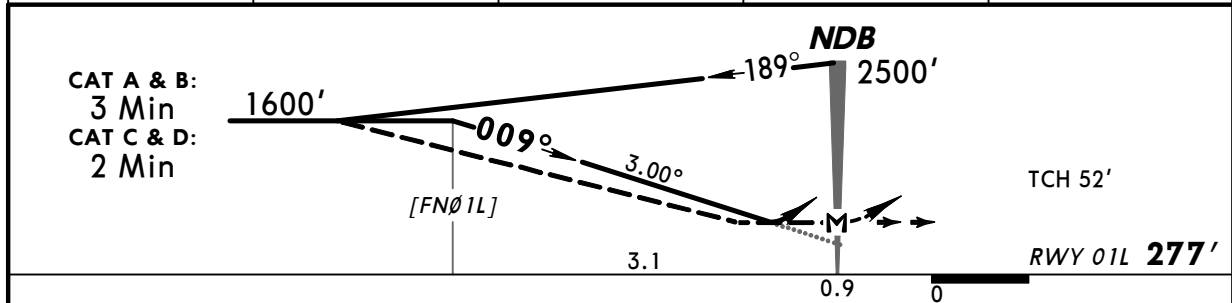
**MENORCA, SPAIN**  
**NDB Rwy 01L**

BRIEFING STRIP™

*ATIS <b>129.15</b>		*MENORCA Approach <b>119.65</b>		*MENORCA Tower <b>118.2</b>		*Ground <b>121.75</b>	
NDB MN <b>344</b>	Final Apch Crs <b>009°</b>	Minimum Alt No FAF	CDFA DA(H) <b>660' (383')</b>	Apt Elev <b>302'</b>	RWY <b>277'</b>		
<b>MISSED APCH: Climb on 009° to 2000', then turn RIGHT to NDB</b> <b>climbing to 2500' and hold.</b>							 2500' MSA MN NDB
Alt Set: hPa		Rwy Elev: 10 hPa		Trans level: By ATC		Trans alt: 6000'	



DIST to NDB	3.1	3.0	2.0	1.0
ALTITUDE	1600'	1570'	1250'	940'



Gnd speed-Kts	70	90	100	120	140	160	 2000 on 009°
Descent angle 3.00°	372	478	531	637	743	849	
MAP at NDB							

<b>Standard</b>				<b>STRAIGHT-IN LANDING RWY 01L</b>		<b>CIRCLE-TO-LAND</b>	
CDFA		non-CDFA					
DA(H) <b>660' (383')</b>		MDA(H) <b>660' (383')</b>					
	ALS out		ALS out	Max Kts	MDA(H)	VIS	
A	RVR 1500m	RVR 1300m	RVR 2000m	100	<b>740' (438')</b> <b>1</b> 1500m		
B	RVR 1100m	RVR 1500m	CMV 2200m	135	<b>900' (598')</b> <b>1</b> 1600m		
C	RVR 1800m	RVR 1500m		180	<b>1010' (708')</b> 2400m		
D				205	<b>1010' (708')</b> 3600m		

**1** After non-CDFA apch: 2000m.

PANS OPS 4



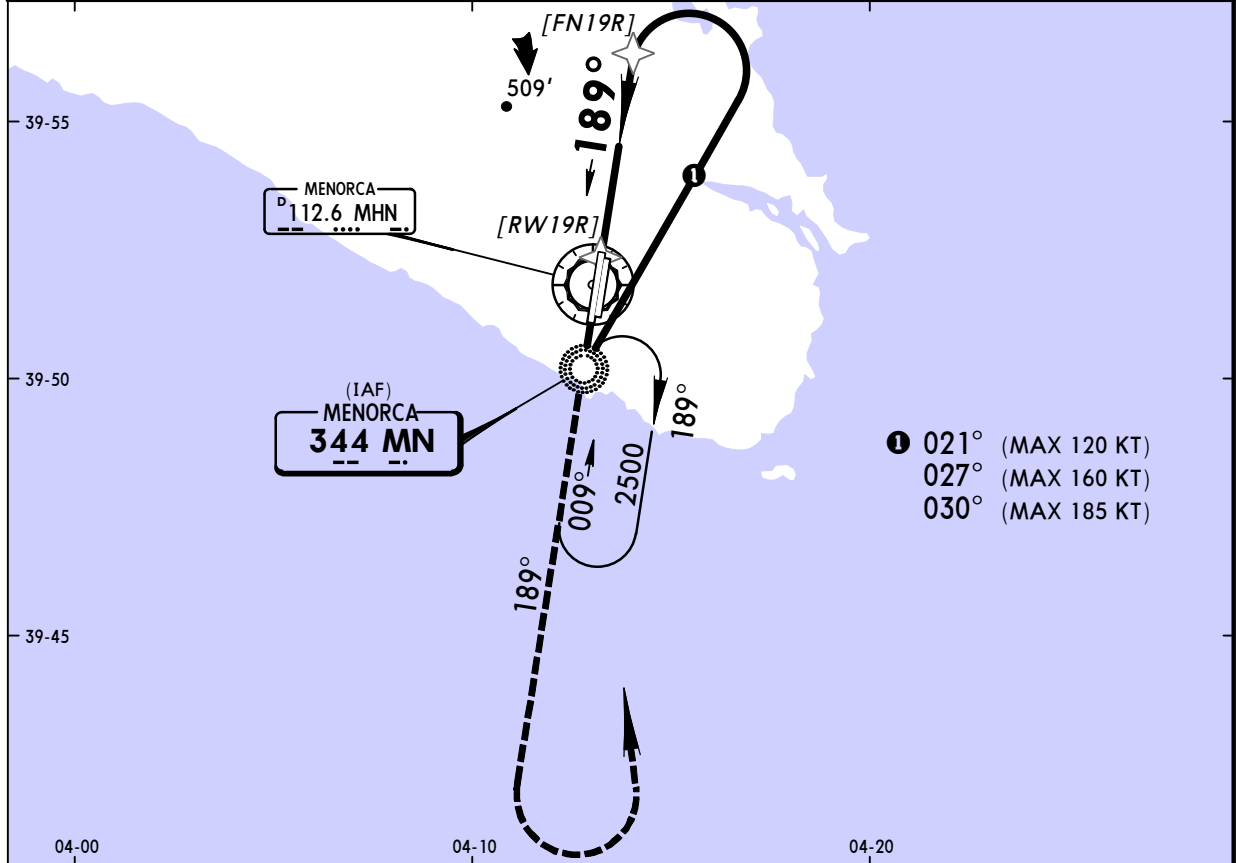
**LEMH/MAH**  
**MENORCA**

**JEPPESEN**  
1 JUL 11 (16-2)

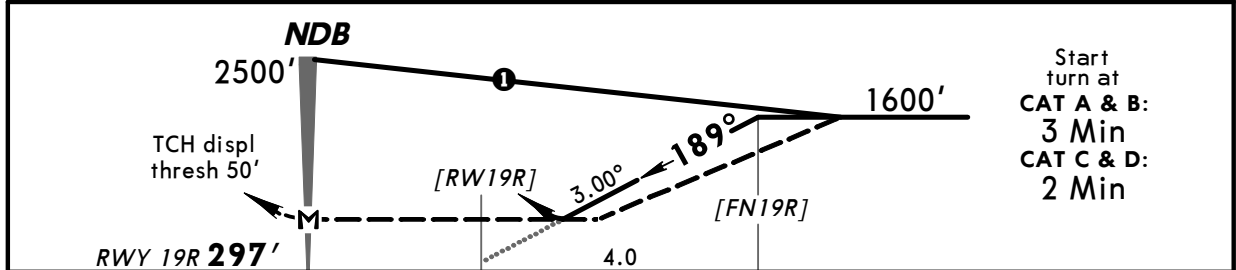
**MENORCA, SPAIN**  
**NDB Rwy 19R**

BRIEFING STRIP™

*ATIS <b>129.15</b>		*MENORCA Approach <b>119.65</b>		*MENORCA Tower <b>118.2</b>		*Ground <b>121.75</b>		<div style="border: 1px solid black; border-radius: 50%; width: 100px; height: 100px; margin: 0 auto;">2500'</div> <p>MSA MN NDB</p>		
NDB MN <b>344</b>		Final Apch Crs <b>189°</b>		Minimum Alt No FAF		CDA DA(H) <b>760' (463')</b>			Apt Elev <b>302'</b> RWY <b>297'</b>	
<p><b>MISSED APCH: Climb on 189° to 2000', then turn LEFT to NDB climbing to 2500' and hold.</b></p>										
Alt Set: hPa		Rwy Elev: 11 hPa		Trans level: By ATC			Trans alt: 6000'			
Baseturn restricted to MAX 185 KT.										



DIST to RW19R	2.0	3.0	4.0
ALTITUDE	970'	1290'	1600'



Gnd speed-Kts	70	90	100	120	140	160	HIALS REIL PAPI 2000' on 189°
Descent angle 3.00°	372	478	531	637	743	849	
MAP at NDB							

	STRAIGHT-IN LANDING RWY 19R				CIRCLE-TO-LAND	
	CDFA		non-CDFA		Max Kts	MDA(H) VIS
	DA(H) <b>760' (463')</b>		MDA(H) <b>760' (463')</b>			
	ALS out		ALS out			
A	RVR 1500m	RVR 1500m	RVR 1700m	CMV 2400m	100	<b>770' (468')</b> 1500m
B					135	<b>900' (598')</b> 1600m
C		CMV 2200m	RVR 1900m	CMV 2600m	180	<b>1010' (708')</b> 2600m
D					205	<b>1010' (708')</b> 3600m

1 After non-CDFA apch: 2400m.

PANS OPS 4

**JEPPesen**

27 NOV 09

19-1

**MENORCA**

MENORCA

**Balearic Islands**

**SPAIN**

2.4 NM SW Mahón

**LEMH**

Elev **302'** / 92m

N39 51.8

E004 13.1

(APP)

MENORCA APPROACH **119.65**

(TWR)

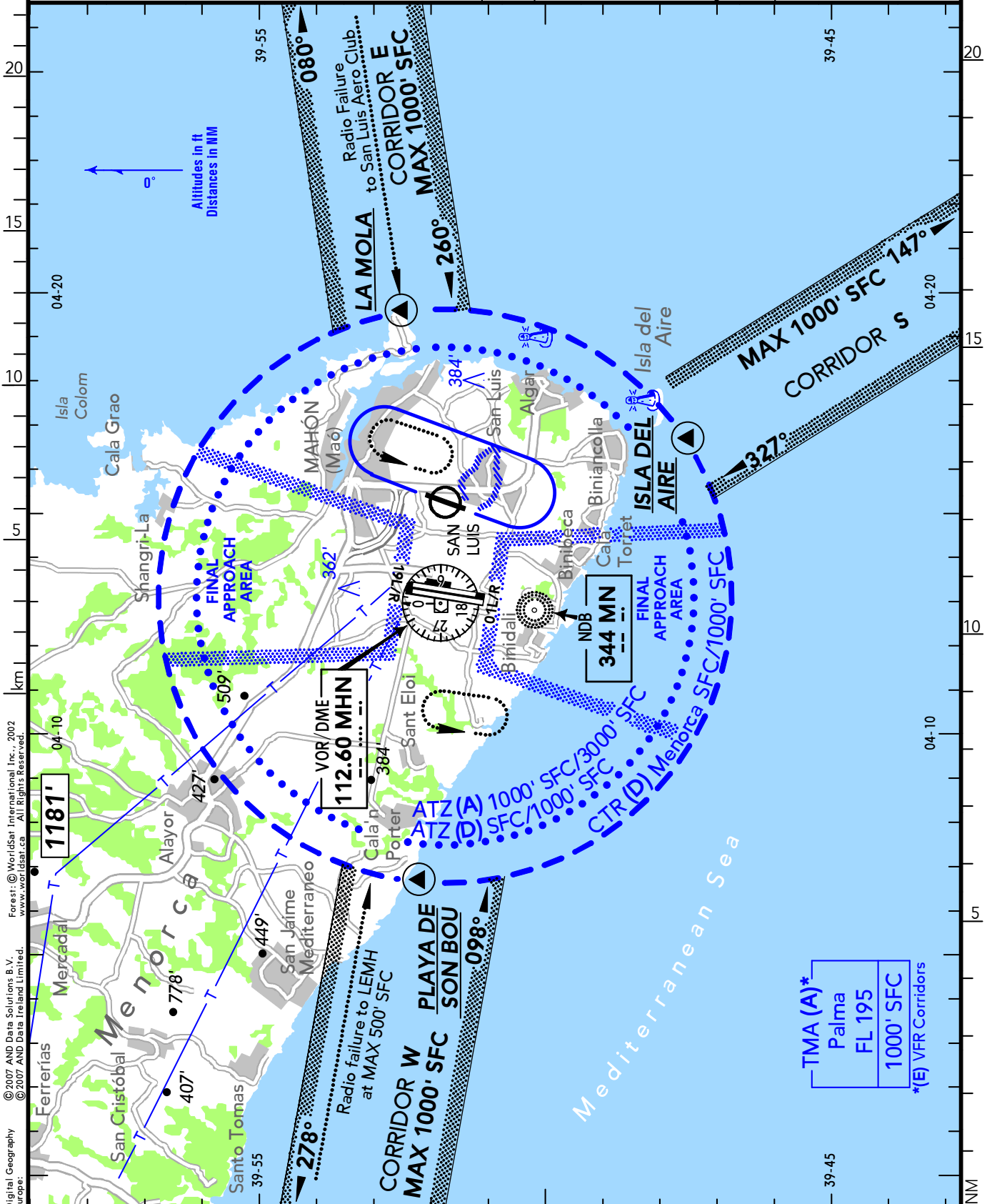
MENORCA TOWER **118.20** (sp, en)

GROUND **121.75**

ATIS **129.15**

\*ILS/DME freq paired. DME reads zero at THR.

RWY	ILS	RWY	ILS
01L*	110.30 IMH 009°	19R*	111.50 MAO 189°



# MENORCA

19-2 27 NOV 09



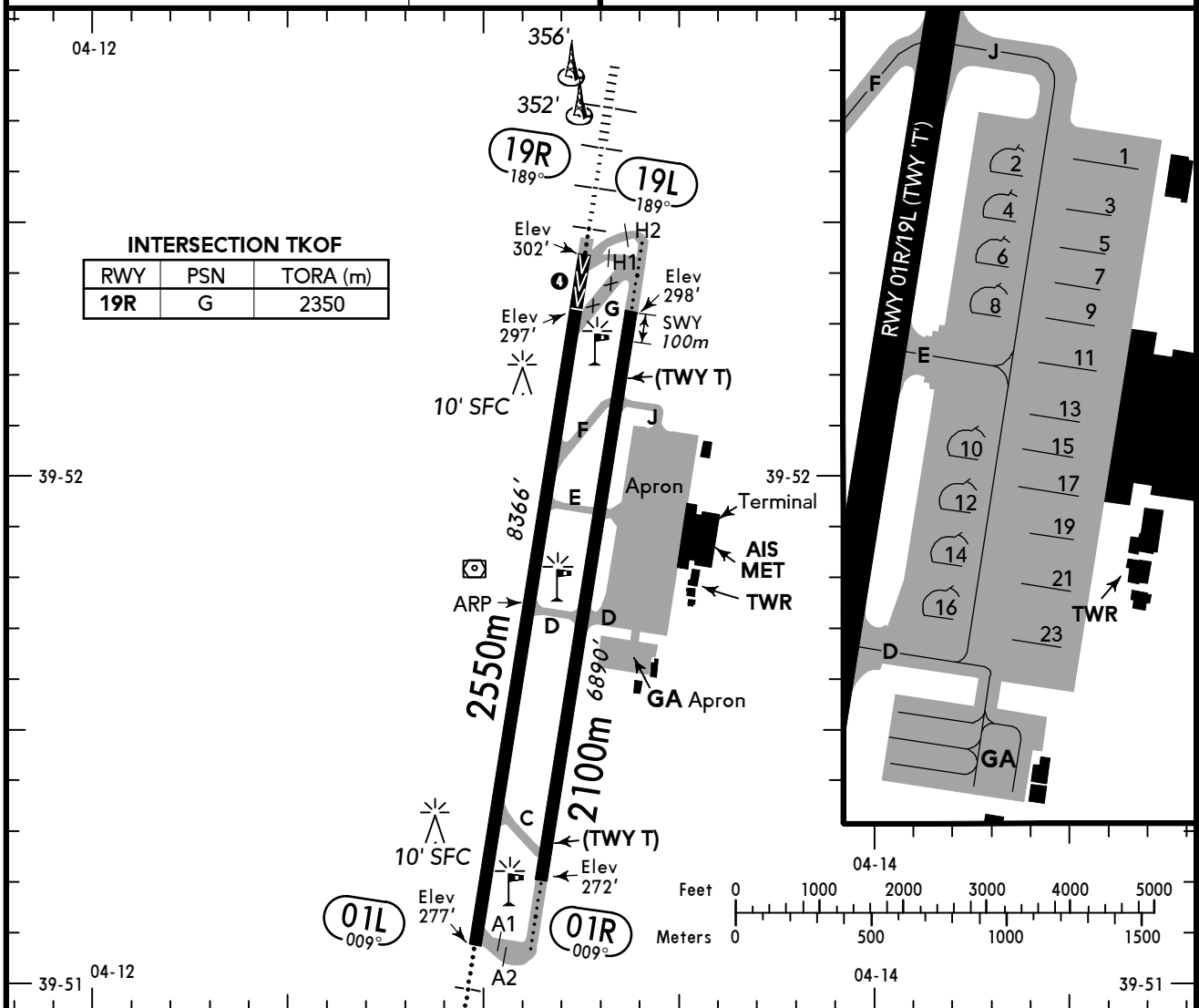
MENORCA

SPAIN, Balearic Islands



GROUND **121.75**

ATIS **129.15**



**TAXI**

ALS - PAPI - THRL - RL - RCLL 01L/19R - TWYL - APRON - WDI - OBSTL.

RWY No	Dimension (m) - Surface	TORA (m)	LDA (m)	Strength	Lights
01L 19R	2550 x 45 Asphalt	④ 2350 2550	2350 2350	PCN 69/F/B/W/T	○
① 01R 19L	② 2100 x 45 Asphalt	2000 2100	2000 2100	PCN 44/F/B/W/T	③ ○

- ① Utilisation announced by NOTAM.
- ② RWY 01R: Including 100m Stopway.
- ③ Turned off when RWY out of service.
- ④ RWY 01L: Last 200m not usable for TKOF and LDG.

**NOTE:**  
 See also LEPA 10-1V/10-1VA.

**CAUTION:**  
 Birds in vicinity of the AD.  
 No ATC service is provided on the manoeuvring area and in the traffic circuit of San Luis.  
 RWY 19L/19R RH traffic circuit.

RWY 01R/19L is used as RWY exclusively in contingency conditions. The start on service of this RWY will be announced by NOTAM. In normal conditions it is used as TWY.  
 Due to short distance between RWYs 01L/19R and 01R/19L it is not allowed to use them simultaneously.